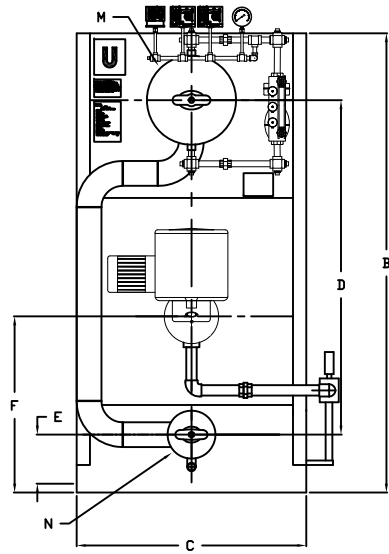
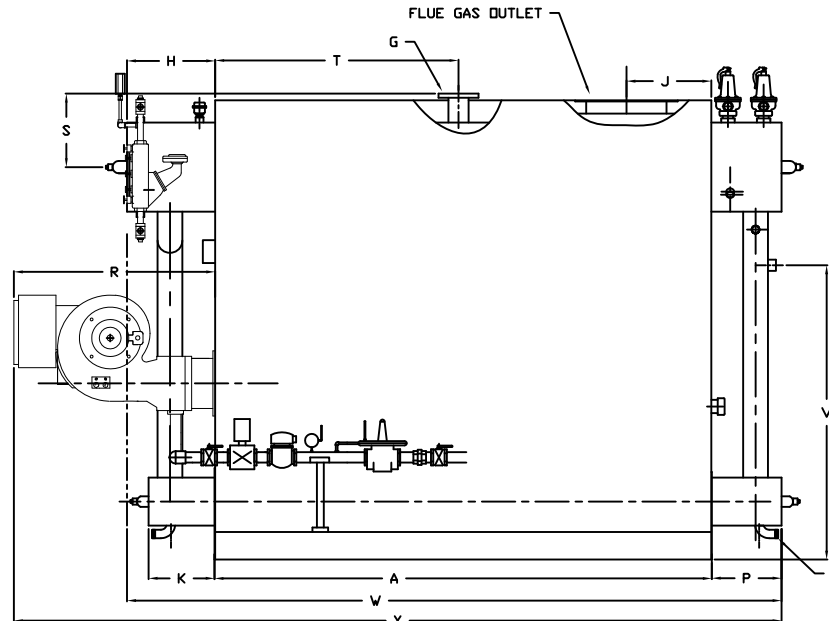


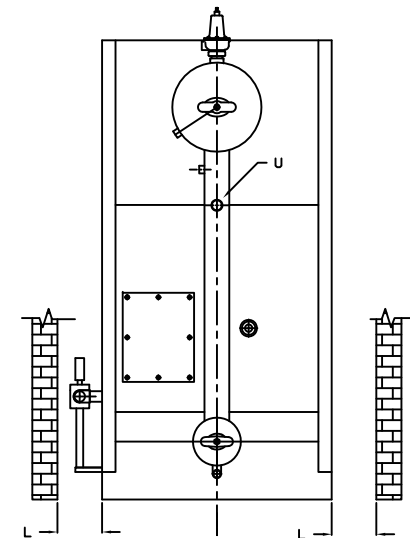
PLAN



FRONT VIEW



SIDE VIEW



REAR VIEW

	BOILER MODEL - ZF800HS	INCHES	METRIC
A	LENGTH OF BASE	111 1/2	2832
A1	LENGTH OF SUPPORT FROM BASE	-	-
B	HEIGHT	102 13/16	2611
C	WIDTH OF BASE	51 1/2	1308
D	CTR. LOWER DRUM TO CTR. UPPER DRUM	75	1905
E	CENTER OF LOWER DRUM TO BOTTOM	12 13/16	325
F	CENTER OF BURNER OPENING TO BOTTOM	38 5/16	973
G	OUTLET NOZZLE, NPS	4	102
H	DRUM CLEARANCE FROM TOP, FRONT	19 5/8	498
J	CENTER OF FLUE GAS OUTLET TO REAR	19	483
K	DRUM CLEARANCE FROM BASE, FRONT	14 5/8	371
L	TUBE REMOVAL CLEARANCE FROM BASE	34	864
M	UPPER DRUM, OD, NPS	20	508
N	LOWER DRUM, OD, NPS	10 3/4	273
O	FLUE GAS OUTLET, I.D.	18	457
P	DRUM CLEARANCE FROM BASE, REAR	15 7/16	392
Q	BLOWDOWN, NPT	1 1/2	38
R	BURNER DIMENSION	46	1168
S	CENTER OF TOP DRUM TO TOP OF OUTLET	16 1/2	419
T	CENTER OF OUTLET TO ENCLOSURE FRONT	54 3/4	1391
U	INLET, 3000 PSI ASA HALF COUPLING	1 1/2	38
V	FEEDWATER INLET FROM BASE	65 13/16	1672
W	OVERALL BOILER LENGTH	146 9/16	3723
X	OVERALL BOILER LENGTH W/ BURNER	173 1/16	4396

NOTE: DIMENSIONS SUBJECT TO CHANGE WITHOUT NOTICE  
CONSULT FACTORY FOR CERTIFIED DIMENSIONS.

**UNILUX BOILER CORP.**  
140 Hanlan Road  
Woodbridge, Ontario L4L 3P6  
Ph: (905) 851-3981 Fax: (905) 851-3987

THIS DRAWING CONSIDERED A CONFIDENTIAL, PROPRIETARY DESIGN. ALL RIGHTS FOR REPRODUCTION, MANUFACTURING OR SALES ARE RESERVED BY UNILUX BOILER CORP.

PROJECT:	
LOCATION:	
Model Sizes:	ZF 700HS
BURNER	
ELECTRIC	
SUPPLY PSI	
Drawn By :	Date :
Checked By :	Date :
Drawing No.:	Scale :
File No. :	REV.: 00