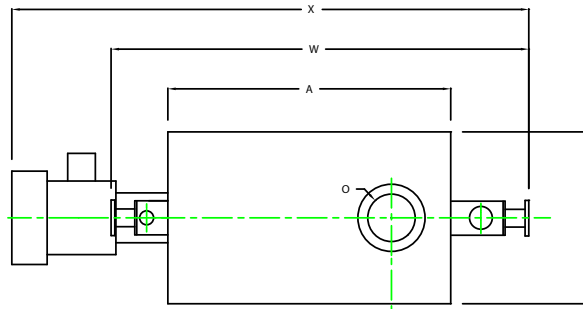
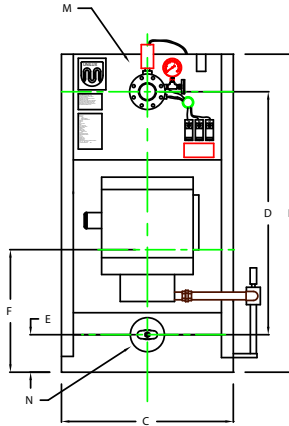


ZF0300W

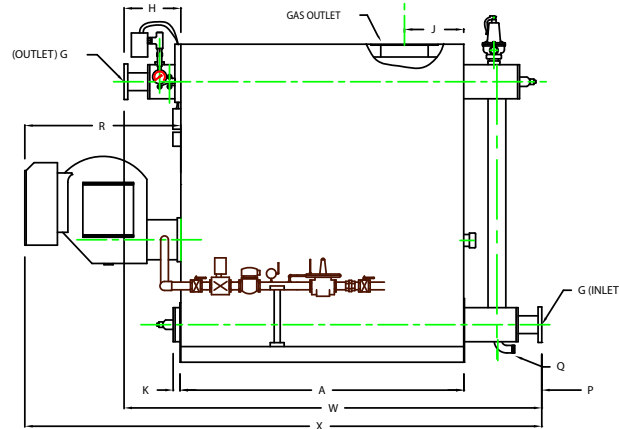


PLAN

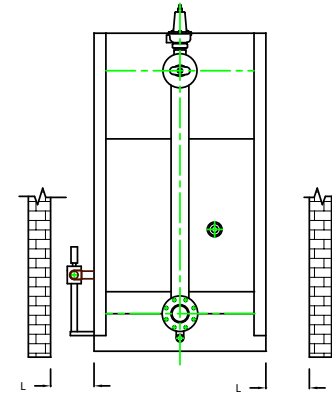
CHIMNEY FLANGE DIMS:
 O.D. = 17"
 I.D. = 12-1/4"
 B.C.D = 14-1/2"
 NO. OF HOLES = 8
 HOLE DIAMETER = 0.53"



FRONT VIEW



SIDE VIEW



REAR VIEW

	BOILER MODEL - ZF300W	INCHES	METRIC
A	LENGTH OF BASE	72	1829
A1	LENGTH OF SUPPORT FROM BASE	-	-
B	HEIGHT	80 1/2	2045
C	WIDTH OF BASE	43 1/2	1105
D	CTR. LOWER DRUM TO CTR. UPPER DRUM	61 1/2	1562
E	CENTER OF LOWER DRUM TO BOTTOM	9 1/2	241
F	CENTER OF BURNER OPENING TO BOTTOM	31	787
G	INLET / OUTLET FLANGE CLASS 150	4	102
H	NOZZLE CLEARANCE FROM TOP FRONT	14 1/4	362
J	CENTER OF FLUE GAS OUTLET TO REAR	16	406
K	DRUM CLEARANCE FROM BASE, FRONT	1 3/4	44
L	TUBE REMOVAL CLEARANCE FROM BASE	26	660
M	UPPER DRUM, OD, NPS	8 5/8	219
N	LOWER DRUM, OD, NPS	8 5/8	219
O	FLUE GAS OUTLET, ID	12	305
P	NOZZLE CLEARANCE FROM BASE, REAR	20 1/8	511
Q	BLOWDOWN, NPT	1 1/2	38
R	BURNER DIMENSION	39 1/2	1003
W	OVERALL BOILER LENGTH	106 3/8	2702
X	OVERALL BOILER LENGTH WITH BURNER	131 5/8	3343

NOTE: "X" DIMENSION MAY VARY BASED ON BURNER

NOTE: DIMENSIONS SUBJECT TO CHANGE WITHOUT NOTICE
 CONSULT FACTORY FOR CERTIFIED DIMENSIONS.

UNILUX ADVANCED MFG., LLC	
30 COMMERCE PARK DRIVE NISKAYUNA, NY 12509 Ph: (518) 344-7490 Fax: (518) 344-7495	
<small>THIS DRAWING PROVIDES A CONFIDENTIAL PROPRIETARY DESIGN. ALL RIGHTS FOR REPRODUCTION, MANUFACTURING OR PATENTS ARE RESERVED BY UNILUX BOILER CORP.</small>	
PROJECT:	-
LOCATION:	-
Model Sizes:	ZF 300W
BURNER:	-
ELECTRIC:	-
SUPPLY PSI:	-
Drawn By:	RIZ RACAZA
Checked By:	DAVID RAMSON
Drawing No.:	QB00000
File No.:	JB00000
Date:	05AUG09
Date:	05AUG09
Scale:	NTS
REV:	0