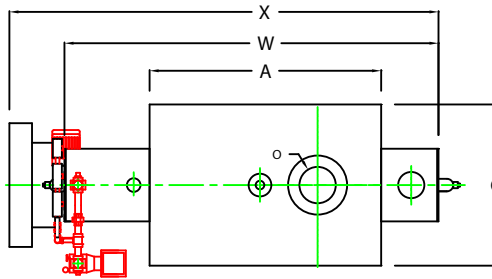
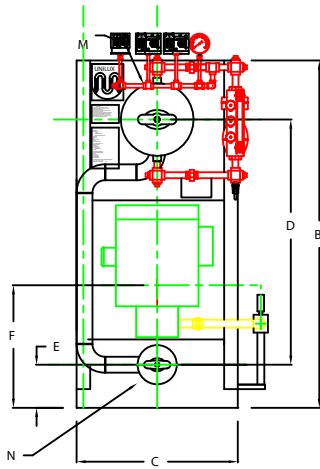


ZF0100HS

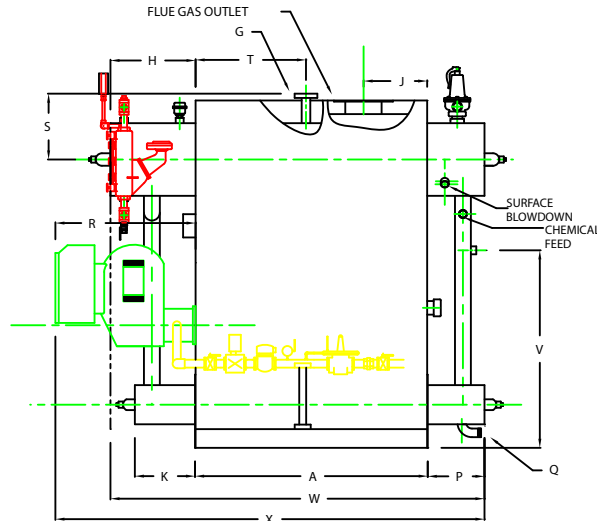


PLAN

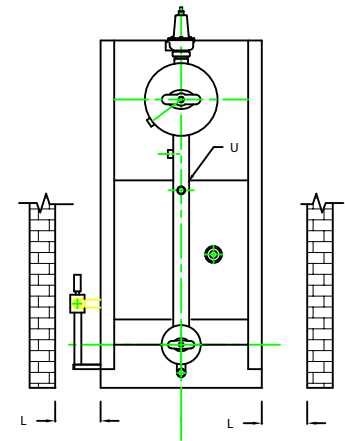
CHIMNEY FLANGE DIMS:
 O.D. = 13"
 I.D. = 8-1/4"
 B.C.D = 10-1/2"
 NO. OF HOLES = 6
 HOLE DIAMETER = 0.53"



FRONT VIEW



SIDE VIEW



REAR VIEW

NOTE: DIMENSIONS SUBJECT TO CHANGE WITHOUT NOTICE
 CONSULT FACTORY FOR CERTIFIED DIMENSIONS.

BOILER MODEL - ZF100HS	INCHES	METRIC
A LENGTH OF BASE	51 1/4	1302
A1 LENGTH OF SUPPORT FROM BASE	-	-
B HEIGHT	26 9/16	1945
C WIDTH OF BASE	35 1/2	902
D CTR. LOWER DRUM TO CTR. UPPER DRUM	54	1372
E CENTER OF LOWER DRUM TO BOTTOM	9 9/16	242
F CENTER OF BURNER OPENING TO BOTTOM	25 7/8	657
G OUTLET FLANGE CLASS 300	1 1/2	38
H DRUM CLEARANCE FROM TOP, FRONT	19 9/16	497
J CENTER OF FLUE GAS OUTLET TO REAR	14	356
K DRUM CLEARANCE FROM BASE, FRONT	13 3/4	349
L TUBE REMOVAL CLEARANCE FROM BASE	18	457
M UPPER DRUM, OD, NPS	16	406
N LOWER DRUM, OD, NPS	8 5/8	219
O FLUE GAS OUTLET, I.D.	8	203
P DRUM CLEARANCE FROM BASE, REAR	13	330
Q BLOWDOWN, NPT	1 1/2	38
R BURNER DIMENSION	31 1/8	791
S CENTER OF TOP DRUM TO TOP OF OUTLET	14 1/2	368
T CENTER OF OUTLET TO ENCLOSURE FRONT	24 7/16	621
U INLET, 3000 PSI ASA HALF COUPLING	1	25
V FEEDWATER INLET FROM BASE	43 9/16	1106
W OVERALL BOILER LENGTH	83 13/16	2129
X OVERALL BOILER LENGTH W/ BURNER	95 3/8	2423

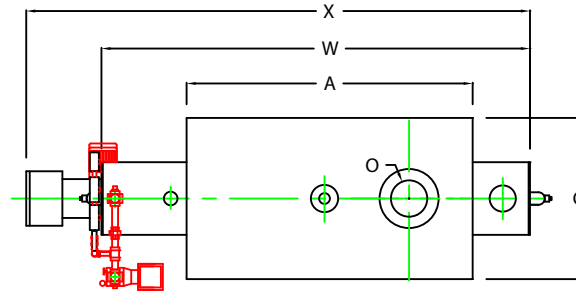
NOTE: "X" DIMENSION MAY VARY BASED ON BURNER

UNILUX ADVANCED MFG., LLC.
 30 COMMERCE PARK DRIVE
 NISKAYUNA, NY 12309
 Ph: (518) 344-7490 Fax: (518) 344-7495

THIS DRAWING EMBODIES A CONFIDENTIAL PROPRIETARY DESIGN. ALL RIGHTS FOR REPRODUCTION, MANUFACTURING OR PATENTS ARE RESERVED BY UNILUX BOILER CORP.

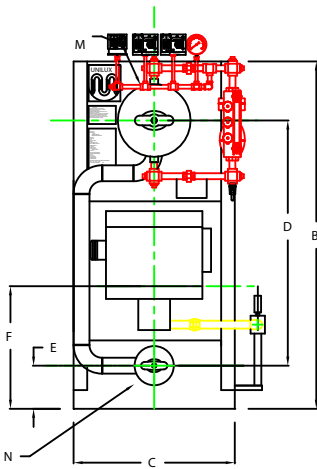
PROJECT:	-
LOCATION:	-
Model Sizes	ZF 100HS
BURNER	-
ELECTRIC	-
SUPPLY PSI	-
Drawn By :	RIZ RACAIZA Date: 05AUG09
Checked By :	DAVID RAMSON Date: 05AUG09
Drawing No.	QB00000 Scale NTS
File No. :	JB00000 REV: 0

ZF0150HS

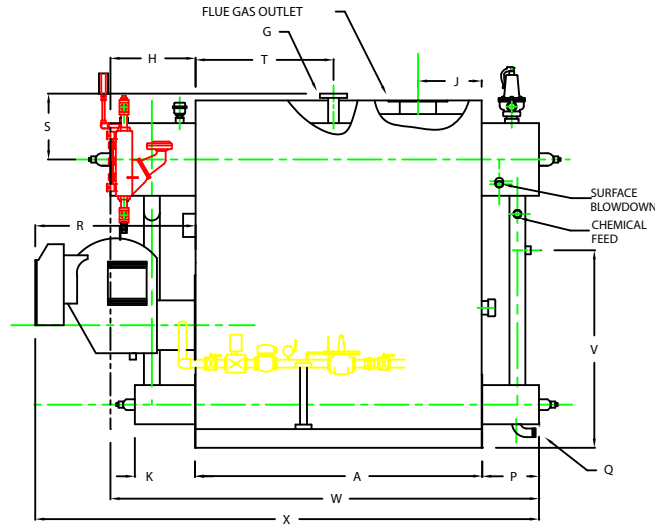


PLAN

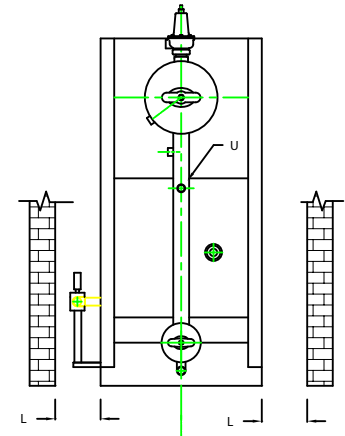
CHIMNEY FLANGE DIMS:
 O.D. = 13"
 I.D. = 8-1/4"
 B.C.D = 10-1/2"
 NO. OF HOLES = 6
 HOLE DIAMETER = 0.53"



FRONT VIEW



SIDE VIEW




REAR VIEW

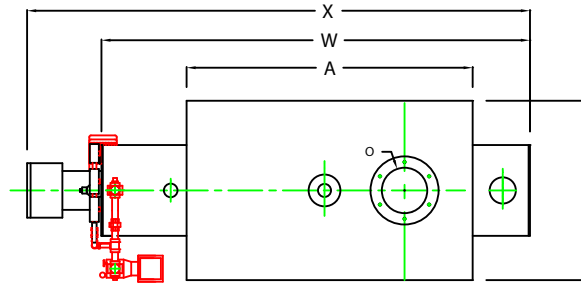
NOTE: DIMENSIONS SUBJECT TO CHANGE WITHOUT NOTICE
 CONSULT FACTORY FOR CERTIFIED DIMENSIONS.

	INCHES	METRIC
A BOILER MODEL - ZF150HS		
A LENGTH OF BASE	63 1/4	1607
A1 LENGTH OF SUPPORT FROM BASE	-	-
B HEIGHT	76 9/16	1945
C WIDTH OF BASE	35 1/2	902
D CTR. LOWER DRUM TO CTR. UPPER DRUM	54	1372
E CENTER OF LOWER DRUM TO BOTTOM	9 9/16	243
F CENTER OF BURNER OPENING TO BOTTOM	25 7/8	657
G OUTLET FLANGE CLASS 300	2	51
H DRUM CLEARANCE FROM TOP, FRONT	19 5/8	498
J CENTER OF FLUE GAS OUTLET TO REAR	14	356
K DRUM CLEARANCE FROM BASE, FRONT	13 3/4	349
L TUBE REMOVAL CLEARANCE FROM BASE	18	457
M UPPER DRUM, OD, NPS	16	406
N LOWER DRUM, OD, NPS	8 5/8	219
O FLUE GAS OUTLET, I.D.	8	203
P DRUM CLEARANCE FROM BASE, REAR	13	330
Q BLOWDOWN, NPT	1 1/2	38
R BURNER DIMENSION	35 1/8	892
S CENTER OF TOP DRUM TO TOP OF OUTLET	14 1/2	368
T CENTER OF OUTLET TO ENCLOSURE FRONT	30 1/2	775
U INLET, 3000 PSI ASA HALF COUPLING	1	25
V FEEDWATER INLET FROM BASE	43 9/16	1106
W OVERALL BOILER LENGTH	95 7/8	2435
X OVERALL BOILER LENGTH W/ BURNER	111 3/8	2829

NOTE: "X" DIMENSION MAY VARY BASED ON BURNER

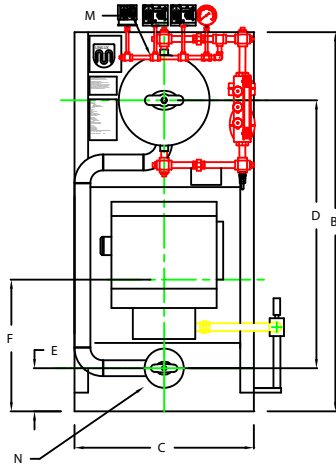
 UNILUX ADVANCED MFG., LLC. 30 COMMERCE PARK DRIVE NISKAYUNA, NY 12309 Ph: (518) 344-7490 Fax: (518) 344-7495	
<small>THIS DRAWING EMBODIES A CONFIDENTIAL PROPRIETARY DESIGN. ALL RIGHTS FOR REPRODUCTION, MANUFACTURING OR PATENTS ARE RESERVED BY UNILUX BOLLER CORP.</small>	
PROJECT:	-
LOCATION:	-
Model Sizes	ZF 150HS
BURNER	-
ELECTRIC	-
SUPPLY PSI	-
Drawn By:	RIZ RACAIZA Date: 05AUG09
Checked By:	DAVID RAMSON Date: 05AUG09
Drawing No.	QB00000 Scale: NTS
File No.:	JB00000 REV: 0

ZF0200HS

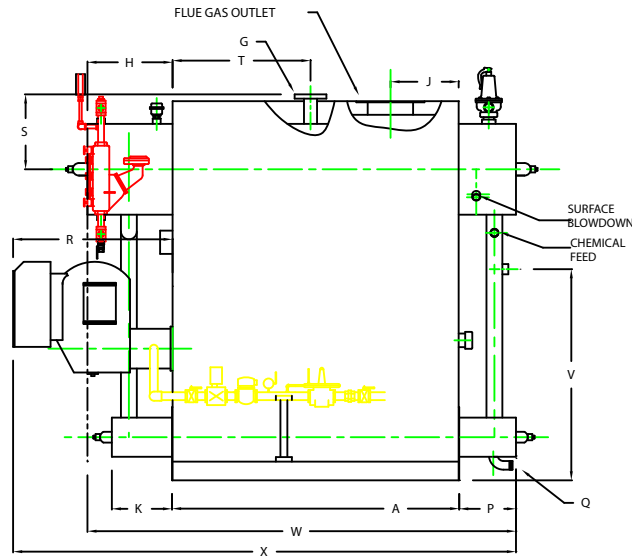


PLAN

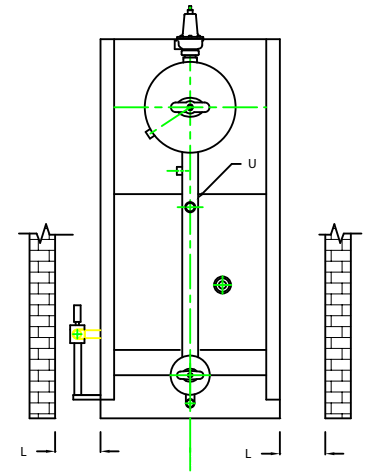
CHIMNEY FLANGE DIMS:
 O.D. = 15"
 I.D. = 10-1/4"
 B.C.D = 12-1/2"
 NO. OF HOLES = 6
 HOLE DIAMETER = 0.53"



FRONT VIEW



SIDE VIEW



REAR VIEW

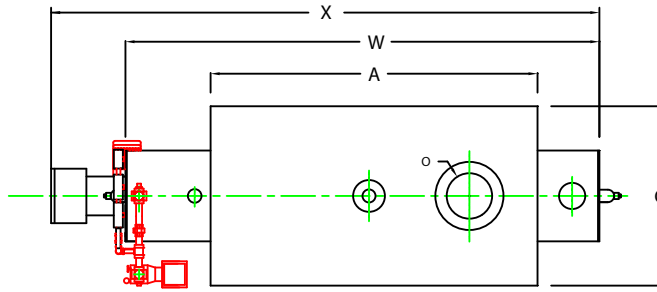
NOTE: DIMENSIONS SUBJECT TO CHANGE WITHOUT NOTICE
 CONSULT FACTORY FOR CERTIFIED DIMENSIONS.

	BOILER MODEL - ZF200HS	INCHES	METRIC
A	LENGTH OF BASE	63 1/4	1607
A1	LENGTH OF SUPPORT FROM BASE	-	-
B	HEIGHT	83 9/16	2122
C	WIDTH OF BASE	39 1/2	1003
D	CTR. LOWER DRUM TO CTR. UPPER DRUM	59	1499
E	CENTER OF LOWER DRUM TO BOTTOM	9 9/16	243
F	CENTER OF BURNER OPENING TO BOTTOM	27 7/8	708
G	OUTLET FLANGE CLASS 300	2 1/2	64
H	DRUM CLEARANCE FROM TOP, FRONT	19 7/8	505
J	CENTER OF FLUE GAS OUTLET TO REAR	15	381
K	DRUM CLEARANCE FROM BASE, FRONT	13 3/4	349
L	TUBE REMOVAL CLEARANCE FROM BASE	22	559
M	UPPER DRUM, OD, NPS	20	508
N	LOWER DRUM, OD, NPS	8 5/8	219
O	FLUE GAS OUTLET, I.D.	10	254
P	DRUM CLEARANCE FROM BASE, REAR	13	330
Q	BLOWDOWN, NPT	1 1/2	38
R	BURNER DIMENSION	35 1/8	892
S	CENTER OF TOP DRUM TO TOP OF OUTLET	16 1/2	419
T	CENTER OF OUTLET TO ENCLOSURE FRONT	30 1/2	775
U	INLET, 3000 PSI ASA HALF COUPLING	1	25
V	FEEDWATER INLET FROM BASE	46 9/16	1183
W	OVERALL BOILER LENGTH	96 1/8	2442
X	OVERALL BOILER LENGTH W/ BURNER	111 3/8	2829

NOTE: "X" DIMENSION MAY VARY BASED ON BURNER

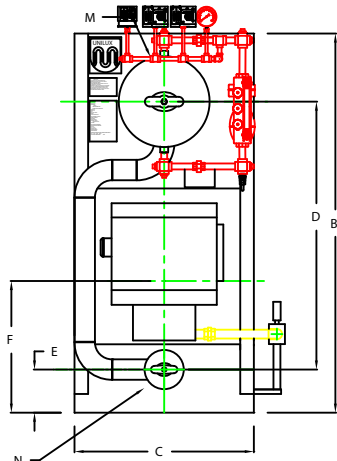
UNILUX ADVANCED MFG., LLC.	
30 COMMERCE PARK DRIVE NISKAYUNA, NY 12309 Ph: (518) 344-7490 Fax: (518) 344-7495	
<small>THIS DRAWING PROVIDES A CONFIDENTIAL PROPRIETARY DESIGN. ALL RIGHTS FOR REPRODUCTION, MANUFACTURING OR PATENTS ARE RESERVED BY UNILUX BOILER CORP.</small>	
PROJECT:	-
LOCATION:	-
Model Sizes	ZF 200HS
BURNER	-
ELECTRIC	-
SUPPLY PSI	-
Drawn By:	RIZ RACAZA
Checked By:	DAVID RAMSON
Drawing No.	QB00000
File No.:	3B00000
Date:	05AUG09
Date:	05AUG09
Scale:	NTS
REV:	0

ZF0250HS

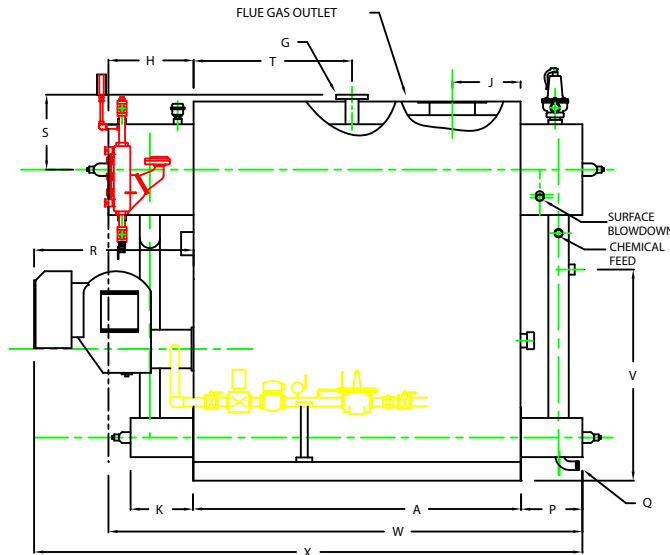


PLAN

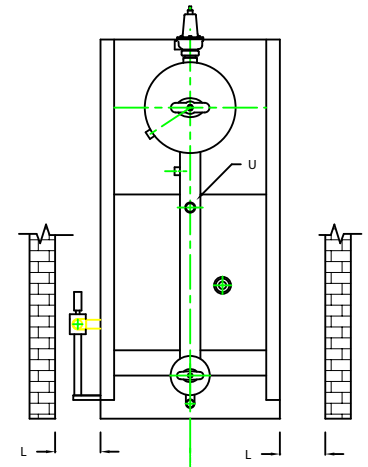
CHIMNEY FLANGE DIMS:
 O.D. = 15"
 I.D. = 10-1/4"
 B.C.D = 12-1/2"
 NO. OF HOLES = 6
 HOLE DIAMETER = 0.53"



FRONT VIEW



SIDE VIEW



REAR VIEW

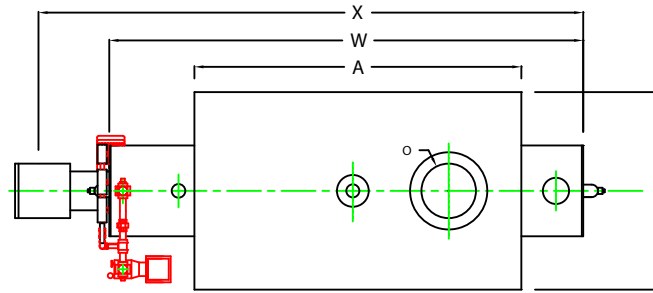
NOTE: DIMENSIONS SUBJECT TO CHANGE WITHOUT NOTICE
 CONSULT FACTORY FOR CERTIFIED DIMENSIONS.

	BOILER MODEL - ZF250HS	INCHES	METRIC
A	LENGTH OF BASE	72 1/4	1835
A1	LENGTH OF SUPPORT FROM BASE	-	-
B	HEIGHT	83 9/16	2122
C	WIDTH OF BASE	39 1/2	1003
D	CTR. LOWER DRUM TO CTR. UPPER DRUM	59	1499
E	CENTER OF LOWER DRUM TO BOTTOM	9 9/16	243
F	CENTER OF BURNER OPENING TO BOTTOM	27 7/8	708
G	OUTLET FLANGE CLASS 300	2 1/2	64
H	DRUM CLEARANCE FROM TOP, FRONT	19 1/2	495
J	CENTER OF FLUE GAS OUTLET TO REAR	15	381
K	DRUM CLEARANCE FROM BASE, FRONT	14 1/4	362
L	TUBE REMOVAL CLEARANCE FROM BASE	22	559
M	UPPER DRUM, OD, NPS	20	508
N	LOWER DRUM, OD, NPS	8 5/8	219
O	FLUE GAS OUTLET, I.D.	10	254
P	DRUM CLEARANCE FROM BASE, REAR	14	356
Q	BLOWDOWN, NPT	1 1/2	38
R	BURNER DIMENSION	35 1/8	892
S	CENTER OF TOP DRUM TO TOP OF OUTLET	16 1/2	419
T	CENTER OF OUTLET TO ENCLOSURE FRONT	35 1/16	891
U	INLET, 3000 PSI ASA HALF COUPLING	1 1/4	32
V	FEEDWATER INLET FROM BASE	46 9/16	1183
W	OVERALL BOILER LENGTH	105 3/4	2686
X	OVERALL BOILER LENGTH W/ BURNER	121 3/8	3083

NOTE: "X" DIMENSION MAY VARY BASED ON BURNER

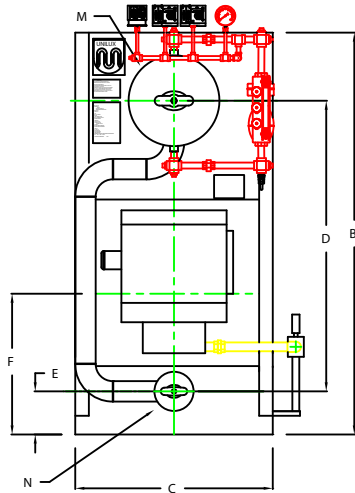
UNILUX ADVANCED MFG., LLC.	
30 COMMERCE PARK DRIVE NISKAYUNA, NY 12309 Ph: (518) 344-7490 Fax: (518) 344-7495	
<small>THIS DRAWING/EMBOSS IS A CONFIDENTIAL PROPRIETARY DESIGN. ALL RIGHTS FOR REPRODUCTION, MANUFACTURING OR PATENTS ARE RESERVED BY UNILUX BOILER CORP.</small>	
PROJECT:	-
LOCATION:	-
Model Sizes	ZF 250HS
BURNER	-
ELECTRIC	-
SUPPLY PSI	-
Drawn By :	RIZA RACAZA Date: 05AUG09
Checked By :	DAVID RAMSON Date: 05AUG09
Drawing No.	QB00000 Scale: NTS
File No.:	JB00000 REV: 0

ZF0300HS

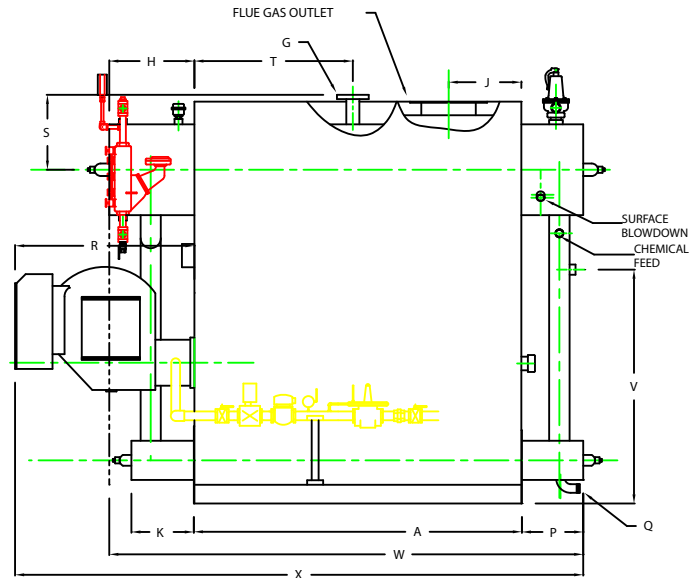


PLAN

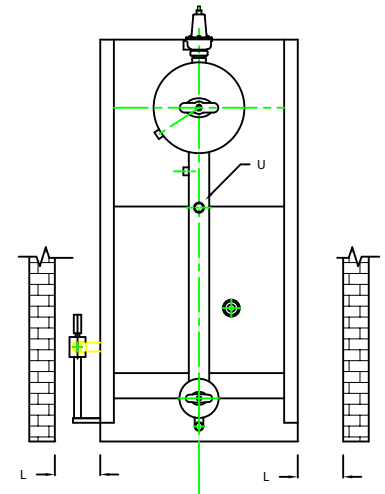
CHIMNEY FLANGE DIMS:
 O.D. = 17"
 I.D. = 12-1/4"
 B.C.D = 14-1/2"
 NO. OF HOLES = 8
 HOLE DIAMETER = 0.53"



FRONT VIEW



SIDE VIEW



REAR VIEW

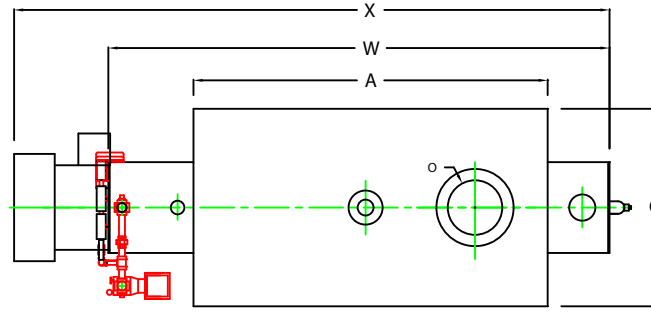
NOTE: DIMENSIONS SUBJECT TO CHANGE WITHOUT NOTICE
 CONSULT FACTORY FOR CERTIFIED DIMENSIONS.

BOILER MODEL - ZF300HS	INCHES	METRIC
A LENGTH OF BASE	72 1/4	1830
A1 LENGTH OF SUPPORT FROM BASE	-	-
B HEIGHT	88 9/16	2249
C WIDTH OF BASE	43 1/2	1105
D CTR. LOWER DRUM TO CTR. UPPER DRUM	64	1625
E CENTER OF LOWER DRUM TO BOTTOM	9 9/16	243
F CENTER OF BURNER OPENING TO BOTTOM	29 3/8	746
G OUTLET FLANGE CLASS 300	3	76
H DRUM CLEARANCE FROM TOP, FRONT	19 1/2	495
J CENTER OF FLUE GAS OUTLET TO REAR	16	406
K DRUM CLEARANCE FROM BASE, FRONT	14 1/4	362
L TUBE REMOVAL CLEARANCE FROM BASE	26	660
M UPPER DRUM, OD, NPS	20	508
N LOWER DRUM, OD, NPS	8 5/8	219
O FLUE GAS OUTLET, I.D.	12	305
P DRUM CLEARANCE FROM BASE, REAR	14	356
Q BLOWDOWN, NPT	1 1/2	38
R BURNER DIMENSION	39 1/2	1003
S CENTER OF TOP DRUM TO TOP OF OUTLET	16 1/2	419
T CENTER OF OUTLET TO ENCLOSURE FRONT	35 1/16	891
U INLET, 3000 PSI ASA HALF COUPLING	1 1/4	32
V FEEDWATER INLET FROM BASE	51 9/16	1310
W OVERALL BOILER LENGTH	105 3/4	2686
X OVERALL BOILER LENGTH W/ BURNER	125 3/4	3194

NOTE: "X" DIMENSION MAY VARY BASED ON BURNER

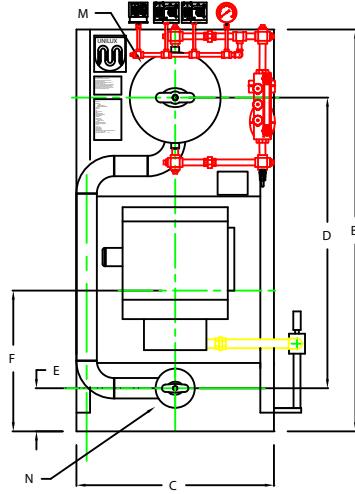
UNILUX ADVANCED MFG., LLC.	
30 COMMERCE PARK DRIVE NISKAYUNA, NY 12309 Ph: (518) 344-7490 Fax: (518) 344-7495	
THIS DRAWING SHOWS A CONFIDENTIAL, PROPRIETARY DESIGN. ALL RIGHTS FOR REPRODUCTION, MANUFACTURING OR PATENTS ARE RESERVED BY UNILUX BOILER CORP.	
PROJECT:	
LOCATION:	
Model Sizes:	ZF 300HS
BURNER:	-
ELECTRIC:	-
SUPPLY PSI:	-
Drawn By:	RIZ RACAZA Date: 05AUG09
Checked By:	DAVID RAMSON Date: 05AUG09
Drawing No.:	QB00000 Scale: NTS
File No.:	JB00000 REV: 0

ZF0350HS

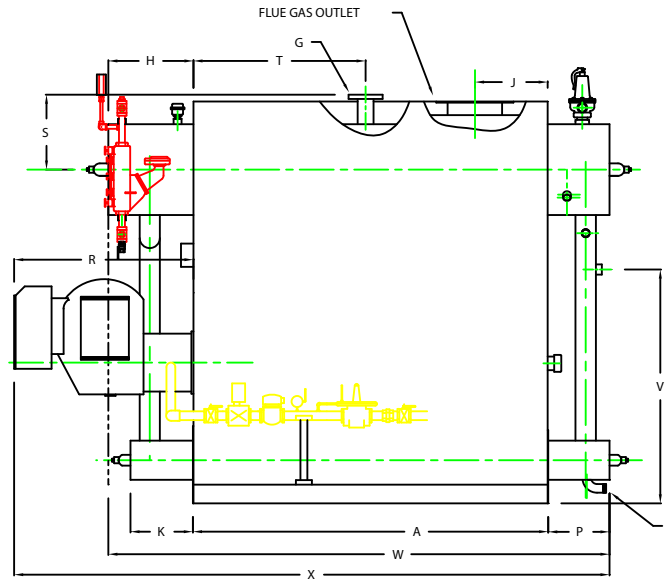


PLAN

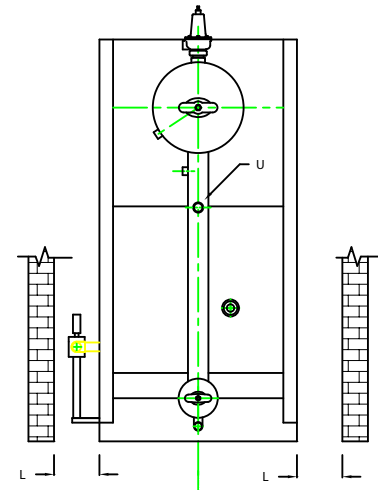
CHIMNEY FLANGE DIMS:
 O.D. = 17"
 I.D. = 12-1/4"
 B.C.D = 14-1/2"
 NO. OF HOLES = 8
 HOLE DIAMETER = 0.53"



FRONT VIEW



SIDE VIEW



REAR VIEW

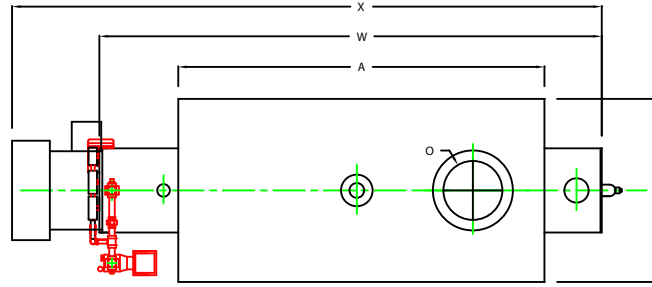
BOILER MODEL - ZF350HS		INCHES	METRIC
A	LENGTH OF BASE	78 1/4	1988
A1	LENGTH OF SUPPORT FROM BASE	-	-
B	HEIGHT	88 9/16	2249
C	WIDTH OF BASE	43 1/2	1105
D	CTR. LOWER DRUM TO CTR. UPPER DRUM	64	1625
E	CENTER OF LOWER DRUM TO BOTTOM	9 9/16	243
F	CENTER OF BURNER OPENING TO BOTTOM	29 3/8	746
G	OUTLET FLANGE CLASS 300	3	76
H	DRUM CLEARANCE FROM TOP, FRONT	19 7/8	505
J	CENTER OF FLUE GAS OUTLET TO REAR	16	406
K	DRUM CLEARANCE FROM BASE, FRONT	14 1/4	362
L	TUBE REMOVAL CLEARANCE FROM BASE	26	660
M	UPPER DRUM, OD, NPS	20	508
N	LOWER DRUM, OD, NPS	8 5/8	219
O	FLUE GAS OUTLET, I.D.	12	305
P	DRUM CLEARANCE FROM BASE, REAR	14	356
Q	BLOWDOWN, NPT	1 1/2	38
R	BURNER DIMENSION	39 1/2	1003
S	CENTER OF TOP DRUM TO TOP OF OUTLET	16 1/2	419
T	CENTER OF OUTLET TO ENCLOSURE FRONT	38 1/16	967
U	INLET, 3000 PSI ASA HALF COUPLING	1 1/4	32
V	FEEDWATER INLET FROM BASE	51 9/16	1310
W	OVERALL BOILER LENGTH	112 1/8	2848
X	OVERALL BOILER LENGTH W/ BURNER	131 3/4	3346

NOTE: DIMENSIONS SUBJECT TO CHANGE WITHOUT NOTICE
 CONSULT FACTORY FOR CERTIFIED DIMENSIONS.

NOTE: "X" DIMENSION MAY VARY BASED ON BURNER

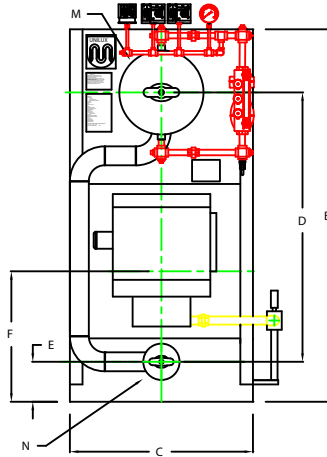
UNILUX ADVANCED MFG., LLC		
30 COMMERCE PARK DRIVE NISKAYUNA, NY 12309 Ph: (518) 344-7490 Fax: (518) 344-7495		
<small>THIS DRAWING ENDS/IS A CONFIDENTIAL PROPRIETARY DESIGN. ALL RIGHTS FOR REPRODUCTION, MANUFACTURING OR PATENTS ARE RESERVED BY UNILUX BOILER CORP.</small>		
PROJECT:	-	
LOCATION:	-	
Model Sizes	ZF 350HS	
BURNER	-	
ELECTRIC	-	
SUPPLY PSI	-	
Drawn By:	RIZ RACAZA	Date: 05AUG09
Checked By:	DAVID RAMSON	Date: 05AUG09
Drawing No.	QB00000	Scale: NTS
File No.:	JB00000	REV: 0

ZF0400HS

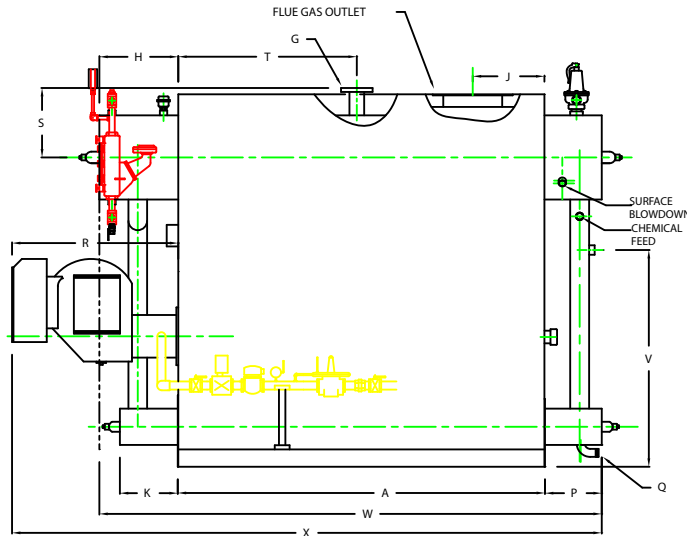


PLAN

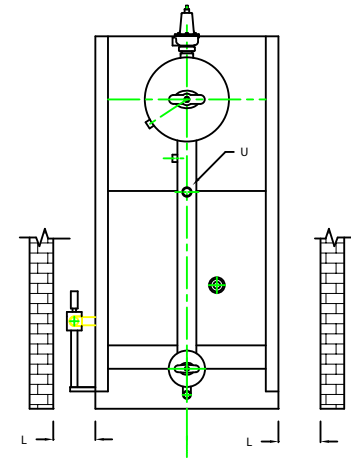
CHIMNEY FLANGE DIMS:
 O.D. = 19"
 I.D. = 14-1/4"
 B.C.D = 16-1/2"
 NO. OF HOLES = 8
 HOLE DIAMETER = 0.53"



FRONT VIEW



SIDE VIEW




REAR VIEW

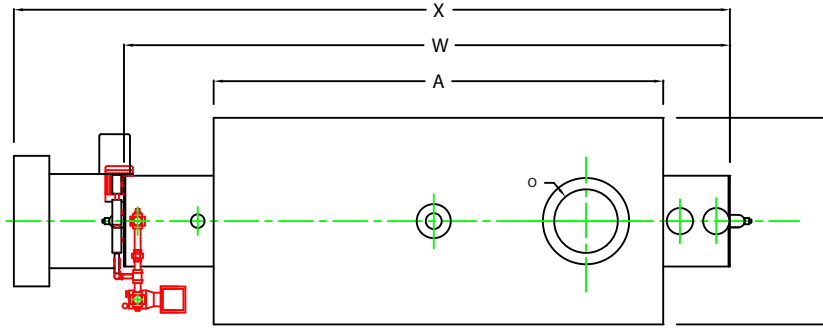
NOTE: DIMENSIONS SUBJECT TO CHANGE WITHOUT NOTICE
 CONSULT FACTORY FOR CERTIFIED DIMENSIONS.

	BOILER MODEL - ZF400HS	INCHES	METRIC
A	LENGTH OF BASE	87 1/4	2216
A1	LENGTH OF SUPPORT FROM BASE	-	-
B	HEIGHT	88 9/16	2249
C	WIDTH OF BASE	43 1/2	1105
D	CTR. LOWER DRUM TO CTR. UPPER DRUM	64	1625
E	CENTER OF LOWER DRUM TO BOTTOM	9 9/16	243
F	CENTER OF BURNER OPENING TO BOTTOM	29 3/8	746
G	OUTLET FLANGE CLASS 300	3	76
H	DRUM CLEARANCE FROM TOP FRONT	20 3/8	518
J	CENTER OF FLUE GAS OUTLET TO REAR	17	432
K	DRUM CLEARANCE FROM BASE, FRONT	14 1/4	362
L	TUBE REMOVAL CLEARANCE FROM BASE	26	660
M	UPPER DRUM, OD, NPS	20	508
N	LOWER DRUM, OD, NPS	8 5/8	219
O	FLUE GAS OUTLET, I.D.	14	356
P	DRUM CLEARANCE FROM BASE, REAR	14	356
Q	BLOWDOWN, NPT	1 1/2	38
R	BURNER DIMENSION	39 1/2	1003
S	CENTER OF TOP DRUM TO TOP OF OUTLET	16 1/2	419
T	CENTER OF OUTLET TO ENCLOSURE FRONT	42 9/16	1081
U	INLET, 3000 PSI ASA HALF COUPLING	1 1/4	32
V	FEEDWATER INLET FROM BASE	51 9/16	1310
W	OVERALL BOILER LENGTH	121 5/8	3089
X	OVERALL BOILER LENGTH W/ BURNER	140 3/4	3575

NOTE: "X" DIMENSION MAY VARY BASED ON BURNER

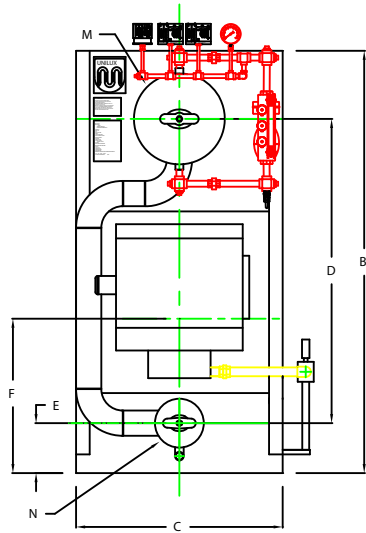
 UNILUX ADVANCED MFG., LLC. 30 COMMERCE PARK DRIVE NISKAYUNA, NY 12309 Ph: (518) 344-7490 Fax: (518) 344-7495	
PROJECT:	-
LOCATION:	-
Model Sizes	ZF 400HS
BURNER	-
ELECTRIC	-
SUPPLY PSI	-
Drawn By:	RIZ RACAZA
Checked By:	DAVID RAMSON
Drawing No.:	QB00000
File No.:	JB00000
Date:	05AUG09
Date:	05AUG09
Scale:	NTS
REV:	0

ZF0500HS

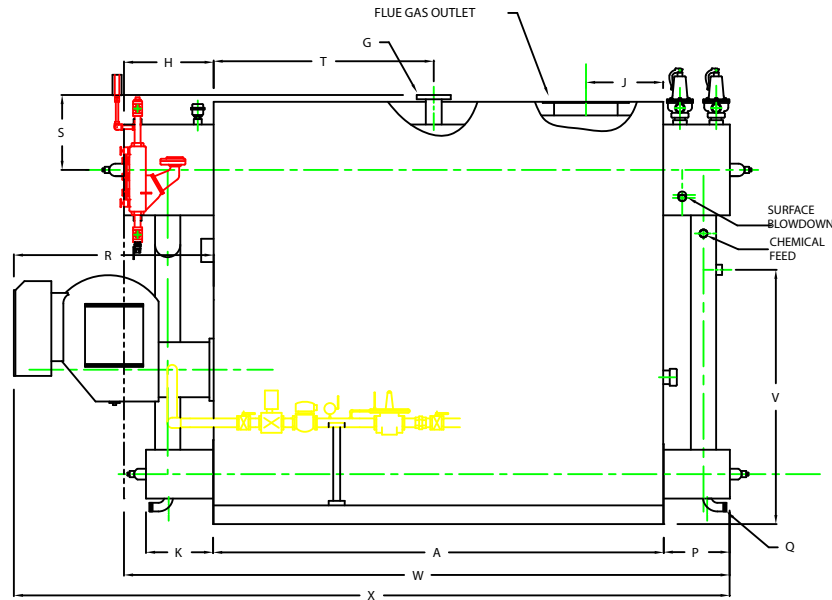


PLAN

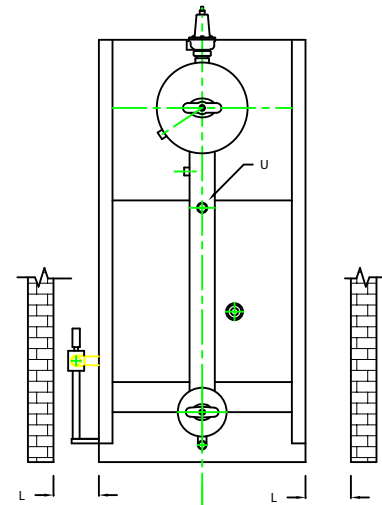
CHIMNEY FLANGE DIMS:
 O.D. = 19"
 I.D. = 14-1/4"
 B.C.D = 16-1/2"
 NO. OF HOLES = 8
 HOLE DIAMETER = 0.53"



FRONT VIEW



SIDE VIEW



REAR VIEW

NOTE: DIMENSIONS SUBJECT TO CHANGE WITHOUT NOTICE
 CONSULT FACTORY FOR CERTIFIED DIMENSIONS.

	INCHES	METRIC
A	99 1/4	2521
A1	-	-
B	92 13/16	2357
C	45 1/2	1156
D	67	1702
E	10 13/16	275
F	33	838
G	3	76
H	20 7/8	530
J	17	432
K	15 1/2	394
L	28	711
M	20	508
N	10 3/4	273
O	14	356
P	15 5/16	389
Q	1 1/2	38
R	44	1118
S	16 1/2	419
T	45 5/8	1159
U	1 1/4	32
V	55 9/16	1411
W	135 7/16	3440
X	158 9/16	4027

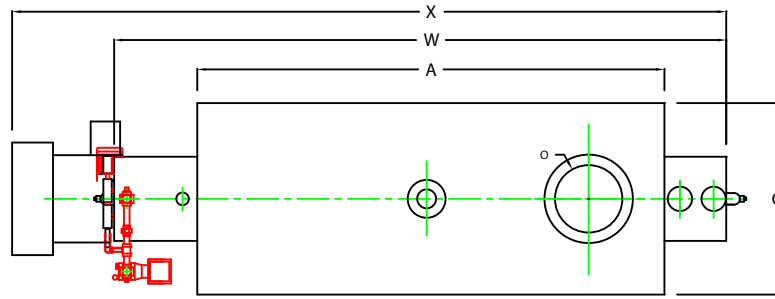
NOTE: "X" DIMENSION MAY VARY BASED ON BURNER

UNILUX UNILUX ADVANCED MFG., LLC.
 30 COMMERCE PARK DRIVE
 NISKAYUNA, NY 12309
 Ph: (518) 344-7490 Fax: (518) 344-7495

THIS DRAWING REMAINS A CONFIDENTIAL, PROPRIETARY DESIGN. ALL RIGHTS FOR REPRODUCTION, MANUFACTURING OR PATENTS ARE RESERVED BY UNILUX BOILER CORP.

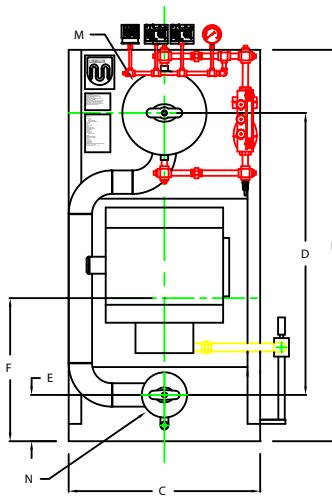
PROJECT:	-
LOCATION:	-
Model Sizes	ZF 500HS
BURNER:	-
ELECTRIC:	-
SUPPLY PSI:	-
Drawn By:	RIZ RACAZA
Checked By:	DAVID RAMSON
Drawing No.	QB00000
File No.:	JB00000
Date:	05AUG09
Date:	05AUG09
Scale:	NTS
REV:	0

ZF0600HS

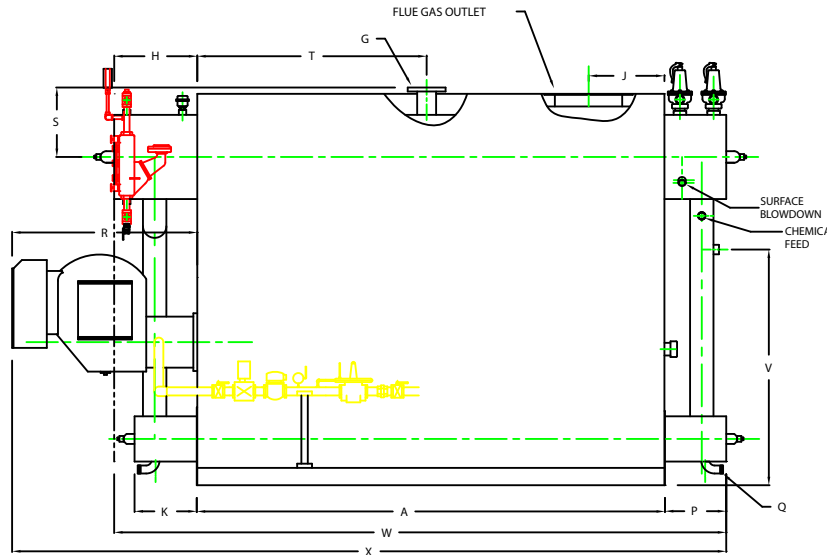


PLAN

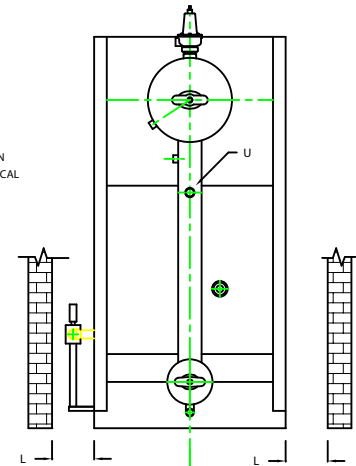
CHIMNEY FLANGE DIMS:
 O.D. = 21"
 I.D. = 16-1/4"
 B.C.D = 18-1/2"
 NO. OF HOLES = 8
 HOLE DIAMETER = 0.53"



FRONT VIEW



SIDE VIEW



REAR VIEW

NOTE: DIMENSIONS SUBJECT TO CHANGE WITHOUT NOTICE
 CONSULT FACTORY FOR CERTIFIED DIMENSIONS.

	INCHES	METRIC
BOILER MODEL - ZF600HS		
A LENGTH OF BASE	111 1/4	2826
A1 LENGTH OF SUPPORT FROM BASE	-	-
B HEIGHT	92 13/16	2357
C WIDTH OF BASE	45 1/2	1156
D CTR. LOWER DRUM TO CTR. UPPER DRUM	67	1702
E CENTER OF LOWER DRUM TO BOTTOM	10 13/16	275
F CENTER OF BURNER OPENING TO BOTTOM	33	838
G OUTLET FLANGE CLASS 300	4	102
H DRUM CLEARANCE FROM TOP, FRONT	20 7/8	530
J CENTER OF FLUE GAS OUTLET TO REAR	18	457
K DRUM CLEARANCE FROM BASE, FRONT	15 1/2	394
L TUBE REMOVAL CLEARANCE FROM BASE	28	711
M UPPER DRUM, OD, NPS	20	508
N LOWER DRUM, OD, NPS	10 3/4	273
O FLUE GAS OUTLET, I.D.	16	406
P DRUM CLEARANCE FROM BASE, REAR	15 5/16	389
Q BLOWDOWN, NPT	1 1/2	38
R BURNER DIMENSION	44	1118
S CENTER OF TOP DRUM TO TOP OF OUTLET	16 1/2	419
T CENTER OF OUTLET TO ENCLOSURE FRONT	54 5/8	1387
U INLET, 3000 PSI ASA HALF COUPLING	1 1/4	32
V FEEDWATER INLET FROM BASE	55 9/16	1411
W OVERALL BOILER LENGTH	147 7/16	3745
X OVERALL BOILER LENGTH W/ BURNER	170 9/16	4332

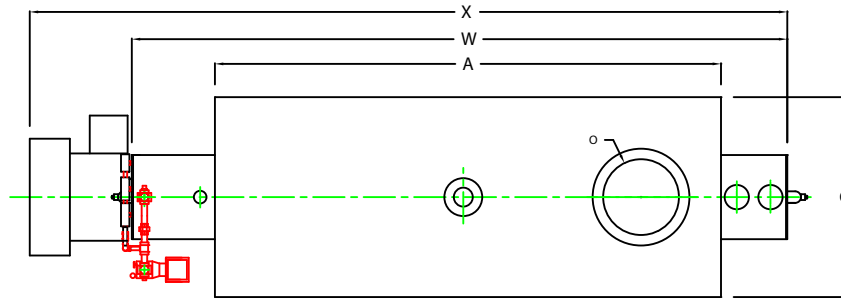
NOTE: "X" DIMENSION MAY VARY BASED ON BURNER

UNILUX ADVANCED MFG., LLC.
 30 COMMERCE PARK DRIVE
 NISKAYUNA, NY 12309
 Ph: (518) 344-7490 Fax: (518) 344-7495

THIS DRAWING PRESENTS A CONFIDENTIAL, PROPRIETARY DESIGN. ALL RIGHTS FOR REPRODUCTION, MANUFACTURING OR PATENTS ARE RESERVED BY UNILUX ADVANCED MFG.

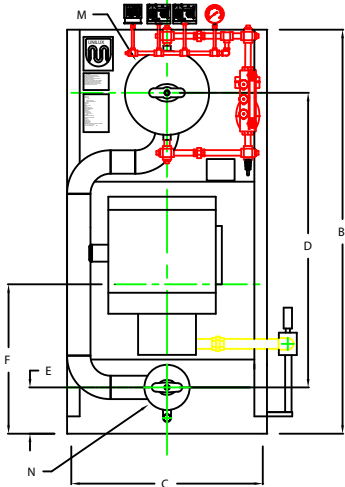
PROJECT:	-
LOCATION:	-
Model Sizes	ZF 600HS
BURNER	-
ELECTRIC	-
SUPPLY PSI	-
Drawn By:	RIZ RACAIZA Date: 05AUG09
Checked By:	DAVID RAMSON Date: 05AUG09
Drawing No.	QB00000 Scale: NTS
File No.:	JB00000 REV: 0

ZF0700HS

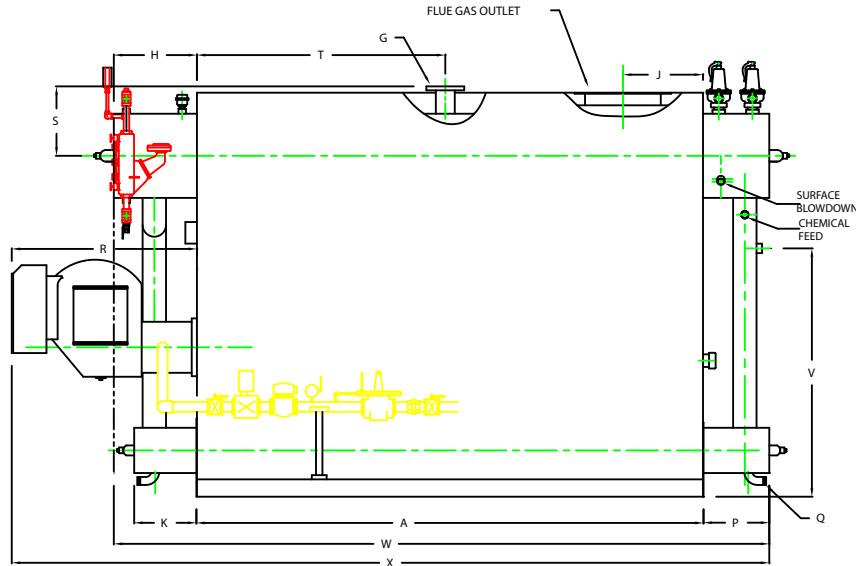


PLAN

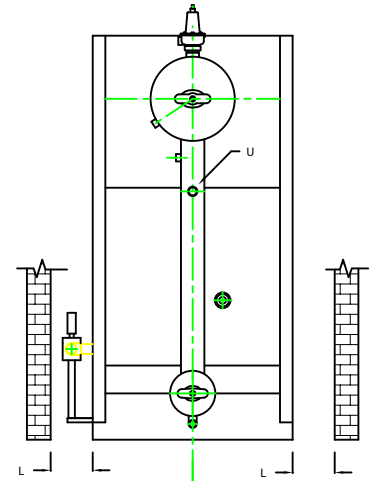
CHIMNEY FLANGE DIMS:
 O.D. = 23"
 I.D. = 18-1/4"
 B.C.D = 20-1/2"
 NO. OF HOLES = 8
 HOLE DIAMETER = 0.53"



FRONT VIEW



SIDE VIEW




REAR VIEW

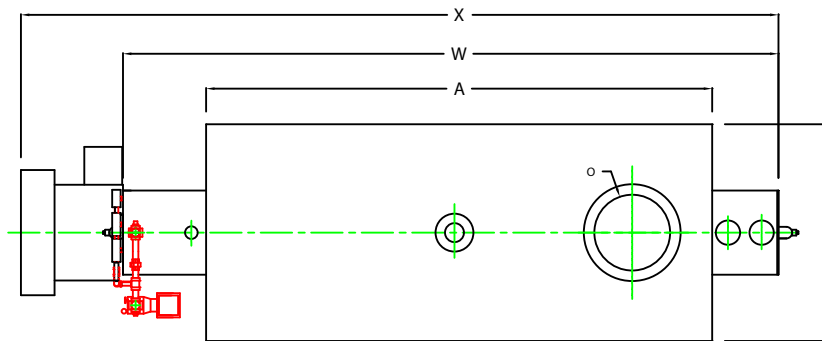
NOTE: DIMENSIONS SUBJECT TO CHANGE WITHOUT NOTICE
 CONSULT FACTORY FOR CERTIFIED DIMENSIONS.

BOILER MODEL - ZF700HS	INCHES	METRIC
A LENGTH OF BASE	120 1/2	3061
AL LENGTH OF SUPPORT FROM BASE	-	-
B HEIGHT	95 13/16	2434
C WIDTH OF BASE	47 1/2	1207
D CTR. LOWER DRUM TO CTR. UPPER DRUM	70	1778
E CENTER OF LOWER DRUM TO BOTTOM	10 13/16	275
F CENTER OF BURNER OPENING TO BOTTOM	34 5/16	872
G OUTLET FLANGE CLASS 300	4	102
H DRUM CLEARANCE FROM TOP FRONT	20 7/8	530
J CENTER OF FLUE GAS OUTLET TO REAR	19	483
K DRUM CLEARANCE FROM BASE, FRONT	15 1/2	394
L TUBE REMOVAL CLEARANCE FROM BASE	30	762
M UPPER DRUM, OD, NPS	20	508
N LOWER DRUM, OD, NPS	10 3/4	273
O FLUE GAS OUTLET, I.D.	18	457
P DRUM CLEARANCE FROM BASE, REAR	16 3/8	416
Q BLOWDOWN, NPT	1 1/2	38
R BURNER DIMENSION	44	1118
S CENTER OF TOP DRUM TO TOP OF OUTLET	16 1/2	419
T CENTER OF OUTLET TO ENCLOSURE FRONT	59 3/16	1503
U INLET, 3000 PSI ASA HALF COUPLING	1 1/4	32
V FEEDWATER INLET FROM BASE	58 13/16	1486
W OVERALL BOILER LENGTH	157 3/4	4007
X OVERALL BOILER LENGTH W/ BURNER	180 7/8	4594

NOTE: "X" DIMENSION MAY VARY BASED ON BURNER

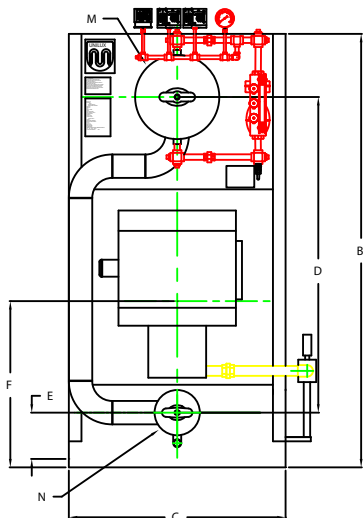
 UNILUX ADVANCED MFG., LLC. 30 COMMERCE PARK DRIVE NISKAYUNA, NY 12309 Ph: (518) 344-7490 Fax: (518) 344-7495	
<small>THIS DRAWING EMPLOYS A CONFIDENTIAL PROPRIETARY DESIGN. ALL RIGHTS FOR REPRODUCTION, MANUFACTURING OR PATENTS ARE RESERVED BY UNILUX/UNILUX CORP.</small>	
PROJECT:	-
LOCATION:	-
Model Sizes	ZF 700HS
BURNER	-
ELECTRIC	-
SUPPLY PSI	-
Drawn By:	RIZ RACAZA Date: 05AUG09
Checked By:	DAVID RAMSON Date: 05AUG09
Drawing No.	QB00000 Scale: NTS
File No.:	JB00000 REV: 0

ZF0800HS

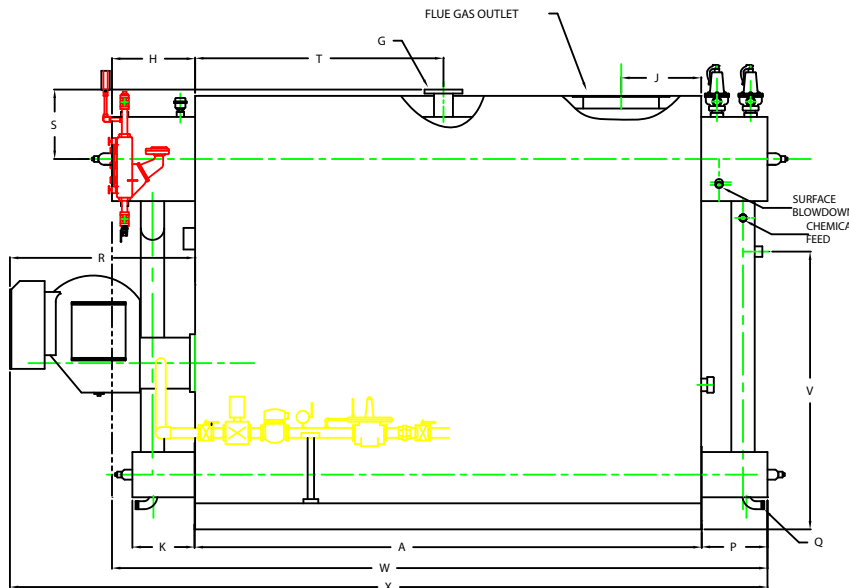


PLAN

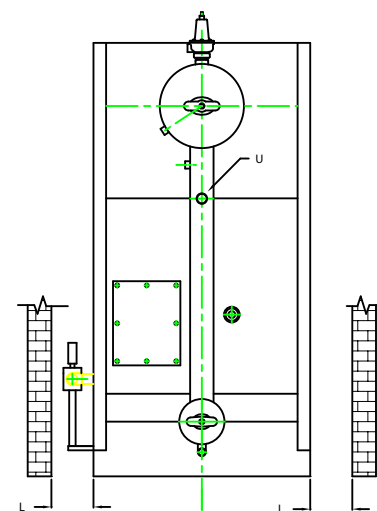
CHIMNEY FLANGE DIMS:
 O.D. = 23"
 I.D. = 18-1/4"
 B.C.D = 20-1/2"
 NO. OF HOLES = 8
 HOLE DIAMETER = 0.53"



FRONT VIEW



SIDE VIEW



REAR VIEW

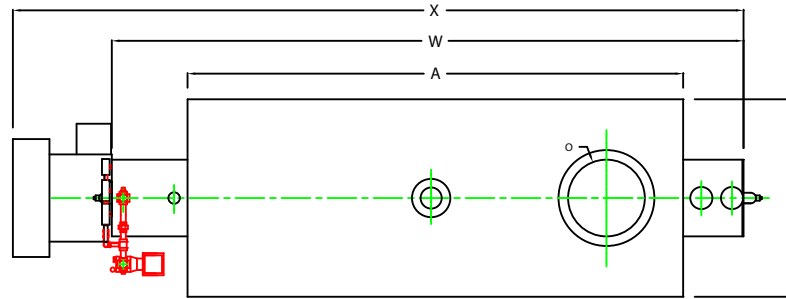
NOTE: DIMENSIONS SUBJECT TO CHANGE WITHOUT NOTICE
 CONSULT FACTORY FOR CERTIFIED DIMENSIONS.

	INCHES	METRIC
A BOILER MODEL - ZF800HS		
A LENGTH OF BASE	120 5/8	3064
A1 LENGTH OF SUPPORT FROM BASE	-	-
B HEIGHT	102 13/16	2611
C WIDTH OF BASE	51 1/2	1308
D CTR. LOWER DRUM TO CTR. UPPER DRUM	75	1905
E CENTER OF LOWER DRUM TO BOTTOM	12 13/16	325
F CENTER OF BURNER OPENING TO BOTTOM	38 5/16	973
G OUTLET FLANGE CLASS 300	4	102
H DRUM CLEARANCE FROM TOP, FRONT	20 7/8	530
J CENTER OF FLUE GAS OUTLET TO REAR	19	483
K DRUM CLEARANCE FROM BASE, FRONT	15 1/2	394
L TUBE REMOVAL CLEARANCE FROM BASE	34	864
M UPPER DRUM, O.D, NPS	20	508
N LOWER DRUM, O.D, NPS	10 3/4	273
O FLUE GAS OUTLET, I.D.	18	457
P DRUM CLEARANCE FROM BASE, REAR	16 3/8	392
Q BLOWDOWN, NPT	1 1/2	38
R BURNER DIMENSION	44	1118
S CENTER OF TOP DRUM TO TOP OF OUTLET	16 1/2	419
T CENTER OF OUTLET TO ENCLOSURE FRONT	59 3/16	1503
U INLET, 3000 PSI ASA HALF COUPLING	1 1/2	38
V FEEDWATER INLET FROM BASE	65 13/16	1672
W OVERALL BOILER LENGTH	157 7/8	4010
X OVERALL BOILER LENGTH W/ BURNER	181	4597

NOTE: "X" DIMENSION MAY VARY BASED ON BURNER

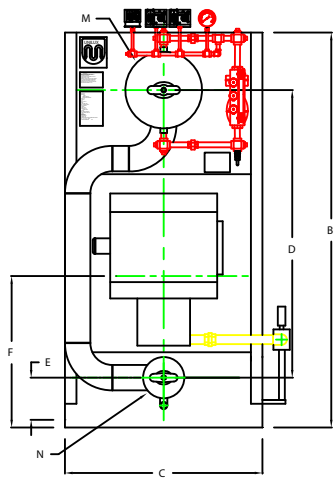
UNILUX ADVANCED MFG., LLC.	
30 COMMERCE PARK DRIVE NISKAYUNA, NY 12309 Ph: (518) 344-7490 Fax: (518) 344-7495	
<small>THIS DRAWING PREPARED BY A CONFIDENTIAL PROPRIETARY DESIGN. ALL RIGHTS FOR REPRODUCTION, MANUFACTURING OR PATENTS ARE RESERVED BY UNILUX KOLLER CORP.</small>	
PROJECT:	-
LOCATION:	-
Model Sizes:	ZF 800HS
BURNER:	-
ELECTRIC:	-
SUPPLY PSI:	-
Drawn By:	RIZ RACAZA
Checked By:	DAVID RAMSON
Drawing No.:	QB000000
File No.:	JB000000
Date:	05AUG09
Date:	05AUG09
Scale:	NTS
REV:	0

ZF0900HS

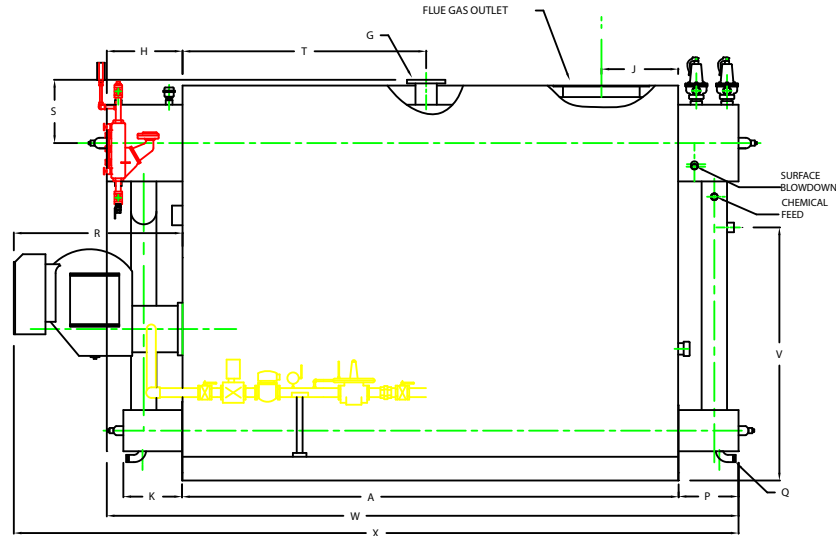


PLAN

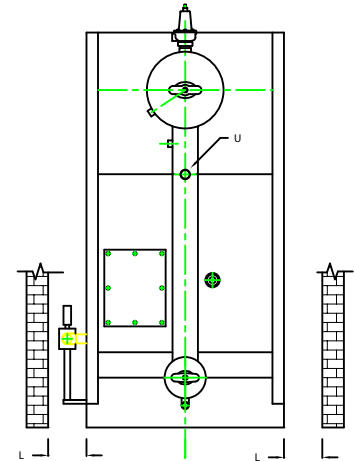
CHIMNEY FLANGE DIMS:
 O.D. = 25"
 I.D. = 20-1/4"
 B.C.D = 22-1/2"
 NO. OF HOLES = 8
 HOLE DIAMETER = 0.53"



FRONT VIEW



SIDE VIEW




REAR VIEW

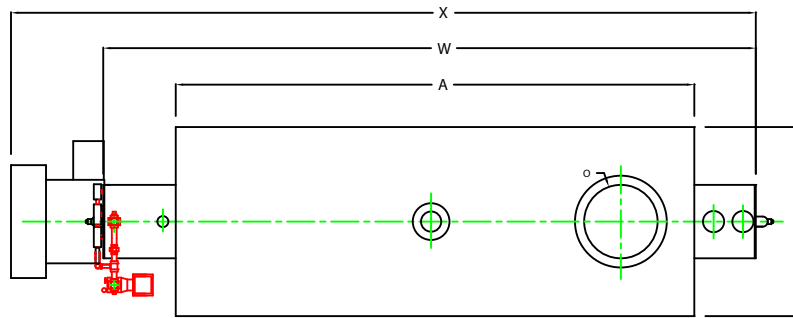
	INCHES	METRIC
BOILER MODEL - ZF900HS		
A LENGTH OF BASE	129 5/8	3292
A11 LENGTH OF SUPPORT FROM BASE		
B HEIGHT	102 13/16	2611
C WIDTH OF BASE	51 1/2	1308
D CTR. LOWER DRUM TO CTR. UPPER DRUM	75	1905
E CENTER OF LOWER DRUM TO BOTTOM	12 13/16	325
F CENTER OF BURNER OPENING TO BOTTOM	38 5/16	973
G OUTLET FLANGE CLASS 300	4	102
H DRUM CLEARANCE FROM TOP FRONT	20 7/8	530
J CENTER OF FLUE GAS OUTLET TO REAR	20	508
K DRUM CLEARANCE FROM BASE FRONT	16	406
L TUBE REMOVAL CLEARANCE FROM BASE	34	864
M UPPER DRUM, OD, NPS	20	508
N LOWER DRUM, OD, NPS	10 3/4	273
O FLUE GAS OUTLET, I.D.	20	508
P DRUM CLEARANCE FROM BASE, REAR	16 3/8	416
Q BLOWDOWN, NPT	1 1/2	38
R BURNER DIMENSION	44	1118
S CENTER OF TOP DRUM TO TOP OF OUTLET	16 1/2	419
T CENTER OF OUTLET TO ENCLOSURE FRONT	63 11/16	1618
U INLET, 3000 PSI ASA HALF COUPLING	1 1/2	38
V FEEDWATER INLET FROM BASE	65 13/16	1672
W OVERALL BOILER LENGTH	166 7/8	4238
X OVERALL BOILER LENGTH W/ BURNER	190	4826

NOTE: DIMENSIONS SUBJECT TO CHANGE WITHOUT NOTICE
 CONSULT FACTORY FOR CERTIFIED DIMENSIONS.

NOTE: "X" DIMENSION MAY VARY BASED ON BURNER

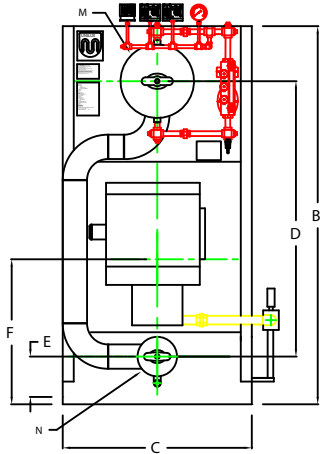
 UNILUX ADVANCED MFG., LLC. 90 COMMERCE PARK DRIVE NISKAYUNA, NY 12309 Ph: (518) 344-7490 Fax: (518) 344-7495	
<small>THIS DRAWING PROVIDES A CONFIDENTIAL PROPRIETARY DESIGN. ALL RIGHTS FOR REPRODUCTION, MANUFACTURING OR PATENT ARE RESERVED BY UNILUX WORLD CORP.</small>	
PROJECT:	-
LOCATION:	-
Model Sizes	ZF 900HS
BURNER	-
ELECTRIC	-
SUPPLY PSI	-
Drawn By:	RIZ RACAIZA
Checked By:	DAVID RAMSON
Drawing No.:	0800000
File No.:	1800000
Date:	05AUG09
Date:	05AUG09
Scale:	N.T.S.
REV.:	0

ZF1000HS

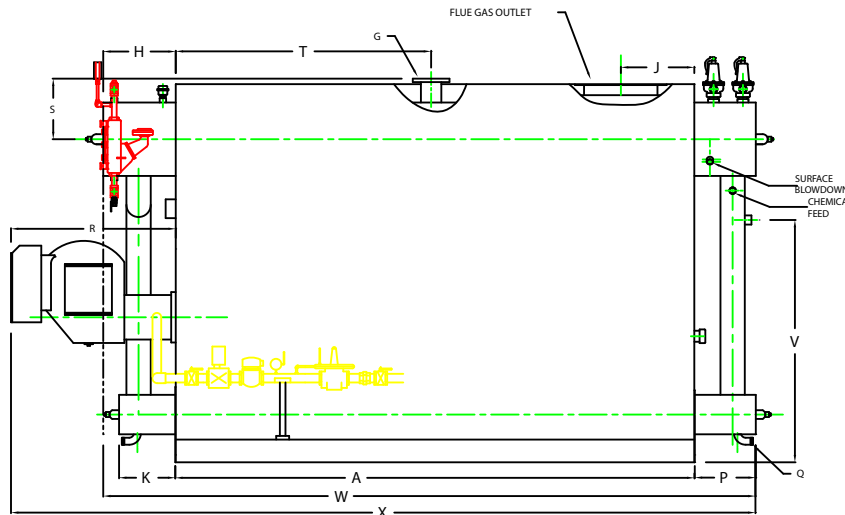


PLAN

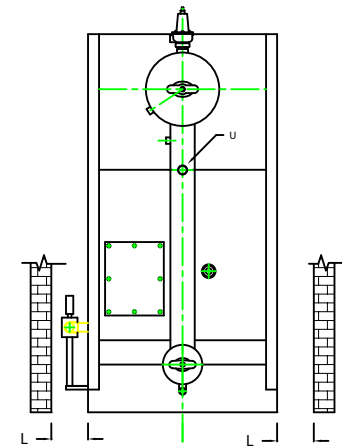
CHIMNEY FLANGE DIMS:
 O.D. = 25"
 I.D. = 20-1/4"
 B.C.D = 22-1/2"
 NO. OF HOLES = 8
 HOLE DIAMETER = 0.53"



FRONT VIEW



SIDE VIEW



REAR VIEW

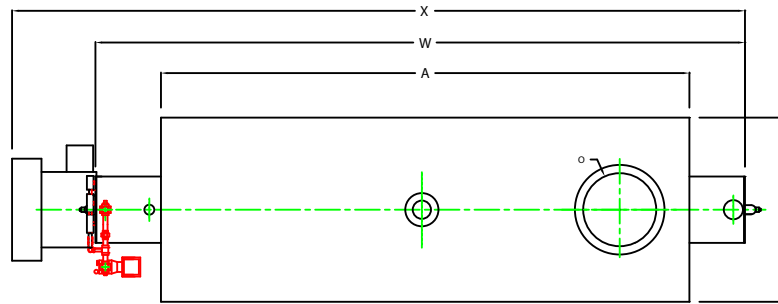
NOTE: DIMENSIONS SUBJECT TO CHANGE WITHOUT NOTICE
 CONSULT FACTORY FOR CERTIFIED DIMENSIONS.

BOILER MODEL - ZF1000HS	INCHES	METRIC
A LENGTH OF BASE	141 5/8	3597
AT LENGTH OF SUPPORT FROM BASE	-	-
B HEIGHT	102 13/16	2611
C WIDTH OF BASE	51 1/2	1308
D CTR. LOWER DRUM TO CTR. UPPER DRUM	75	1905
E CENTER OF LOWER DRUM TO BOTTOM	12 13/16	325
F CENTER OF BURNER OPENING TO BOTTOM	38 5/16	973
G OUTLET FLANGE CLASS 300	6	152
H DRUM CLEARANCE FROM TOP FRONT	20 7/8	530
J CENTER OF FLUE GAS OUTLET TO REAR	20	508
K DRUM CLEARANCE FROM BASE FRONT	16	406
L TUBE REMOVAL CLEARANCE FROM BASE	34	864
M UPPER DRUM, OD, NPS	20	508
N LOWER DRUM, OD, NPS	10 3/4	273
O FLUE GAS OUTLET, I.D.	20	508
P DRUM CLEARANCE FROM BASE, REAR	17 3/8	441
Q BLOWDOWN, NPT	1 1/2	38
R BURNER DIMENSION	44 7/8	1140
S CENTER OF TOP DRUM TO TOP OF OUTLET	16 1/2	419
T CENTER OF OUTLET TO ENCLOSURE FRONT	69 11/16	1770
U INLET, 3000 PSI ASA HALF COUPLING	1 1/2	38
V FEEDWATER INLET FROM BASE	65 13/16	1672
W OVERALL BOILER LENGTH	179 7/8	4569
X OVERALL BOILER LENGTH W/ BURNER	203 7/8	5178

NOTE: "X" DIMENSION MAY VARY BASED ON BURNER

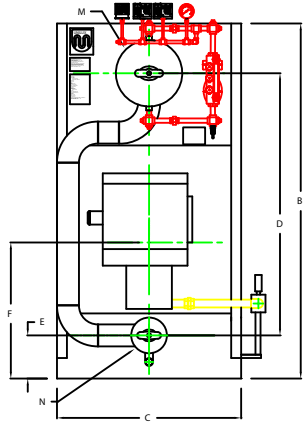
	UNILUX ADVANCED MFG., LLC. 30 COMMERCE PARK DRIVE NISKAYUNA, NY 12309 PH: (518) 344-7490 FAX: (518) 344-7495	
	<small>THIS DRAWING INCLUDES A COMPENSATED REPRESENTATION. ALL RIGHTS FOR REPRODUCTION, MANUFACTURE OR INVENTION ARE RESERVED BY UNILUX BOILER CORP.</small>	
PROJECT:	-	
LOCATION:	-	
Model Sizes:	ZF 1000HS	
BURNER:	-	
ELECTRIC:	-	
SUPPLY PSI:	-	
Drawn By:	RIZ RACAZA	Date: 05AUG09
Checked By:	DAVID RAMSON	Date: 05AUG09
Drawing No.:	QB00000	Scale: NTS
File No.:	JB00000	REV: 0

ZF1200HS

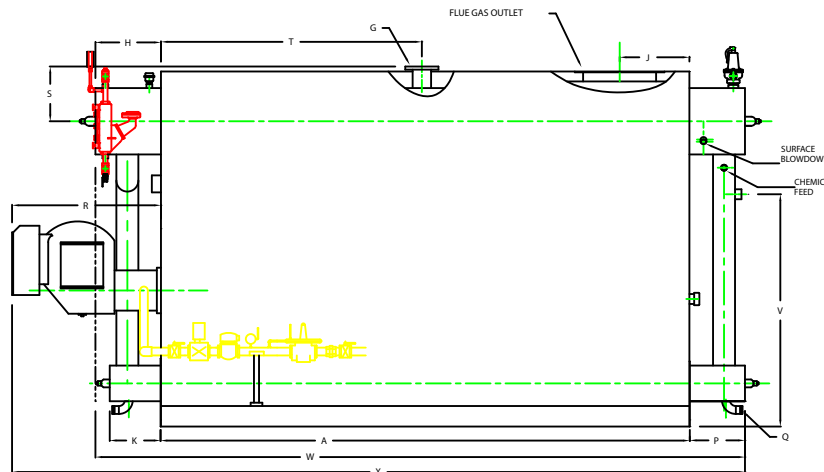


PLAN

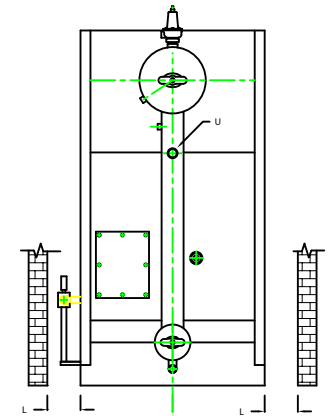
CHIMNEY FLANGE DIMS:
 O.D. = 27"
 I.D. = 22-1/4"
 B.C.D = 24-1/2"
 NO. OF HOLES = 8
 HOLE DIAMETER = 0.53"



FRONT VIEW



SIDE VIEW



REAR VIEW

NOTE: DIMENSIONS SUBJECT TO CHANGE WITHOUT NOTICE
 CONSULT FACTORY FOR CERTIFIED DIMENSIONS.

BOILER MODEL - ZF1200HS	INCHES	METRIC
A. LENGTH OF BASE	159 5/8	4054
ZA. LENGTH OF SUPPORT FROM BASE	-	-
B. HEIGHT	106 13/16	2713
C. WIDTH OF BASE	55 1/2	1410
D. CTR. LOWER DRUM TO CTR. UPPER DRUM	79	2007
E. CENTER OF LOWER DRUM TO BOTTOM	12 13/16	325
F. CENTER OF BURNER OPENING TO BOTTOM	40 5/16	1024
G. OUTLET FLANGE CLASS 300	6	152
H. DRUM CLEARANCE FROM TOP, FRONT	20 7/8	530
J. CENTER OF FLUE GAS OUTLET TO REAR	21	533
K. DRUM CLEARANCE FROM BASE, FRONT	16	406
L. TUBE REMOVAL CLEARANCE FROM BASE	38	965
M. UPPER DRUM, OD, NPS	20	508
N. LOWER DRUM, OD, NPS	10 3/4	273
O. FLUE GAS OUTLET, I.D.	22	559
P. DRUM CLEARANCE FROM BASE, REAR	17 3/8	441
Q. BLOWDOWN, NPT	2	51
R. BURNER DIMENSION	44 7/8	1140
S. CENTER OF TOP DRUM TO TOP OF OUTLET	16 1/2	419
T. CENTER OF OUTLET TO ENCLOSURE FRONT	78 3/4	2000
U. INLET, 3000 PSI ASA HALF COUPLING	2	51
V. FEEDWATER INLET FROM BASE	69 13/16	1773
W. OVERALL BOILER LENGTH	189 7/8	5026
X. OVERALL BOILER LENGTH W/ BURNER	221 7/8	5636

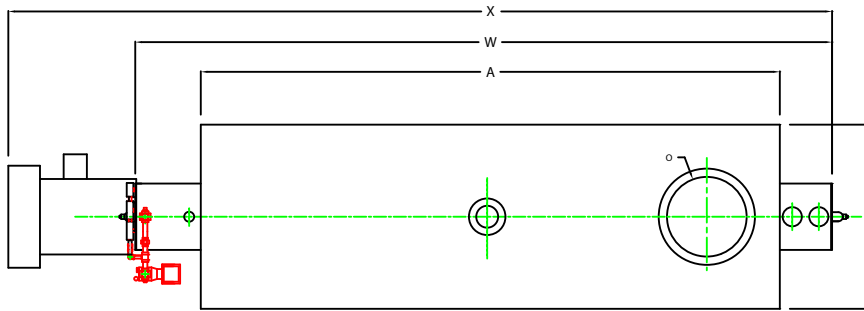
NOTE: "X" DIMENSION MAY VARY BASED ON BURNER

UNILUX ADVANCED MFG., LLC.
 30 COMMERCE PARK DRIVE
 PARKUTUNA, NY 12909
 Ph: (518) 344-7490 Fax: (518) 344-7495

THIS DRAWING IS UNLESS OTHERWISE SPECIFIED, PROPERTY OF UNILUX. ALL RIGHTS ARE RESERVED.
 THIS DRAWING IS UNLESS OTHERWISE SPECIFIED, PROPERTY OF UNILUX. ALL RIGHTS ARE RESERVED.

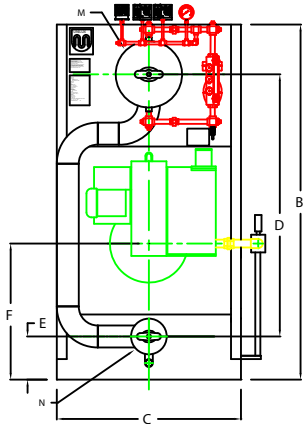
PROJECT:	
LOCATION:	
Model Size:	ZF 1200HS
BURNER:	
ELECTRIC:	
SUPPLY PSI:	
Drawn By:	RIZ RACAZA Date: 05AUG09
Checked by:	DAVID RAMSON Date: 05AUG09
Drawing No:	DR0000 Scale: NTS
File No.:	JB00000 REV: 0

ZF1400HS

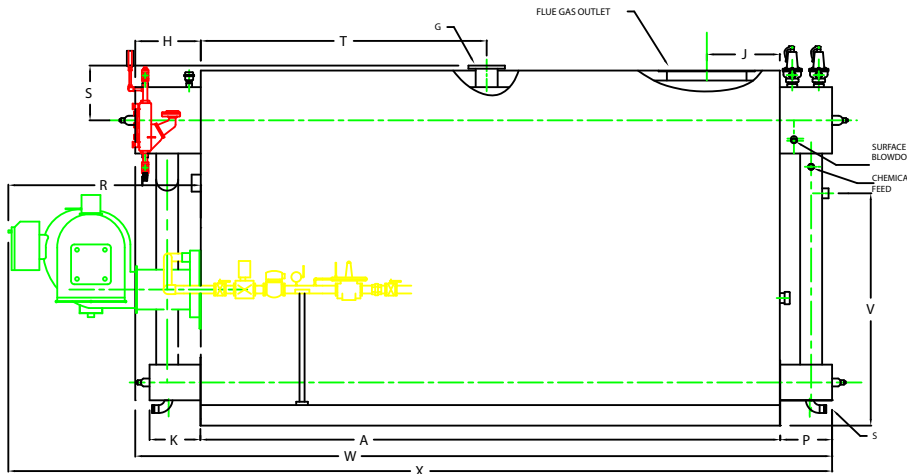


PLAN

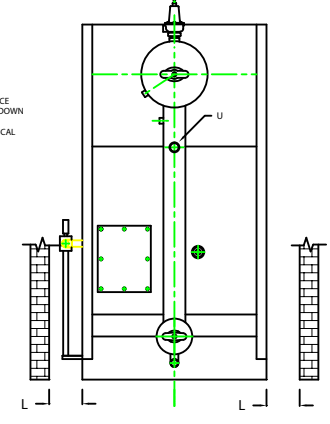
CHIMNEY FLANGE DIMS:
 O.D. = 29"
 I.D. = 24-1/4"
 B.C.D = 26-1/2"
 NO. OF HOLES = 12
 HOLE DIAMETER = 0.53"



FRONT VIEW



SIDE VIEW



REAR VIEW

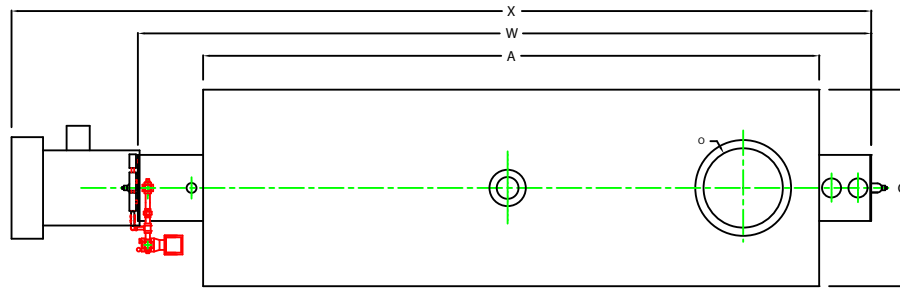
NOTE: DIMENSIONS SUBJECT TO CHANGE WITHOUT NOTICE
 CONSULT FACTORY FOR CERTIFIED DIMENSIONS.

BOILER MODEL - ZF1400HS	INCHES	METRIC
A LENGTH OF BASE	174 7/8	4442
A1 LENGTH OF SUPPORT FROM BASE	-	-
B HEIGHT	106 13/16	2713
C WIDTH OF BASE	55 1/2	1410
D CTR. LOWER DRUM TO CTR. UPPER DRUM	79	2007
E CENTER OF LOWER DRUM TO BOTTOM	12 13/16	325
F CENTER OF BURNER OPENING TO BOTTOM	40 5/16	1024
G OUTLET FLANGE CLASS 300	6	152
H DRUM CLEARANCE FROM TOP FRONT	20 7/8	530
J CENTER OF FLUE GAS OUTLET TO REAR	22	559
K DRUM CLEARANCE FROM BASE, FRONT	16	406
L TUBE REMOVAL CLEARANCE FROM BASE	38	965
M UPPER DRUM, OD, NPS	20	508
N LOWER DRUM, OD, NPS	10 3/4	273
O FLUE GAS OUTLET, I.D.	24	610
P DRUM CLEARANCE FROM BASE, REAR	16 2/8	416
Q1 BLOWDOWN, NPS	2	51
R BURNER DIMENSION	58	1473
S CENTER OF TOP DRUM TO TOP OF OUTLET	16 1/2	419
T CENTER OF OUTLET TO ENCLOSURE FRONT	86 5/16	2192
U 1" INLET, 3000 PSI ASA HALF COUPLING	2	51
V FEEDWATER INLET FROM BASE	69 13/16	1773
W OVERALL BOILER LENGTH	212 1/8	5388
X OVERALL BOILER LENGTH W/ BURNER	249 1/4	6331

NOTE: "X" DIMENSION MAY VARY BASED ON BURNER

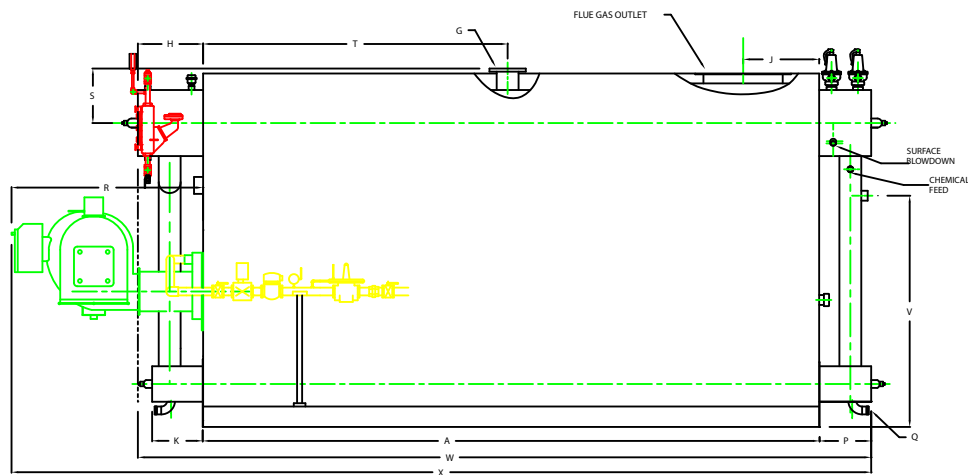
UNILUX ADVANCED MFG., LLC. 80 COMMERCE PARK DRIVE NISKAYUNA, NY 12309 PH: (518) 344-7492 FAX: (518) 344-7495	
PROJECT:	
LOCATION:	
BURNER:	ZF 1400HS
ELECTRIC:	
SUPPLY PSI:	
Drawn By:	RIZ RACAZA Date: 05AUG09
Checked By:	DAVID RAMSON Date: 05AUG09
Drawing No:	QB00000 Scale: NTS
File No.:	JB00000 REV: 0

ZF1600HS

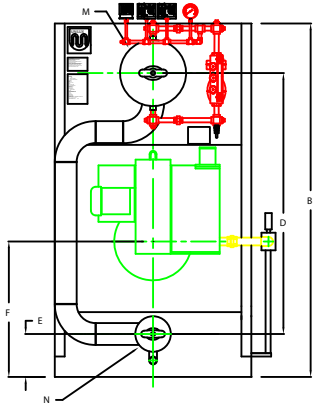


PLAN

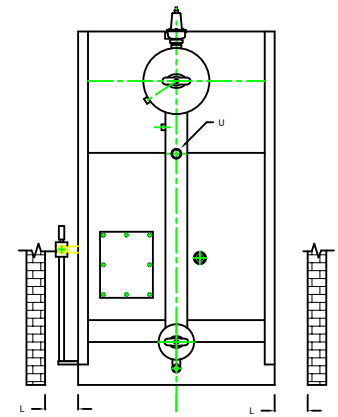
CHIMNEY FLANGE DIMS:
 O.D. = 29"
 I.D. = 24-1/4"
 B.C.D = 26-1/2"
 NO. OF HOLES = 12
 HOLE DIAMETER = 0.53"



SIDE VIEW



FRONT VIEW



REAR VIEW

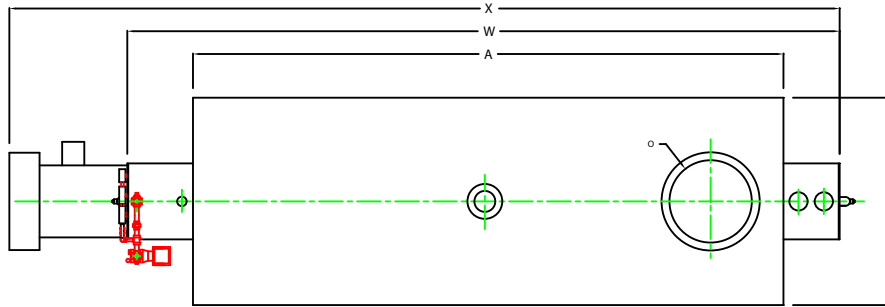
BOILER MODEL - ZF1600HS	INCHES	METRIC
A LENGTH OF BASE	186 7/8	4747
AI LENGTH OF SUPPORT FROM BASE		
B HEIGHT	106 13/16	2713
C WIDTH OF BASE	59 1/2	1511
D CTR. LOWER DRUM TO CTR. UPPER DRUM	79	2007
E CENTER OF LOWER DRUM TO BOTTOM	12 13/16	325
F CENTER OF BURNER OPENING TO BOTTOM	40 5/16	1024
G OUTLET FLANGE CLASS 300	6	152
H DRUM CLEARANCE FROM TOP FRONT	20 7/8	530
J CENTER OF FLUE GAS OUTLET TO REAR	23	584
K DRUM CLEARANCE FROM BASE FRONT	16	406
L TUBE REMOVAL CLEARANCE FROM BASE	42	1067
M UPPER DRUM, OD, NPS	20	508
N LOWER DRUM, OD, NPS	10 3/4	273
O FLUE GAS OUTLET, ID	24	610
P DRUM CLEARANCE FROM BASE, REAR	16 3/8	416
Q BLOWDOWN, NPT	2	51
R BURNER DIMENSION	58	1473
S CENTER OF TOP DRUM TO TOP OF OUTLET	116 1/2	419
T CENTER OF OUTLET TO ENCLOSURE FRONT	92 5/16	2345
U INLET, 3000 PSI ASA HALF COUPLING	2	51
V FEEDWATER INLET FROM BASE	69 13/16	1773
WI OVERALL BOILER LENGTH	224 1/8	5693
X OVERALL BOILER LENGTH W/ BURNER	261 1/4	6636

NOTE: "X" DIMENSION MAY VARY BASED ON BURNER

NOTE: DIMENSIONS SUBJECT TO CHANGE WITHOUT NOTICE
 CONSULT FACTORY FOR CERTIFIED DIMENSIONS.

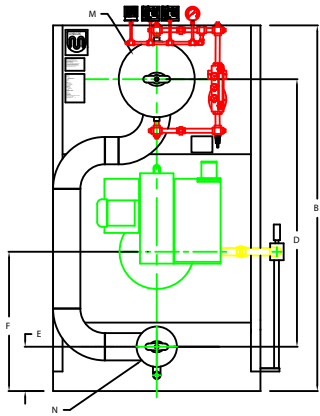
UNILUX ADVANCED MFG., LLC. 30 COMMERCE PARK DRIVE NISKAYUNA, NY 12120 Ph: (518) 344-7490 Fax: (518) 344-7495	
<small>THIS DRAWING PROVIDES A COMPREHENSIVE GENERAL OVERVIEW. ALL RIGHTS OF REPRODUCTION, PRODUCT TRADE OR PATENT ARE RESERVED BY UNILUX ADVANCED MFG., LLC.</small>	
PROJECT:	
LOCATION:	
Model Size:	ZF 1600HS
BURNER:	
ELECTRIC:	
SUPPLY PSI:	
Drawn By:	RIZ RACAZA Date: 05AUG09
Checked by:	DAVID RAMSON Date: 05AUG09
Drawing No:	050000 Scale: 1/16"
File No.:	1800000 REV: 0

ZF1800HS

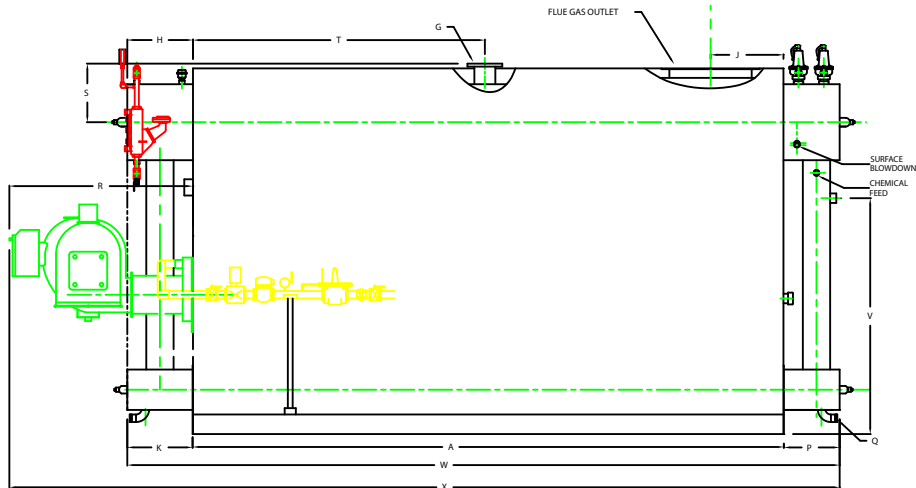


PLAN

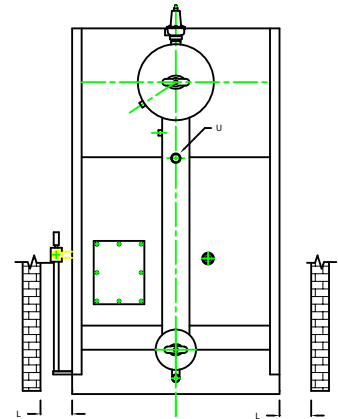
CHIMNEY FLANGE DIMS:
 O.D. = 31"
 I.D. = 26-1/4"
 B.C.D = 28-1/2"
 NO. OF HOLES = 12
 HOLE DIAMETER = 0.53"



FRONT VIEW



SIDE VIEW




REAR VIEW

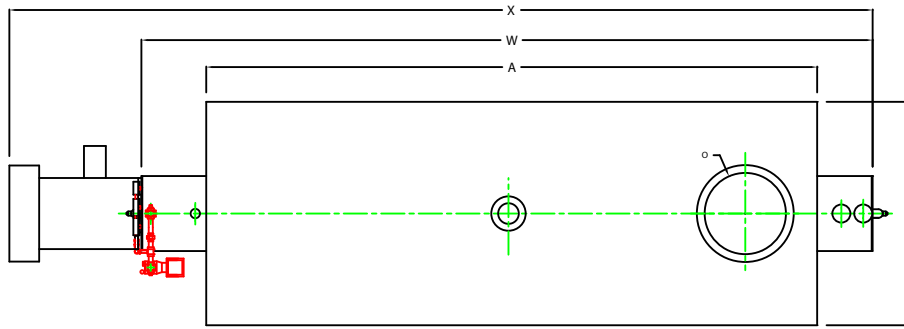
NOTE: DIMENSIONS SUBJECT TO CHANGE WITHOUT NOTICE
 CONSULT FACTORY FOR CERTIFIED DIMENSIONS.

	INCHES	METRIC
A	186 3/4	4743
AL		
AL	115 5/16	2929
B	65 1/2	1664
C	84 1/2	2146
D	13 13/16	351
E	42 5/8	1083
F	6	152
G	22 1/8	562
H	23	588
J	21 3/8	543
K	48	1219
L	24	610
M	12 3/4	324
N	26	660
O	18 3/8	467
P	2	51
Q	58	1473
R	18 1/2	470
S	92 5/16	2345
T	2	51
U	74 5/16	1888
V	227 1/4	5772
W	263 1/8	6379
X		

NOTE: "X" DIMENSION MAY VARY BASED ON BURNER

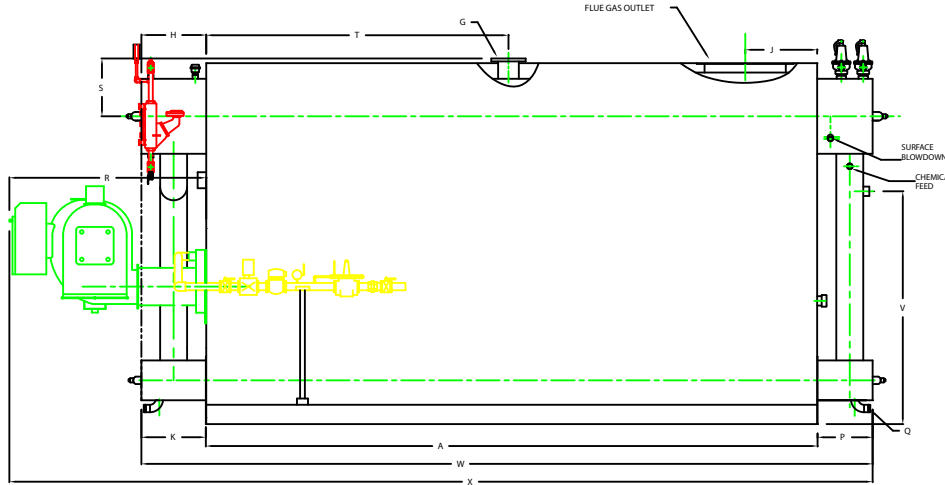
 UNILUX ADVANCED MFG. LLC. 30 COMMERCE PARK DRIVE NESKAYUNA, NY 12859 PH: (518) 844-7490 FAX: (518) 344-7495	
<small>THIS DRAWING IS UNLESS OTHERWISE SPECIFIED TO BE IN ACCORDANCE WITH THE AMERICAN NATIONAL STANDARD FOR MECHANICAL DRAWING, 1993 EDITION, AS APPLICABLE.</small>	
PROJECT:	-
LOCATION:	
Model Size:	ZF1800HS
BURNER:	
ELECTRIC:	
SUPPLY PSI:	
Drawn By:	BIG BACAZZA
Checked By:	DAVID RAMSON
Drawing No.:	18000000
File No.:	18000000
Date:	05/10/20
Scale:	NTE
REV:	0

ZF2000HS

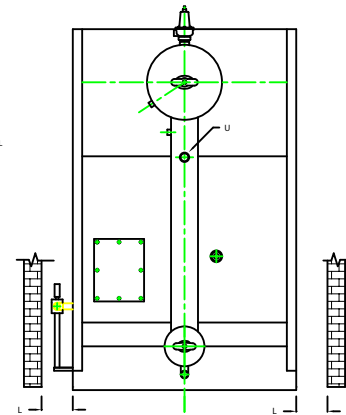


PLAN

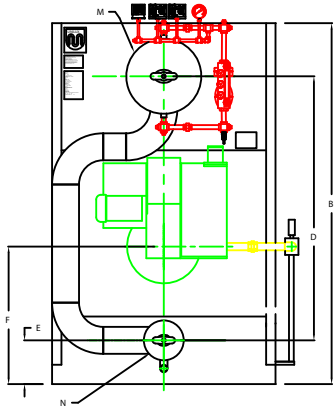
CHIMNEY FLANGE DIMS:
 O.D. = 31"
 I.D. = 26-1/4"
 B.C.D = 28-1/2"
 NO. OF HOLES = 12
 HOLE DIAMETER = 0.53"



SIDE VIEW



REAR VIEW



FRONT VIEW

NOTE: DIMENSIONS SUBJECT TO CHANGE WITHOUT NOTICE
 CONSULT FACTORY FOR CERTIFIED DIMENSIONS.

	INCHES	METRIC
A	195 7/8	4975
AX	LENGTH OF SUPPORT FROM BASE	
B	HEIGHT	2929
C	WIDTH OF BASE	1816
D	CTR. LOWER DRUM TO CTR. UPPER DRUM	3146
E	CENTER OF LOWER DRUM TO BOTTOM	351
F	CENTER OF BURNER OPENING TO BOTTOM	1393
G	OUTLET FLANGE CLASS 300	303
H	DRUM CLEARANCE FROM TOP FRONT	562
I	CENTER OF FLUE GAS OUTLET TO REAR	484
J	DRUM CLEARANCE FROM BASE, FRONT	543
K	TUBE REMOVAL CLEARANCE FROM BASE	1372
L	UPPER DRUM, O.D. NPS	610
M	LOWER DRUM, O.D. NPS	324
N	FLUE GAS OUTLET I.D.	660
P	DRUM CLEARANCE FROM BASE, REAR	467
Q	BLOWDOWN NPT	31
R	BURNER DIMENSION	1600
S	CENTER OF TOP DRUM TO TOP OF OUTLET	470
T	CENTER OF OUTLET TO ENCLOSURE FRONT	241
U	INLET, 3000 PSI ASK HALF COUPLING	57
V	FEEDWATER INLET FROM BASE	1888
W	OVERALL BOILER LENGTH	6004
X	OVERALL BOILER LENGTH W/ BURNER	7042

NOTE: "X" DIMENSION MAY VARY BASED ON BURNER

UNILUX ADVANCED MFG., LLC. 30 COMMERCE PARK DRIVE INGERSOLL, NY 13359 PH: (518) 344-7490 FAX: (518) 344-7495	
<small>SEE DRAWING FOR DIMENSIONS AND TOLERANCES. UNILUX ASSUMES NO LIABILITY FOR ANY DIMENSIONS OR TOLERANCES NOT SHOWN ON THIS DRAWING.</small>	
PROJECT:	
LOCATION:	ZF 2000HS
BURNER:	
ELECTRIC:	
SERVICES:	
Drawn By:	REF BACAZA Date: 05AUG09
Checked By:	DAVID RAMSON Date: 05AUG09
Drawing No:	08000000 Scale: NTS
File No:	J8000000 REV: 1