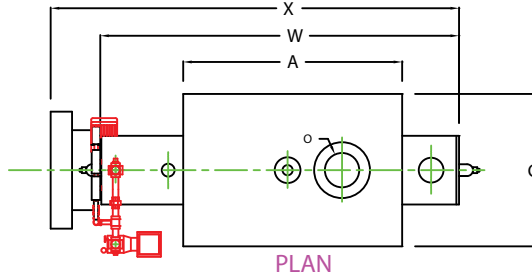
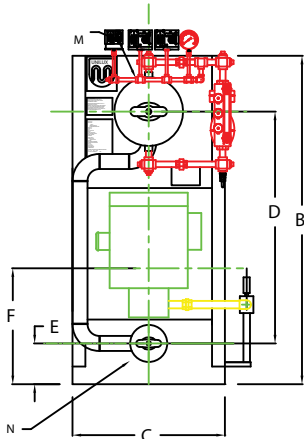


ZF0100LS

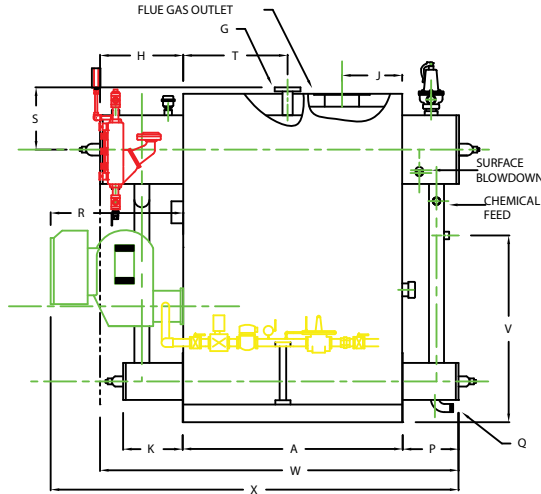


PLAN

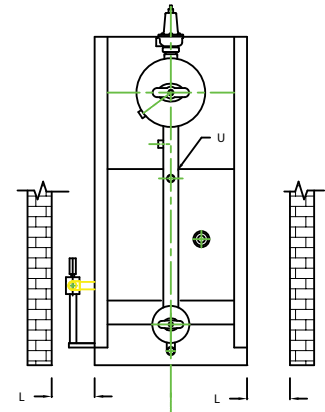
CHIMNEY FLANGE DIMS:
 O.D. = 13"
 I.D. = 8-1/4"
 B.C.D = 10-1/2"
 NO. OF HOLES = 6
 HOLE DIAMETER = 0.53"



FRONT VIEW



SIDE VIEW




REAR VIEW

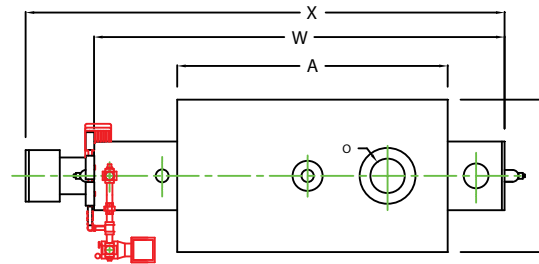
NOTE: DIMENSIONS SUBJECT TO CHANGE WITHOUT NOTICE
 CONSULT FACTORY FOR CERTIFIED DIMENSIONS.

	BOILER MODEL - ZF100LS	INCHES	METRIC
A	LENGTH OF BASE	51 1/4	1302
A1	LENGTH OF SUPPORT FROM BASE	-	-
B	HEIGHT	76 9/16	1945
C	WIDTH OF BASE	35 1/2	902
D	CTR. LOWER DRUM TO CTR. UPPER DRUM	54	1372
E	CENTER OF LOWER DRUM TO BOTTOM	9 9/16	243
F	CENTER OF BURNER OPENING TO BOTTOM	25 7/8	657
G	OUTLET FLANGE CLASS 150	2	51
H	DRUM CLEARANCE FROM TOP, FRONT	19 7/32	488
J	CENTER OF FLUE GAS OUTLET TO REAR	14	356
K	DRUM CLEARANCE FROM BASE, FRONT	13 3/4	337
L	TUBE REMOVAL CLEARANCE FROM BASE	18	457
M	UPPER DRUM, OD, NPS	16	406
N	LOWER DRUM, OD, NPS	8 5/8	219
O	FLUE GAS OUTLET, I.D.	8	203
P	DRUM CLEARANCE FROM BASE, REAR	13	330
Q	BLOWDOWN, NPT	1 1/2	38
R	BURNER DIMENSION	31 1/8	791
S	CENTER OF TOP DRUM TO TOP OF OUTLET	14 1/2	368
T	CENTER OF OUTLET TO ENCLOSURE FRONT	24 7/16	621
U	INLET, 3000 PSI ASA HALF COUPLING	1	25
V	FEEDWATER INLET FROM BASE	43 9/16	1106
W	OVERALL BOILER LENGTH	83 15/32	2120
X	OVERALL BOILER LENGTH W/ BURNER	95 3/8	2423

NOTE: "X" DIMENSION MAY VARY BASED ON BURNER

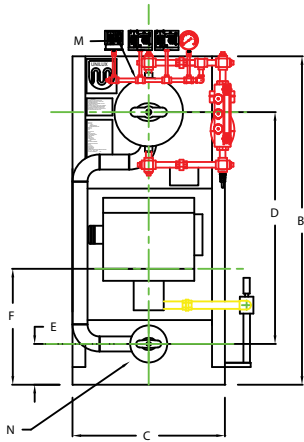
 UNILUX ADVANCED MFG., LLC. 30 COMMERCE PARK DRIVE NISKAYUNA, NY 12309 Ph: (518) 344-7490 Fax: (518) 344-7495	
<small>THIS DRAWING ENCLOSES A CONFIDENTIAL, PROPRIETARY DESIGN. ALL RIGHTS FOR REPRODUCTION, MANUFACTURING OR PATENTS ARE RESERVED BY UNILUX BOILER CORP.</small>	
PROJECT:	-
LOCATION:	-
Model Sizes	ZF 100LS
BURNER	-
ELECTRIC	-
SUPPLY PSI	-
Drawn By:	RIZ RACAZA
Checked By:	DAVID RAMSON
Drawing No.	Drawing No.
File No.:	File No.:
Date:	05AUG09
Date:	05AUG09
Scale:	NTS
REV:	0

ZF0150LS

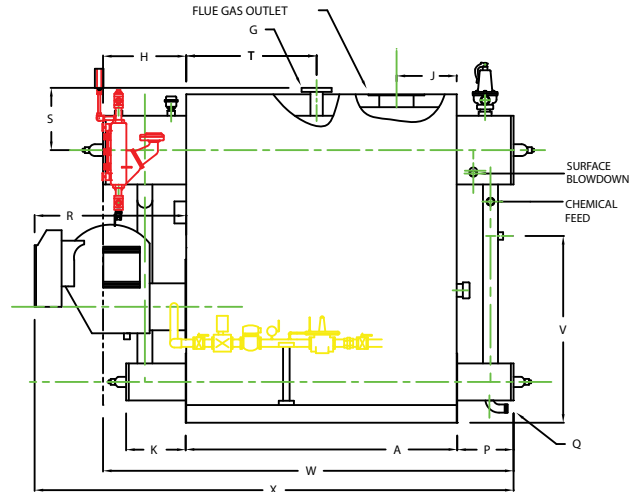


PLAN

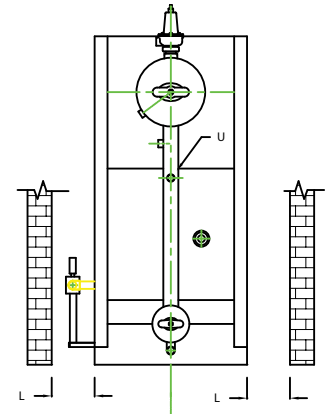
CHIMNEY FLANGE DIMS:
 O.D. = 13"
 I.D. = 8-1/4"
 B.C.D = 10-1/2"
 NO. OF HOLES = 6
 HOLE DIAMETER = 0.53"



FRONT VIEW



SIDE VIEW




REAR VIEW

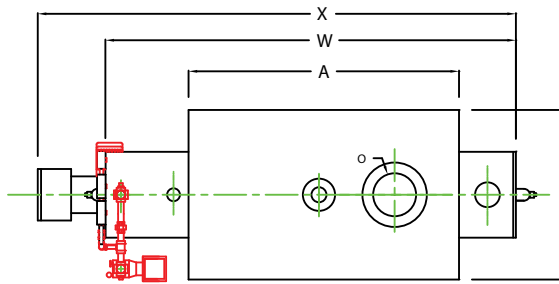
NOTE: DIMENSIONS SUBJECT TO CHANGE WITHOUT NOTICE
 CONSULT FACTORY FOR CERTIFIED DIMENSIONS.

	BOILER MODEL - ZF150LS	INCHES	METRIC
A	LENGTH OF BASE	63 1/4	1607
A1	LENGTH OF SUPPORT FROM BASE	-	-
B	HEIGHT	76 9/16	1945
C	WIDTH OF BASE	35 1/2	902
D	CTR. LOWER DRUM TO CTR. UPPER DRUM	54	1372
E	CENTER OF LOWER DRUM TO BOTTOM	9 9/16	243
F	CENTER OF BURNER OPENING TO BOTTOM	25 7/8	657
G	OUTLET FLANGE CLASS 150	2 1/2	64
H	DRUM CLEARANCE FROM TOP, FRONT	19 3/8	492
J	CENTER OF FLUE GAS OUTLET TO REAR	14	356
K	DRUM CLEARANCE FROM BASE, FRONT	13 3/4	349
L	TUBE REMOVAL CLEARANCE FROM BASE	18	457
M	UPPER DRUM, OD, NPS	16	406
N	LOWER DRUM, OD, NPS	8 5/8	219
O	FLUE GAS OUTLET, I.D.	8	203
P	DRUM CLEARANCE FROM BASE, REAR	13	330
Q	BLOWDOWN, NPT	1 1/2	38
R	BURNER DIMENSION	35 1/8	892
S	CENTER OF TOP DRUM TO TOP OF OUTLET	14 1/2	368
T	CENTER OF OUTLET TO ENCLOSURE FRONT	30 1/2	775
U	INLET, 3000 PSI ASA HALF COUPLING	1	25
V	FEEDWATER INLET FROM BASE	43 9/16	1106
W	OVERALL BOILER LENGTH	95 5/8	2429
X	OVERALL BOILER LENGTH W/ BURNER	111 3/8	2829

NOTE: "X" DIMENSION MAY VARY BASED ON BURNER

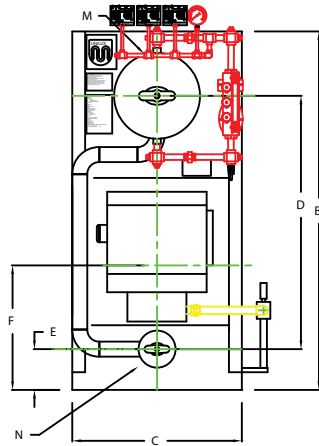
 UNILUX ADVANCED MFG., LLC. 30 COMMERCE PARK DRIVE NISKAYUNA, NY 12309 Ph: (518) 344-7490 Fax: (518) 344-7495	
<small>THIS DRAWING ENCLOSES A CONFIDENTIAL, PROPRIETARY DESIGN. ALL RIGHTS FOR REPRODUCTION, MANUFACTURING OR SERVICES ARE RESERVED BY UNILUX BOILER CORP.</small>	
PROJECT:	-
LOCATION:	-
Model Sizes	ZF 150LS
BURNER	-
ELECTRIC	-
SUPPLY PSI	-
Drawn By:	RIZ RACAZA
Checked By:	DAVID RAMSON
Drawing No.:	QB000000
File No.:	JB000000
Date:	05AUG09
Date:	05AUG09
Scale:	NTS
REV:	01

ZF0200LS

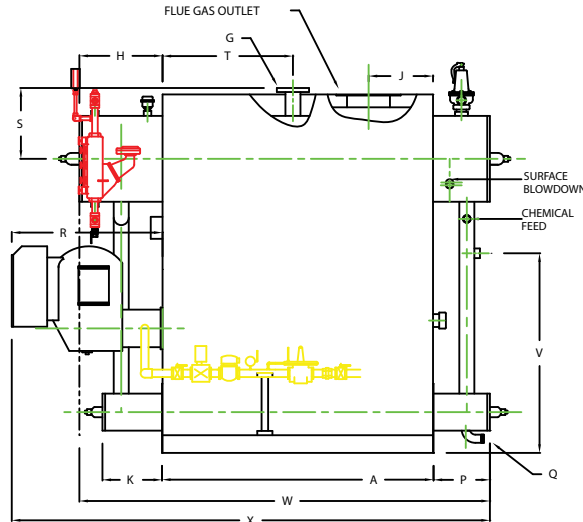


CHIMNEY FLANGE DIMS:
 O.D. = 15"
 I.D. = 10-1/4"
 B.C.D = 12-1/2"
 NO. OF HOLES = 6
 HOLE DIAMETER = 0.53"

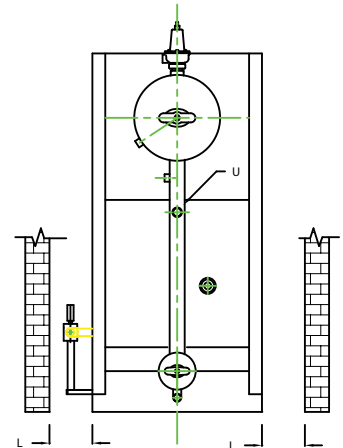
PLAN



FRONT VIEW



SIDE VIEW




REAR VIEW

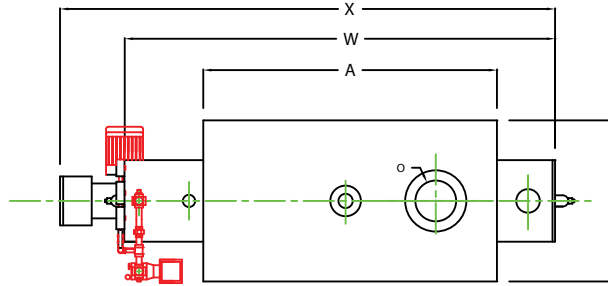
NOTE: DIMENSIONS SUBJECT TO CHANGE WITHOUT NOTICE
 CONSULT FACTORY FOR CERTIFIED DIMENSIONS.

	BOILER MODEL - ZF200LS	INCHES	METRIC
A	LENGTH OF BASE	63 1/4	1607
A1	LENGTH OF SUPPORT FROM BASE	-	-
B	HEIGHT	83 9/16	2122
C	WIDTH OF BASE	39 1/2	1003
D	CTR. LOWER DRUM TO CTR. UPPER DRUM	59	1499
E	CENTER OF LOWER DRUM TO BOTTOM	9 9/16	243
F	CENTER OF BURNER OPENING TO BOTTOM	27 7/8	708
G	OUTLET FLANGE CLASS 150	3	76
H	DRUM CLEARANCE FROM TOP FRONT	19 3/8	492
J	CENTER OF FLUE GAS OUTLET TO REAR	15	381
K	DRUM CLEARANCE FROM BASE, FRONT	13 3/4	349
L	TUBE REMOVAL CLEARANCE FROM BASE	22	559
M	UPPER DRUM, OD, NPS	20	508
N	LOWER DRUM, OD, NPS	8 5/8	219
O	FLUE GAS OUTLET, I.D.	10	254
P	DRUM CLEARANCE FROM BASE, REAR	13	330
Q	BLOWDOWN, NPT	1 1/2	38
R	BURNER DIMENSION	35 1/8	892
S	CENTER OF TOP DRUM TO TOP OF OUTLET	16 1/2	419
T	CENTER OF OUTLET TO ENCLOSURE FRONT	30 1/2	775
U	INLET, 3000 PSI ASA HALF COUPLING	1 1/4	32
V	FEEDWATER INLET FROM BASE	46 9/16	1183
W	OVERALL BOILER LENGTH	95 5/8	2429
X	OVERALL BOILER LENGTH W/ BURNER	111 3/8	2829

NOTE: "X" DIMENSION MAY VARY BASED ON BURNER

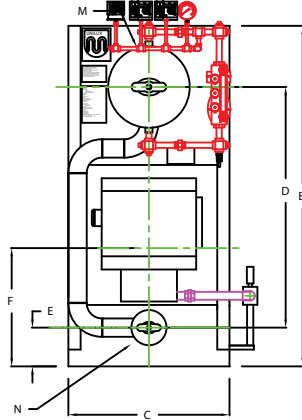
 UNILUX ADVANCED MFG., LLC. 30 COMMERCE PARK DRIVE NISKAYUNA, NY 12309 Ph: (518) 344-7490 Fax: (518) 344-7495	
<small>THIS DRAWING REMAINS A CONFIDENTIAL, PROPRIETARY DESIGN. ALL RIGHTS FOR REPRODUCTION, MANUFACTURING OR PATENTS ARE RESERVED BY UNILUX BOILER CORP.</small>	
PROJECT:	-
LOCATION:	-
Model Sizes	ZF 200LS
BURNER	-
ELECTRIC	-
SUPPLY PSI	-
Drawn By:	RIZ RACAZA
Checked By:	DAVID RAMSON
Drawing No.:	QB000000
File No.:	JB000000
Date:	05AUG09
Date:	05AUG09
Scale:	NTS
REV:	0

ZF0250LS

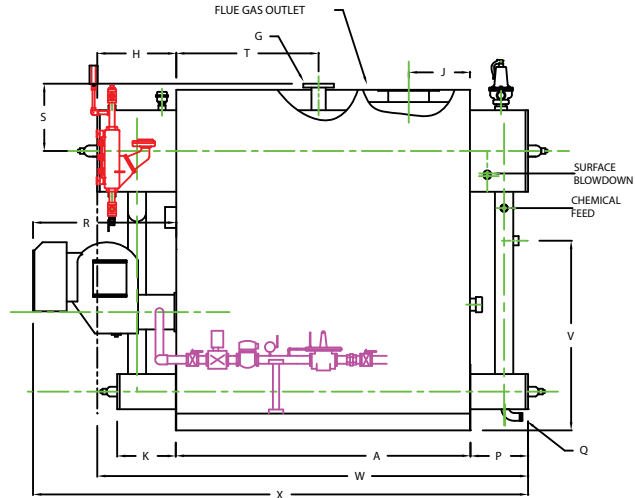


PLAN

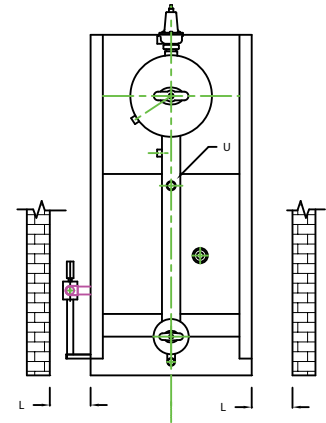
CHIMNEY FLANGE DIMS:
 O.D. = 15"
 I.D. = 10-1/4"
 B.C.D = 12-1/2"
 NO. OF HOLES = 6
 HOLE DIAMETER = 0.53"



FRONT VIEW



SIDE VIEW



REAR VIEW

NOTE: DIMENSIONS SUBJECT TO CHANGE WITHOUT NOTICE
 CONSULT FACTORY FOR CERTIFIED DIMENSIONS.

	BOILER MODEL - ZF250LS	INCHES	METRIC
A	LENGTH OF BASE	72 1/4	1835
A1	LENGTH OF SUPPORT FROM BASE	-	-
B	HEIGHT	83 9/16	2122
C	WIDTH OF BASE	39 1/2	1003
D	CTR. LOWER DRUM TO CTR. UPPER DRUM	59	1499
E	CENTER OF LOWER DRUM TO BOTTOM	9 9/16	243
F	CENTER OF BURNER OPENING TO BOTTOM	27 7/8	708
G	OUTLET FLANGE CLASS 150	3	76
H	DRUM CLEARANCE FROM TOP, FRONT	19 3/8	492
J	CENTER OF FLUE GAS OUTLET TO REAR	15	381
K	DRUM CLEARANCE FROM BASE, FRONT	14 1/4	362
L	TUBE REMOVAL CLEARANCE FROM BASE	22	559
M	UPPER DRUM, CD, NPS	20	508
N	LOWER DRUM, CD, NPS	8 5/8	219
O	FLUE GAS OUTLET, I.D.	10	254
P	DRUM CLEARANCE FROM BASE, REAR	14	356
Q	BLOWDOWN, NPT	1 1/2	38
R	BURNER DIMENSION	35 1/8	892
S	CENTER OF TOP DRUM TO TOP OF OUTLET	16 1/2	419
T	CENTER OF OUTLET TO ENCLOSURE FRONT	35 1/16	891
U	INLET, 3000 PSI ASA HALF COUPLING	1 1/4	32
V	FEEDWATER INLET FROM BASE	46 9/16	1183
W	OVERALL BOILER LENGTH	105 5/8	2683
X	OVERALL BOILER LENGTH W/ BURNER	121 3/8	3083

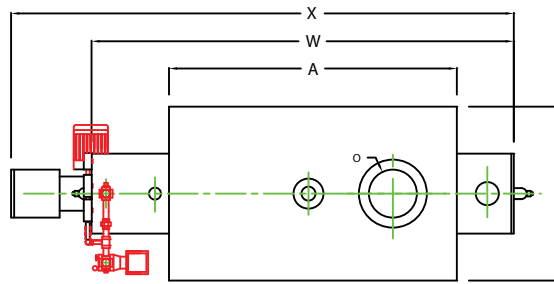
NOTE: "X" DIMENSION MAY VARY BASED ON BURNER

UNILUX ADVANCED MFG., LLC.
 30 COMMERCE PARK DRIVE
 NISKAYUNA, NY 12309
 Ph: (518) 344-7490 Fax: (518) 344-7495

THIS DRAWING PRODUCES A CONFIDENTIAL, PROPRIETARY DESIGN. ALL RIGHTS FOR REPRODUCTION, MANUFACTURING OR OTHERWISE ARE RESERVED BY UNILUX BOILER CORP.

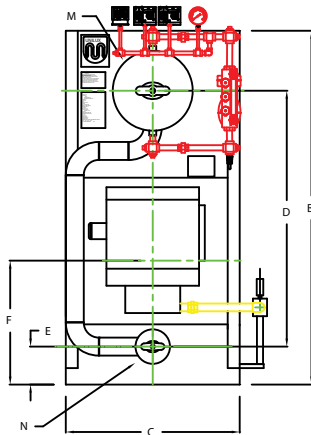
PROJECT:	-
LOCATION:	-
Model Sizes	ZF-250LS
BURNER:	-
ELECTRIC:	-
SUPPLY PSI:	-
Drawn By:	RIZ RACAZA
Date:	05AUG09
Checked By:	DAVID RAMSON
Date:	05AUG09
Drawing No.:	QB000000
Scale:	NTS
File No.:	JB000000
REV:	0

ZF0300LS

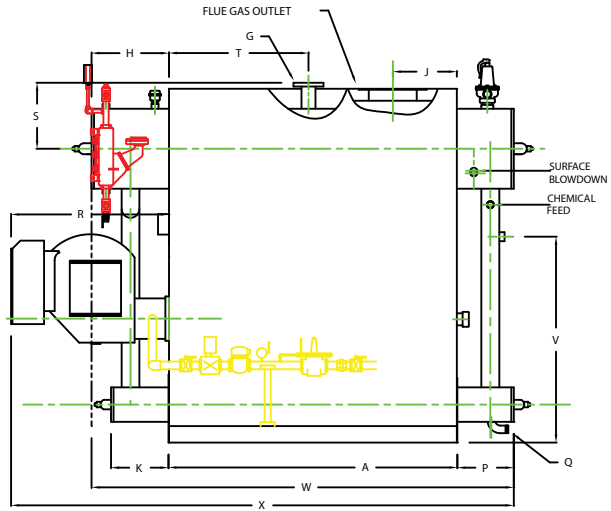


PLAN

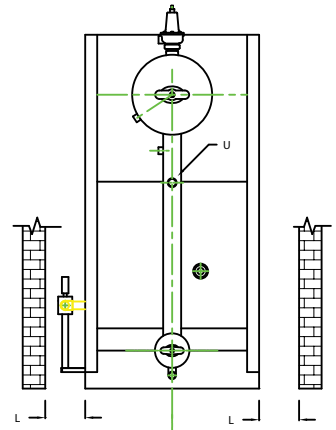
CHIMNEY FLANGE DIMS:
 O.D. = 17"
 I.D. = 12-1/4"
 B.C.D = 14-1/2"
 NO. OF HOLES = 8
 HOLE DIAMETER = 0.53"



FRONT VIEW



SIDE VIEW



REAR VIEW

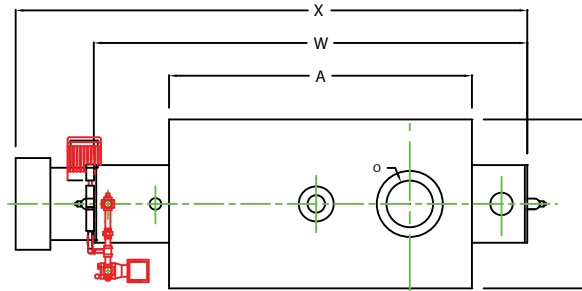
	BOILER MODEL - ZF300LS	INCHES	METRIC
A	LENGTH OF BASE	72 1/4	1830
A1	LENGTH OF SUPPORT FROM BASE	-	-
B	HEIGHT	88 9/16	2249
C	WIDTH OF BASE	43 1/2	1105
D	CTR. LOWER DRUM TO CTR. UPPER DRUM	64	1625
E	CENTER OF LOWER DRUM TO BOTTOM	9 9/16	243
F	CENTER OF BURNER OPENING TO BOTTOM	29 3/8	746
G	OUTLET FLANGE CLASS 150	3	76
H	DRUM CLEARANCE FROM TOP FRONT	19 3/8	492
J	CENTER OF FLUE GAS OUTLET TO REAR	16	406
K	DRUM CLEARANCE FROM BASE, FRONT	14 1/4	362
L	TUBE REMOVAL CLEARANCE FROM BASE	26	660
M	UPPER DRUM, OD, NPS	20	508
N	LOWER DRUM, OD, NPS	8 5/8	219
O	FLUE GAS OUTLET, I.D.	12	305
P	DRUM CLEARANCE FROM BASE, REAR	14	356
Q	BLOWDOWN, NPT	1 1/2	38
R	BURNER DIMENSION	39 1/2	1003
S	CENTER OF TOP DRUM TO TOP OF OUTLET	16 1/2	419
T	CENTER OF OUTLET TO ENCLOSURE FRONT	35 1/16	891
U	INLET, 3000 PSI ASA HALF COUPLING	1 1/4	32
V	FEEDWATER INLET FROM BASE	51 9/16	1310
W	OVERALL BOILER LENGTH	105 5/8	2683
X	OVERALL BOILER LENGTH W/ BURNER	125 3/4	3194

NOTE: DIMENSIONS SUBJECT TO CHANGE WITHOUT NOTICE
 CONSULT FACTORY FOR CERTIFIED DIMENSIONS.

NOTE: "X" DIMENSION MAY VARY BASED ON BURNER

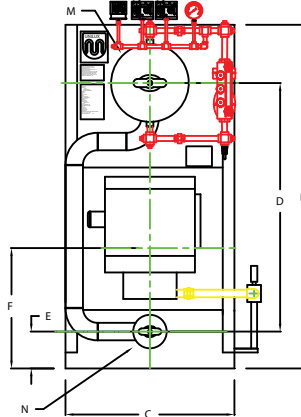
	UNILUX ADVANCED MFG., LLC. 30 COMMERCE PARK DRIVE NISKAYUNA, NY 12309 Ph: (518) 344-7490 Fax: (518) 344-7495		
	<small>THIS DRAWING PROCESS IS A CONFIDENTIAL, PROPRIETARY DESIGN. ALL RIGHTS FOR REPRODUCTION, MANUFACTURING OR PATENTS ARE RESERVED BY UNILUX (NYSE: UNL).</small>		
PROJECT:	-		
LOCATION:	-		
Model Sizes:	ZF-300LS		
BURNER:	-		
ELECTRIC:	-		
SUPPLY PSI:	-		
Drawn By:	RIZ RACAZA	Date:	05AUG09
Checked By:	DAVID RAMSON	Date:	05AUG09
Drawing No.:	QB000000	Scale:	NTS
File No.:	JB000000	REV.:	0

ZF0350LS

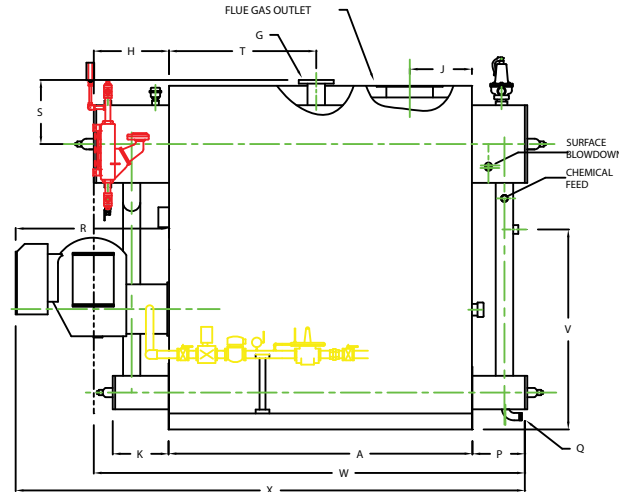


PLAN

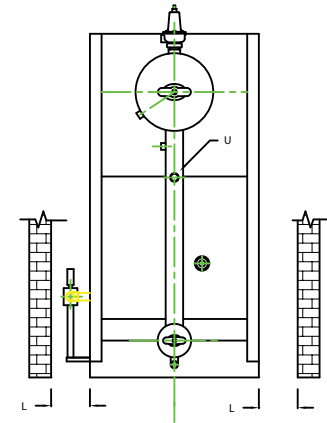
CHIMNEY FLANGE DIMS:
 O.D. = 17"
 I.D. = 12-1/4"
 B.C.D. = 14-1/2"
 NO. OF HOLES = 8
 HOLE DIAMETER = 0.53"



FRONT VIEW



SIDE VIEW




REAR VIEW

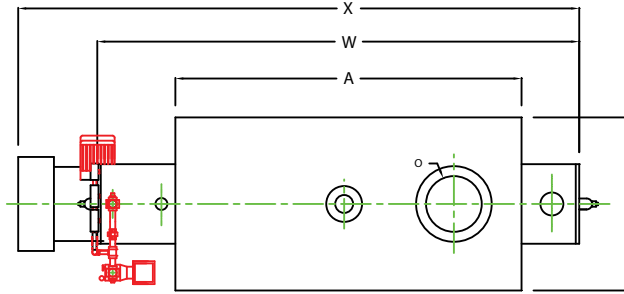
	BOILER MODEL - ZF350LS	INCHES	METRIC
A	LENGTH OF BASE	78 1/4	1988
A1	LENGTH OF SUPPORT FROM BASE		
B	HEIGHT	88 9/16	2249
C	WIDTH OF BASE	43 1/2	1105
D	CTR. LOWER DRUM TO CTR. UPPER DRUM	64	1625
E	CENTER OF LOWER DRUM TO BOTTOM	9 9/16	243
F	CENTER OF BURNER OPENING TO BOTTOM	29 3/8	746
G	OUTLET FLANGE CLASS 150	4	102
H	DRUM CLEARANCE FROM TOP FRONT	19 3/8	492
J	CENTER OF FLUE GAS OUTLET TO REAR	16	406
K	DRUM CLEARANCE FROM BASE, FRONT	14 1/4	362
L	TUBE REMOVAL CLEARANCE FROM BASE	26	660
M	UPPER DRUM, OD, NPS	20	508
N	LOWER DRUM, OD, NPS	8 5/8	219
O	FLUE GAS OUTLET, I.D.	12	305
P	DRUM CLEARANCE FROM BASE, REAR	14	356
Q	BLOWDOWN, NPT	1 1/2	38
R	BURNER DIMENSION	39 1/2	1003
S	CENTER OF TOP DRUM TO TOP OF OUTLET	16 1/2	419
T	CENTER OF OUTLET TO ENCLOSURE FRONT	38 1/16	967
U	INLET, 3000 PSI ASA HALF COUPLING	1 1/4	32
V	FEEDWATER INLET FROM BASE	51 9/16	1310
W	OVERALL BOILER LENGTH	111 5/8	2835
X	OVERALL BOILER LENGTH W/ BURNER	131 3/4	3346

NOTE: DIMENSIONS SUBJECT TO CHANGE WITHOUT NOTICE
 CONSULT FACTORY FOR CERTIFIED DIMENSIONS.

NOTE: "X" DIMENSION MAY VARY BASED ON BURNER

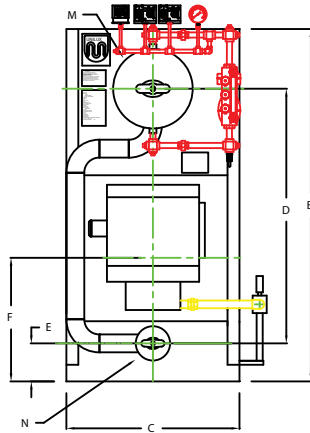
 UNILUX ADVANCED MFG., LLC. 30 COMMERCE PARK DRIVE NISKAYUNA, NY 12009 Ph: (518) 344-7490 Fax: (518) 344-7495	
<small>THIS DRAWING REMAINS A CONFIDENTIAL, PROPRIETARY DESIGN. ALL RIGHTS FOR REPRODUCTION, MANUFACTURING, OR PATENTS ARE RESERVED BY UNILUX BOILER CORP.</small>	
PROJECT:	-
LOCATION:	-
Model Sizes:	ZF 350LS
BURNER:	-
ELECTRIC:	-
SUPPLY PSI:	-
Drawn By:	RIZ RACAZA
Date:	05AUG09
Checked By:	DAVID RAMSON
Date:	05AUG09
Drawing No.:	QB000000
Scale:	NTS
File No.:	JB000000
REV:	0

ZF0400LS

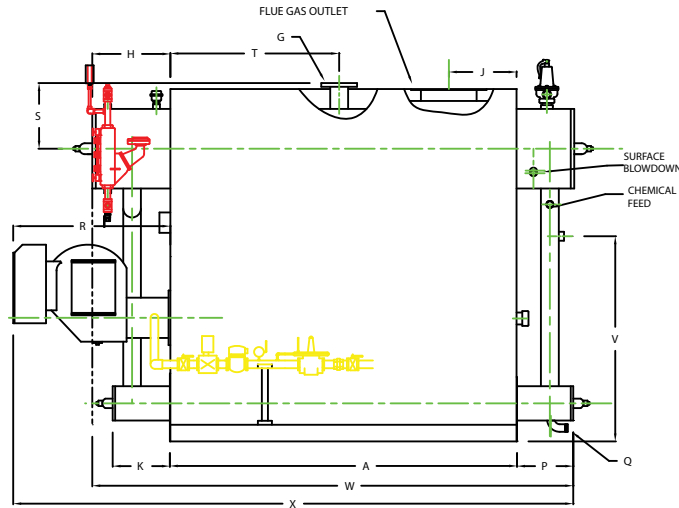


PLAN

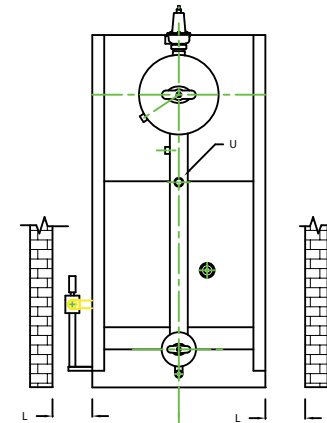
CHIMNEY FLANGE DIMS:
 O.D. = 19"
 I.D. = 14-1/4"
 B.C.D = 16-1/2"
 NO. OF HOLES = 8
 HOLE DIAMETER = 0.53"



FRONT VIEW



SIDE VIEW



REAR VIEW

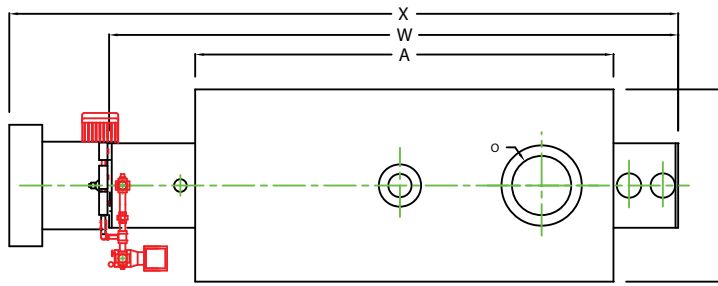
NOTE: DIMENSIONS SUBJECT TO CHANGE WITHOUT NOTICE
 CONSULT FACTORY FOR CERTIFIED DIMENSIONS.

	BOILER MODEL - ZF400LS	INCHES	METRIC
A	LENGTH OF BASE	87 1/4	2216
A1	LENGTH OF SUPPORT FROM BASE		
B	HEIGHT	88 9/16	2249
C	WIDTH OF BASE	43 1/2	1105
D	CTR. LOWER DRUM TO CTR. UPPER DRUM	64	1625
E	CENTER OF LOWER DRUM TO BOTTOM	9 9/16	243
F	CENTER OF BURNER OPENING TO BOTTOM	29 3/8	746
G	OUTLET FLANGE CLASS 150	4	102
H	DRUM CLEARANCE FROM TOP, FRONT	19 7/8	505
J	CENTER OF FLUE GAS OUTLET TO REAR	17	432
K	DRUM CLEARANCE FROM BASE, FRONT	14 1/4	362
L	TUBE REMOVAL CLEARANCE FROM BASE	26	660
M	UPPER DRUM, OD, NPS	20	508
N	LOWER DRUM, OD, NPS	8 5/8	219
O	FLUE GAS OUTLET, I.D.	14	356
P	DRUM CLEARANCE FROM BASE, REAR	14	356
Q	BLOWDOWN, NPT	1 1/2	38
R	BURNER DIMENSION	39 1/2	1003
S	CENTER OF TOP DRUM TO TOP OF OUTLET	16 1/2	419
T	CENTER OF OUTLET TO ENCLOSURE FRONT	42 9/16	1081
U	INLET, 3000 PSI ASA HALF COUPLING	1 1/4	32
V	FEEDWATER INLET FROM BASE	51 9/16	1310
W	OVERALL BOILER LENGTH	121 1/8	3077
X	OVERALL BOILER LENGTH W/ BURNER	140 3/4	3575

NOTE: "X" DIMENSION MAY VARY BASED ON BURNER

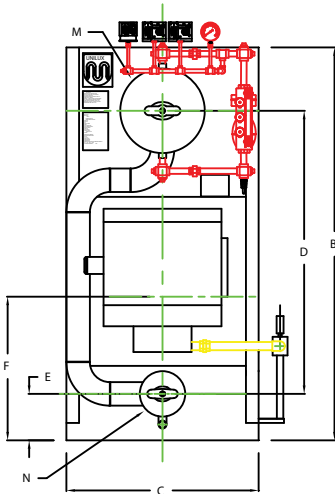
	UNLUX ADVANCED MFG., LLC. 30 COMMERCE PARK DRIVE NISKAYUNA, NY 12309 Ph: (518) 344-7490 Fax: (518) 344-7495		
	<small>THIS DRAWING CONVEYS A CONFIDENTIAL, PROPRIETARY DESIGN. ALL RIGHTS FOR REPRODUCTION, MANUFACTURING OR PATENTS ARE RESERVED BY UNLUX ADVANCED MFG.</small>		
PROJECT:	-		
LOCATION:	-		
Model Sizes	ZF-400LS		
BURNER:	-		
ELECTRIC:	-		
SUPPLY PSI:	-		
Drawn By:	RIZ RACAZA	Date:	05AUG09
Checked By:	DAVID RAMSON	Date:	05AUG09
Drawing No.:	QB000000	Scale:	NTS
File No.:	JB000000	REV:	0

ZF0500LS

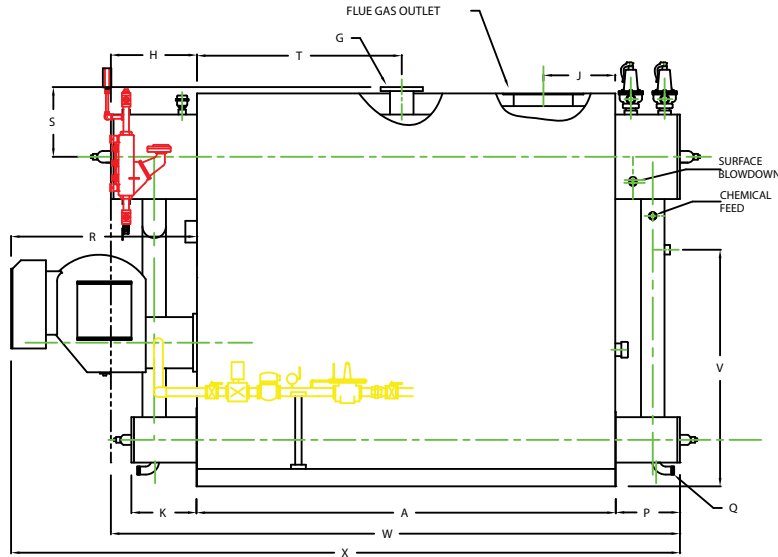


PLAN

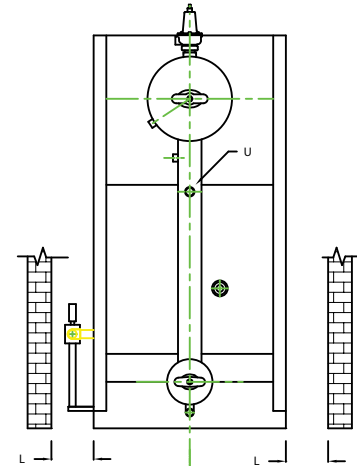
CHIMNEY FLANGE DIMS:
 O.D. = 19"
 I.D. = 14-1/4"
 B.C.D = 16-1/2"
 NO. OF HOLES = 8
 HOLE DIAMETER = 0.53"



FRONT VIEW



SIDE VIEW




REAR VIEW

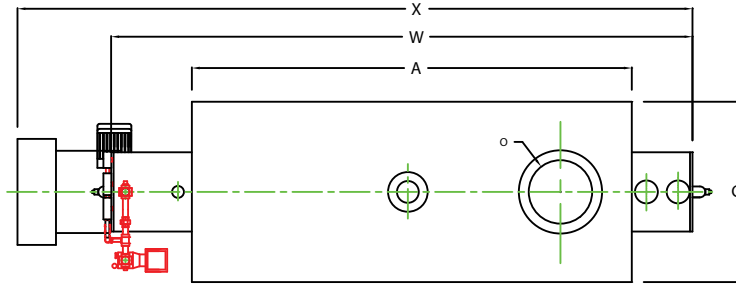
	BOILER MODEL - ZF500LS	INCHES	METRIC
A	LENGTH OF BASE	99 1/4	2521
A1	LENGTH OF SUPPORT FROM BASE		
B	HEIGHT	92 13/16	2357
C	WIDTH OF BASE	45 1/2	1156
D	CTR. LOWER DRUM TO CTR. UPPER DRUM	67	1702
E	CENTER OF LOWER DRUM TO BOTTOM	10 13/16	275
F	CENTER OF BURNER OPENING TO BOTTOM	33	838
G	OUTLET FLANGE CLASS 150	4	102
H	DRUM CLEARANCE FROM TOP, FRONT	20 3/8	518
J	CENTER OF FLUE GAS OUTLET TO REAR	17	432
K	DRUM CLEARANCE FROM BASE, FRONT	15 9/32	388
L	TUBE REMOVAL CLEARANCE FROM BASE	28	711
M	UPPER DRUM, OD, NPS	20	508
N	LOWER DRUM, OD, NPS	10 3/4	273
O	FLUE GAS OUTLET, I.D.	14	356
P	DRUM CLEARANCE FROM BASE, REAR	15	381
Q	BLOWDOWN, NPT	1 1/2	38
R	BURNER DIMENSION	44	1118
S	CENTER OF TOP DRUM TO TOP OF OUTLET	16 1/2	419
T	CENTER OF OUTLET TO ENCLOSURE FRONT	48 5/8	1235
U	INLET, 3000 PSI ASA HALF COUPLING	1 1/2	38
V	FEEDWATER INLET FROM BASE	55 9/16	1411
W	OVERALL BOILER LENGTH	134 5/8	3419
X	OVERALL BOILER LENGTH W/ BURNER	158 1/4	4020

NOTE: DIMENSIONS SUBJECT TO CHANGE WITHOUT NOTICE
 CONSULT FACTORY FOR CERTIFIED DIMENSIONS.

NOTE: "X" DIMENSION MAY VARY BASED ON BURNER

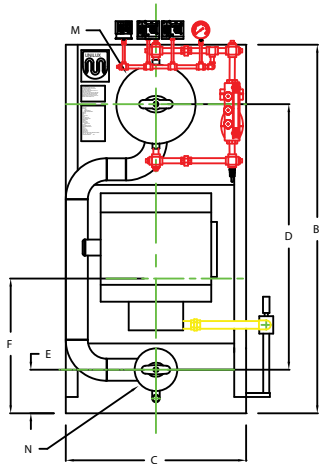
 UNILUX ADVANCED MFG., LLC. 30 COMMERCE PARK DRIVE NESKAYUNA, NY 12309 Ph: (518) 344-7490 Fax: (518) 344-7495			
<small>THIS DRAWING PROCESSES A CONFIDENTIAL PROPRIETARY DESIGN. ALL RIGHTS FOR REPRODUCTION, MANUFACTURING OR INVENTION ARE RESERVED BY UNILUX ADVANCED MFG.</small>			
PROJECT:	-		
LOCATION:	-		
Model Sizes:	ZF 500LS		
BURNER	-		
ELECTRIC	-		
SUPPLY PSI	-		
Drawn By:	RIZ RACAIZA	Date:	05AUG09
Checked By:	DAVID RAMSON	Date:	05AUG09
Drawing No.:	QB000000	Scale:	NTS
File No.:	JB000000	REV.:	0

ZF0600LS

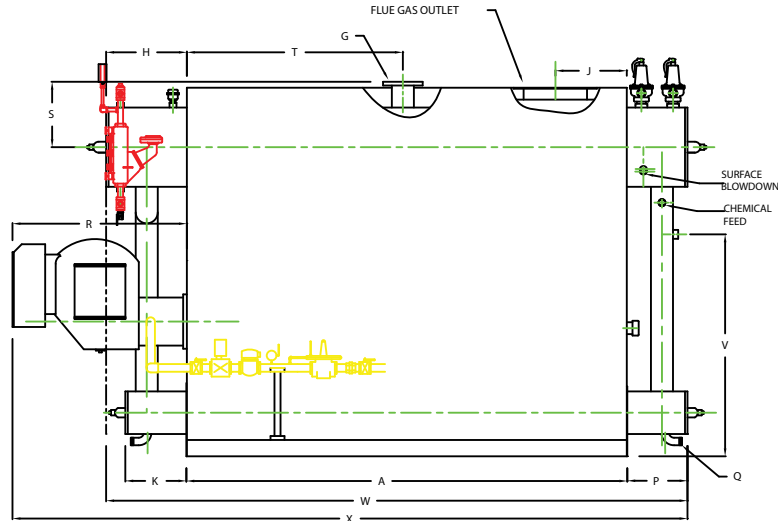


PLAN

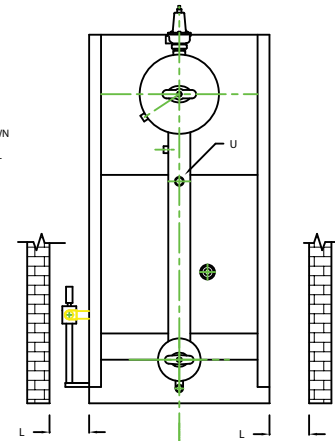
CHIMNEY FLANGE DIMS:
 O.D. = 21"
 I.D. = 16-1/4"
 B.C.D = 18-1/2"
 NO. OF HOLES = 8
 HOLE DIAMETER = 0.53"



FRONT VIEW



SIDE VIEW




REAR VIEW

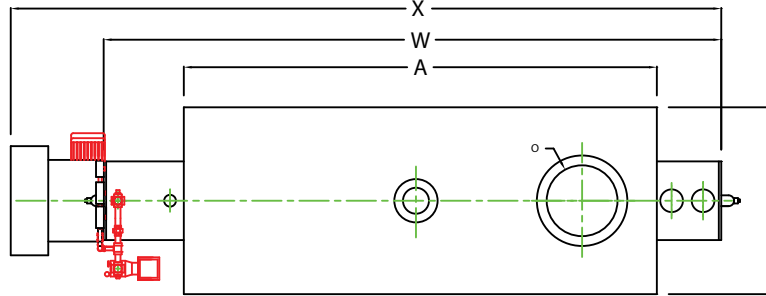
	INCHES	METRIC
BOILER MODEL - ZF600LS		
A LENGTH OF BASE	111 1/4	2826
A1 LENGTH OF SUPPORT FROM BASE		
B HEIGHT	92 13/16	2357
C WIDTH OF BASE	45 1/2	1156
D CTR. LOWER DRUM TO CTR. UPPER DRUM	67	1702
E CENTER OF LOWER DRUM TO BOTTOM	10 13/16	275
F CENTER OF BURNER OPENING TO BOTTOM	33	838
G OUTLET FLANGE CLASS 150	6	152
H DRUM CLEARANCE FROM TOP FRONT	20 3/8	518
J CENTER OF FLUE GAS OUTLET TO REAR	18	457
K DRUM CLEARANCE FROM BASE, FRONT	15 9/32	388
L TUBE REMOVAL CLEARANCE FROM BASE	28	711
M UPPER DRUM, OD, NPS	20	508
N LOWER DRUM, OD, NPS	10 3/4	273
O FLUE GAS OUTLET, I.D.	16	406
P DRUM CLEARANCE FROM BASE, REAR	15	381
Q BLOWDOWN, NPT	1 1/2	38
R BURNER DIMENSION	44	1118
S CENTER OF TOP DRUM TO TOP OF OUTLET	16 1/2	419
T CENTER OF OUTLET TO ENCLOSURE FRONT	54 5/8	1387
U INLET, 3000 PSI ASA HALF-COUPLING	1 1/2	38
V FEEDWATER INLET FROM BASE	55 9/16	1411
W OVERALL BOILER LENGTH	146 5/8	3724
X OVERALL BOILER LENGTH W/ BURNER	170 1/4	4324

NOTE: DIMENSIONS SUBJECT TO CHANGE WITHOUT NOTICE
 CONSULT FACTORY FOR CERTIFIED DIMENSIONS.

NOTE: "X" DIMENSION MAY VARY BASED ON BURNER

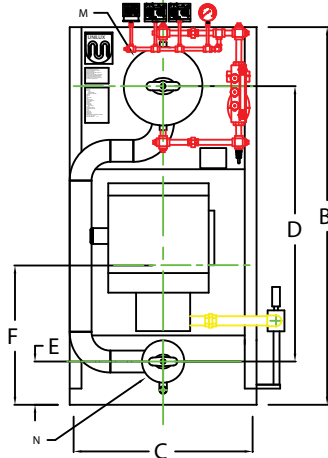
 UNILUX ADVANCED MFG., LLC. 30 COMMERCE PARK DRIVE NISKAYUNA, NY 12309 Ph: (518) 344-7490 Fax: (518) 344-7495	(THIS DRAWING PREPARES A CONFIDENTIAL, PROPRIETARY DESIGN. ALL RIGHTS FOR REPRODUCTION, MANUFACTURING OR PATENTS ARE RESERVED BY UNILUX BOILER CORP.)	
	PROJECT:	-
LOCATION:	-	
Model Sizes	ZF 600LS	
BURNER:	-	
ELECTRIC:	-	
SUPPLY PSI:	-	
Drawn By:	RIZ RACAZA	Date: 05AUG09
Checked By:	DAVID RAMSON	Date: 05AUG09
Drawing No.	QB000000	Scale: NTS
File No.:	JB000000	REV: 0

ZF0700LS

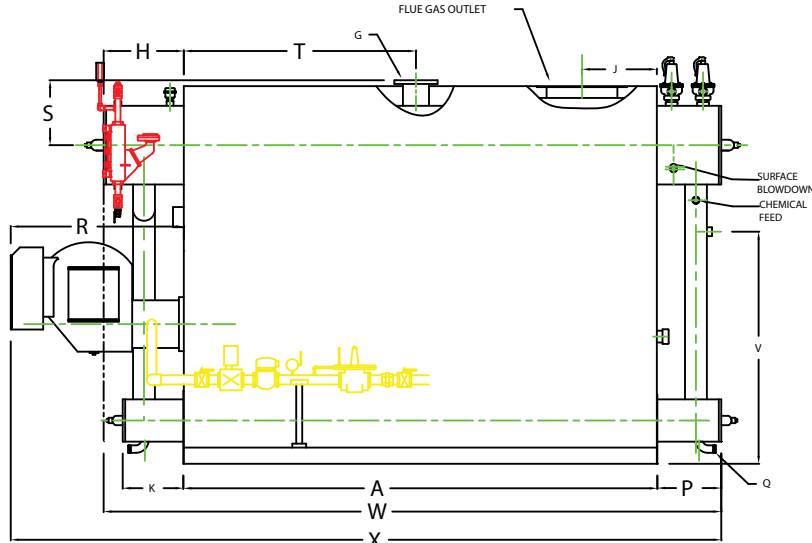


PLAN

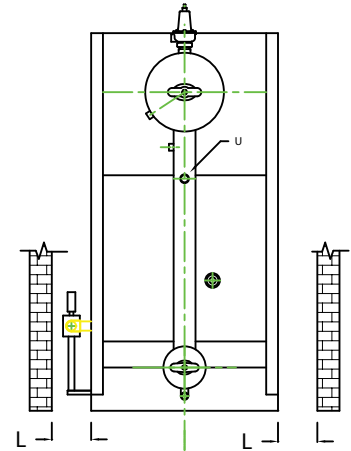
CHIMNEY FLANGE DIMS:
 O.D. = 23"
 I.D. = 18-1/4"
 B.C.D = 20-1/2"
 NO. OF HOLES = 8
 HOLE DIAMETER = 0.53"



FRONT VIEW



SIDE VIEW



REAR VIEW

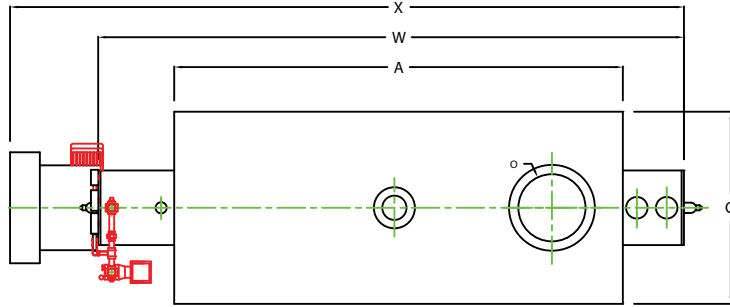
BOILER MODEL - ZF700LS	INCHES	METRIC
A. LENGTH OF BASE	120 1/2	3061
A1. LENGTH OF SUPPORT FROM BASE		
B. HEIGHT	95 13/16	2434
C. WIDTH OF BASE	47 1/2	1207
D. CTR. LOWER DRUM TO CTR. UPPER DRUM	70	1778
E. CENTER OF LOWER DRUM TO BOTTOM	10 13/16	275
F. CENTER OF BURNER OPENING TO BOTTOM	34 5/16	872
G. OUTLET FLANGE CLASS 150	6	152
H. DRUM CLEARANCE FROM TOP, FRONT	20 3/8	518
J. CENTER OF FLUE GAS OUTLET TO REAR	19	483
K. DRUM CLEARANCE FROM BASE, FRONT	15 9/32	388
L. TUBE REMOVAL CLEARANCE FROM BASE	30	762
M. UPPER DRUM, OD, NPS	20	508
N. LOWER DRUM, OD, NPS	10 3/4	273
O. FLUE GAS OUTLET, I.D.	18	457
P. DRUM CLEARANCE FROM BASE, REAR	16 1/8	410
Q. BLOWDOWN, NPT	1 1/2	38
R. BURNER DIMENSION	44	1118
S. CENTER OF TOP DRUM TO TOP OF OUTLET	16 1/2	419
T. CENTER OF OUTLET TO ENCLOSURE FRONT	59 3/16	1503
U. INLET, 3000 PSI ASA HALF COUPLING	1 1/2	38
V. FEEDWATER INLET FROM BASE	58 13/16	1486
W. OVERALL BOILER LENGTH	157	3988
X. OVERALL BOILER LENGTH W/ BURNER	180 5/8	4588

NOTE: DIMENSIONS SUBJECT TO CHANGE WITHOUT NOTICE
 CONSULT FACTORY FOR CERTIFIED DIMENSIONS.

NOTE: "X" DIMENSION MAY VARY BASED ON BURNER

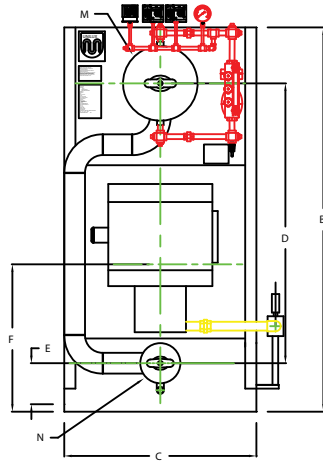
UNILUX ADVANCED MFG., LLC.	
30 COMMERCE PARK DRIVE NISKAYUNA, NY 12309 Ph: (518) 344-7490 Fax: (518) 344-7495	
<small>USER OPERATOR CHECKS A COPYRIGHTED PROPRIETARY DESIGN. ALL RIGHTS FOR REPRODUCTION, REUSE, REPRINTING OR PATENTS ARE RESERVED BY UNILUX ADVANCED MFG.</small>	
PROJECT:	-
LOCATION:	-
Model Sizes:	ZF 700LS
BURNER:	-
ELECTRIC:	-
SUPPLY PSI:	-
Drawn By:	RIZ RACAZA
Checked By:	DAVID RAMSON
Drawing No.:	DB000000
File No.:	JB000000
Date:	03AUG09
Date:	03AUG09
Scale:	NTS
REV:	0

ZF0800LS

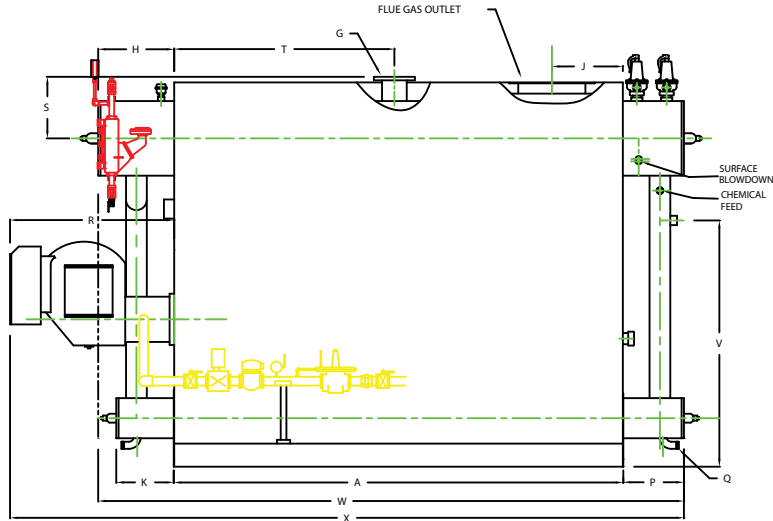


PLAN

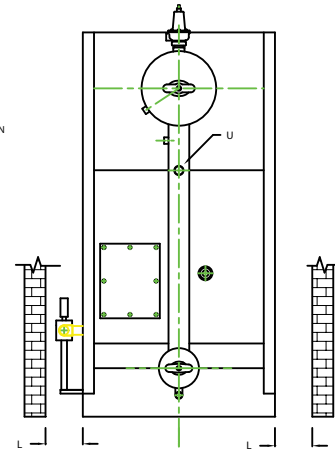
CHIMNEY FLANGE DIMS:
 O.D. = 23"
 I.D. = 18-1/4"
 B.C.D = 20-1/2"
 NO. OF HOLES = 8
 HOLE DIAMETER = 0.53"



FRONT VIEW



SIDE VIEW



REAR VIEW

	BOILER MODEL - ZF0800LS	INCHES	METRIC
A	LENGTH OF BASE	120 5/8	3064
A1	LENGTH OF SUPPORT FROM BASE	-	-
B	HEIGHT	102 13/16	2611
C	WIDTH OF BASE	51 1/2	1308
D	CTR. LOWER DRUM TO CTR. UPPER DRUM	75	1905
E	CENTER OF LOWER DRUM TO BOTTOM	12 13/16	325
F	CENTER OF BURNER OPENING TO BOTTOM	38 5/16	973
G	OUTLET FLANGE CLASS 150	6	152
H	DRUM CLEARANCE FROM TOP, FRONT	20 3/8	518
J	CENTER OF FLUE GAS OUTLET TO REAR	19	483
K	DRUM CLEARANCE FROM BASE, FRONT	15 9/32	388
L	TUBE REMOVAL CLEARANCE FROM BASE	34	864
M	UPPER DRUM, OD, NPS	20	508
N	LOWER DRUM, OD, NPS	10 3/4	273
O	FLUE GAS OUTLET, I.D.	18	457
P	DRUM CLEARANCE FROM BASE, REAR	16 1/8	410
Q	BLOWDOWN, NPT	1 1/2	38
R	BURNER DIMENSION	44	1118
S	CENTER OF TOP DRUM TO TOP OF OUTLET	16 1/2	419
T	CENTER OF OUTLET TO ENCLOSURE FRONT	59 3/16	1503
U	INLET, 3000 PSI ASA HALF COUPLING	1 1/2	38
V	FEEDWATER INLET FROM BASE	65 13/16	1672
W	OVERALL BOILER LENGTH	157 1/8	3991
X	OVERALL BOILER LENGTH W/ BURNER	180 3/4	4591

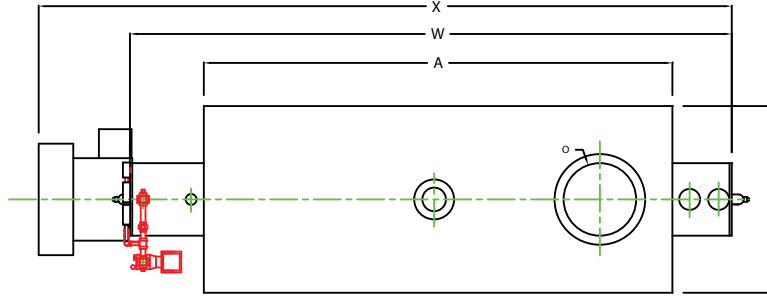
NOTE: "X" DIMENSION MAY VARY BASED ON BURNER

NOTE: DIMENSIONS SUBJECT TO CHANGE WITHOUT NOTICE
 CONSULT FACTORY FOR CERTIFIED DIMENSIONS.

UNILUX ADVANCED MFG., LLC.
 30 COMMERCE PARK DRIVE
 NISKAYUNA, NY 12309
 Ph: (518) 344-7490 Fax: (518) 344-7495

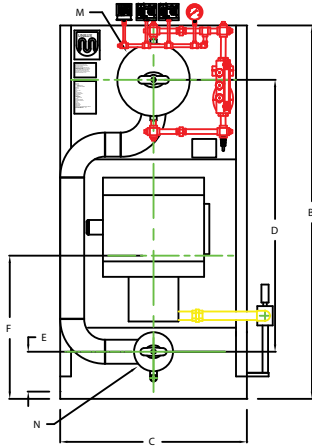
<small>THIS DRAWING EMPHATICALLY A CONFIDENTIAL, PROPRIETARY DESIGN. ALL RIGHTS FOR REPRODUCTION, MANUFACTURING OR PATENTS ARE RESERVED BY UNILUX BOILER CORP.</small>			
PROJECT:			
LOCATION:			
Model Sizes:	ZF 800LS		
BURNER:			
ELECT. TRIC:			
SUPPLY PSI:			
Drawn By:	RIZ RACAZA	Date:	05AUG09
Checked By:	DAVID RAMSON	Date:	05AUG09
Drawing No.:	CB000000	Scale:	NTS
File No.:	JB000000	REV:	0

ZF0900LS

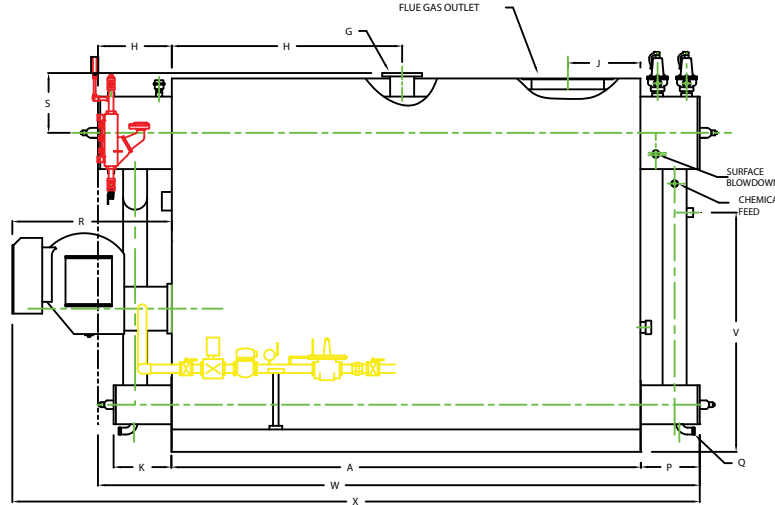


PLAN

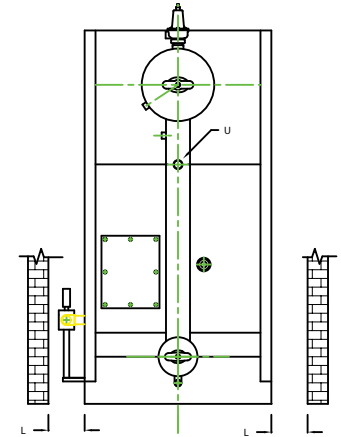
CHIMNEY FLANGE DIMS:
 O.D. = 25"
 I.D. = 20-1/4"
 B.C.D = 22-1/2"
 NO. OF HOLES = 8
 HOLE DIAMETER = 0.53"



FRONT VIEW



SIDE VIEW



REAR VIEW

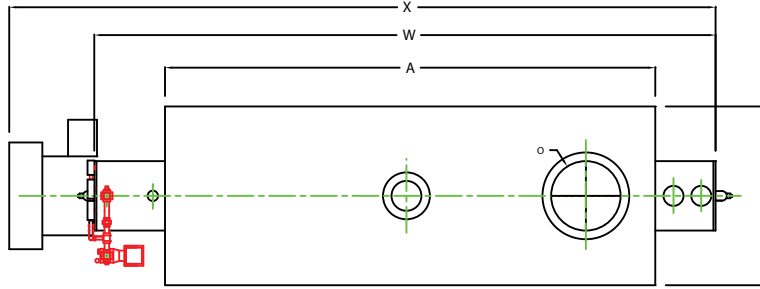
BOILER MODEL - ZF900LS	INCHES	METRIC
A. LENGTH OF BASE	129 5/8	3292
A1. LENGTH OF SUPPORT FROM BASE	-	-
B. HEIGHT	102 13/16	2611
C. WIDTH OF BASE	51 1/2	1308
D. CTRL. LOWER DRUM TO CTRL. UPPER DRUM	75	1905
E. CENTER OF LOWER DRUM TO BOTTOM	12 13/16	323
F. CENTER OF BURNER OPENING TO BOTTOM	38 5/16	973
G. OUTLET FLANGE CLASS 150	6	152
H. DRUM CLEARANCE FROM TOP, FRONT	20 3/8	518
J. CENTER OF FLUE GAS OUTLET TO REAR	20	508
K. DRUM CLEARANCE FROM BASE, FRONT	15 13/16	401
L. TUBE REMOVAL CLEARANCE FROM BASE	34	864
M. UPPER DRUM, OD, NPS	20	508
N. LOWER DRUM, OD, NPS	10 3/4	273
O. FLUE GAS OUTLET, I.D.	20	508
P. DRUM CLEARANCE FROM BASE, REAR	16 1/8	410
Q. BLOWDOWN, NPT	1 1/2	38
R. BURNER DIMENSION	44	1118
S. CENTER OF TOP DRUM TO TOP OF OUTLET	16 1/2	419
T. CENTER OF OUTLET TO ENCLOSURE FRONT	63 11/16	1618
U. INLET, 3000 PSI ASA HALF COUPLING	1 1/2	38
V. FEEDWATER INLET FROM BASE	65 13/16	1672
W. OVERALL BOILER LENGTH	166 1/8	4220
X. OVERALL BOILER LENGTH W/ BURNER	189 3/4	4820

NOTE: DIMENSIONS SUBJECT TO CHANGE WITHOUT NOTICE
 CONSULT FACTORY FOR CERTIFIED DIMENSIONS.

NOTE: "X" DIMENSION MAY VARY BASED ON BURNER

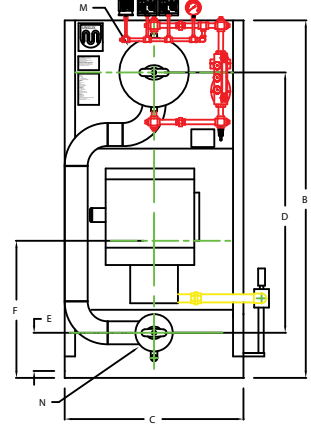
UNILUX ADVANCED MFG., LLC.	
30 COMMERCE PARK DRIVE NISKAYUNA, NY 12309 Ph: (518) 344-7490 Fax: (518) 344-7495	
<small>THIS DRAWING EMPLOYS A CONFIDENTIAL PROPRIETARY DESIGN. ALL RIGHTS FOR REPRODUCTION, MODIFICATION OR INVENTION ARE RESERVED BY UNILUX ADVANCED MFG.</small>	
PROJECT:	-
LOCATION:	-
Model Sizes:	ZF 900LS
BURNER:	-
ELECTRIC:	-
SUPPLY PSI:	-
Drawn By:	RIZ RACAIZA Date: 05AUG09
Checked By:	DAVID RAMSON Date: 05AUG09
Drawing No.:	0800000 Scale: NTS
File No.:	J8000000 REV: 0

ZF1000LS

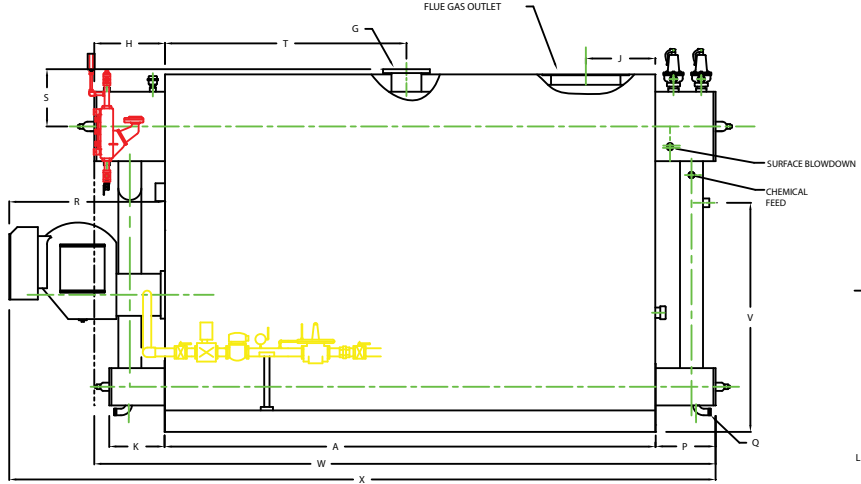


PLAN

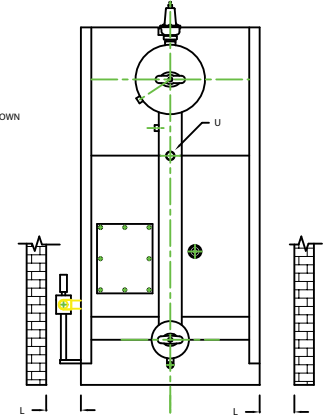
CHIMNEY FLANGE DIMS:
 O.D. = 25"
 I.D. = 20-1/4"
 B.C.D = 22-1/2"
 NO. OF HOLES = 8
 HOLE DIAMETER = 0.53"



FRONT VIEW



SIDE VIEW



REAR VIEW

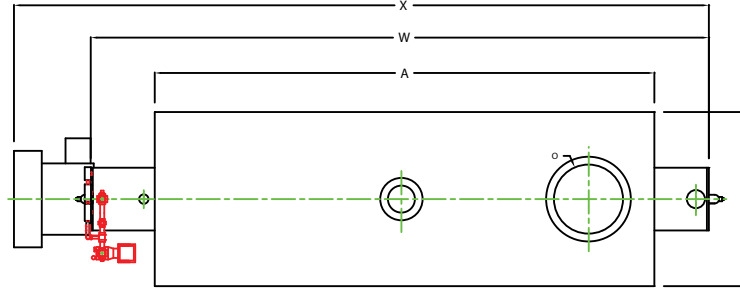
NOTE: DIMENSIONS SUBJECT TO CHANGE WITHOUT NOTICE
 CONTACT FACTORY FOR CERTIFIED DIMENSIONS.

BOILER MODEL - ZF1000LS	INCHES	METRIC
A LENGTH OF BASE	141 5/8	3598
A1 LENGTH OF SUPPORT FROM BASE	-	-
B HEIGHT	102 13/16	2611
C WIDTH OF BASE	51 1/2	1308
D CTR. LOWER DRUM TO CTR. UPPER DRUM	75	1905
E CENTER OF LOWER DRUM TO BOTTOM	12 13/16	325
F CENTER OF BURNER OPENING TO BOTTOM	38 5/16	973
G OUTLET FLANGE CLASS 150	8	203
H DRUM CLEARANCE FROM TOP FRONT	20 3/8	518
J CENTER OF FLUE GAS OUTLET TO REAR	20	508
K DRUM CLEARANCE FROM BASE FRONT	15 13/16	401
L TUBE REMOVAL CLEARANCE FROM BASE	34	864
M UPPER DRUM, OD, NPS	20	508
N LOWER DRUM, OD, NPS	10 3/4	273
O FLUE GAS OUTLET I.D.	20	508
P DRUM CLEARANCE FROM BASE, REAR	17 1/8	435
Q BLOWDOWN, NPT	1 1/2	38
R BURNER DIMENSION	44 7/8	1140
S CENTER OF TOP DRUM TO TOP OF OUTLET	16 1/2	419
T CENTER OF OUTLET TO ENCLOSURE FRONT	69 11/16	1770
U INLET 3000 PSI ASA HALF COUPLING	2	51
V FEEDWATER INLET FROM BASE	65 13/16	1672
W OVERALL BOILER LENGTH	179 1/8	4550
X OVERALL BOILER LENGTH W/ BURNER	203 5/8	5172

NOTE: "X" DIMENSION MAY VARY BASED ON BURNER

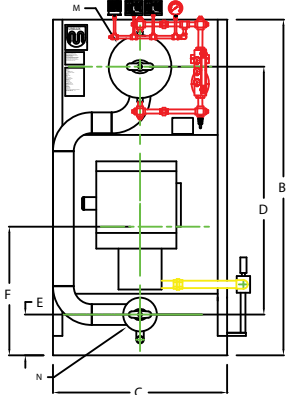
	UNILUX ADVANCED MFG., LLC. 80 COMMERCE PARK DRIVE NISKAYUNA, NY 12099 Ph: (518) 344-7490 Fax: (518) 344-7495		
	<small>THIS DRAWING CONVEYS A CONFIDENTIAL PROPRIETARY DESIGN. ALL RIGHTS FOR REPRODUCTION, MANUFACTURING OR PATENTS ARE RESERVED BY UNILUX ADVANCED MFG.</small>		
PROJECT:			
LOCATION:			
Model Size:	ZF 1000LS		
BURNER:			
ELECTRIC:			
SUPPLY P/S:			
Drawn By:	RIZ RACAZA	Date:	05AUG09
Checked By:	DAVID RAMSON	Date:	05AUG09
Drawing No.:	QB000000	Scale:	NTS
File No.:	JB000000	REV:	0

ZF1200LS

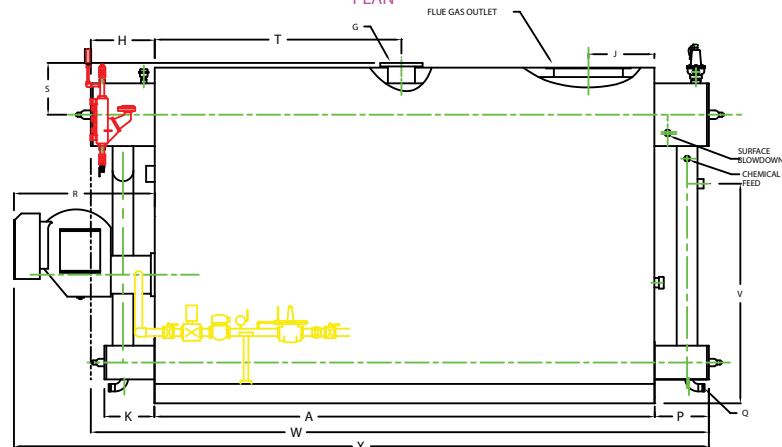


PLAN

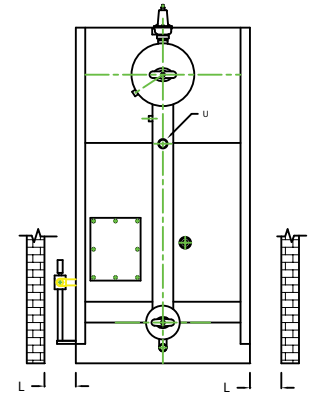
CHIMNEY FLANGE DIMS:
 O.D. = 27"
 I.D. = 22-1/4"
 R.C.D = 24-1/2"
 NO. OF HOLES = 8
 HOLE DIAMETER = 0.53"



FRONT VIEW



SIDE VIEW



REAR VIEW

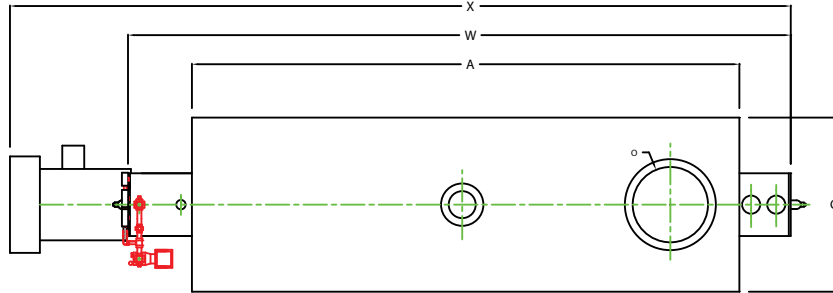
BOILER MODEL - ZF1200LS	INCHES	METRIC
A LENGTH OF BASE	159 7/8	4061
A1 LENGTH OF SUPPORT FROM BASE	-	-
B HEIGHT	106 13/16	2713
C WIDTH OF BASE	55 1/2	1410
D CTR. LOWER DRUM TO CTR. UPPER DRUM	79	2007
E CENTER OF LOWER DRUM TO BOTTOM	12 13/16	325
F CENTER OF BURNER OPENING TO BOTTOM	40 5/16	1024
G OUTLET FLANGE CLASS 150	8	204
H DRUM CLEARANCE FROM TOP FRONT	20 3/8	518
J CENTER OF FLUE GAS OUTLET TO REAR	21	533
K DRUM CLEARANCE FROM BASE FRONT	15 13/16	401
L TUBE REMOVAL CLEARANCE FROM BASE	38	965
M UPPER DRUM O.D. NPS	20	508
N LOWER DRUM O.D. NPS	10 3/4	273
O FLUE GAS OUTLET I.D.	22	559
P DRUM CLEARANCE FROM BASE REAR	17 1/8	435
Q BLOWDOWN NPT	2	51
R BURNER DIMENSION	44 7/8	1140
S CENTER OF TOP DRUM TO TOP OF OUTLET	16 1/2	419
T CENTER OF OUTLET TO ENCLOSURE FRONT	78 3/4	2000
U INLET, 5000 PSI ASA HALF COUPLING	2	51
V FEEDWATER INLET FROM BASE	69 13/16	1773
W OVERALL BOILER LENGTH	197 3/8	5013
X OVERALL BOILER LENGTH W/ BURNER	221 7/8	5636

NOTE: "X" DIMENSION MAY VARY BASED ON BURNER

NOTE: DIMENSIONS SUBJECT TO CHANGE WITHOUT NOTICE
 CONSULT FACTORY FOR CERTIFIED DIMENSIONS.

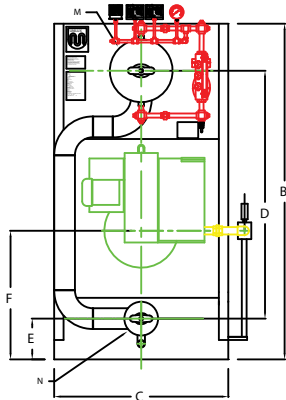
	UNILUX ADVANCED MFG., LLC. 30 COMMERCIAL PARK DRIVE NISKAYUNA, NY 12120 PH: (518) 344-7490 Fax: (518) 344-7495	
	<small>THIS DRAWING REPRESENTS A CONCEPTUAL DESIGN. UNILUX ASSUMES NO LIABILITY FOR MANUFACTURE, INSTALLATION OR PERFORMANCE OF THIS DRAWING OR THE EQUIPMENT IT REPRESENTS.</small>	
PROJECT:		
LOCATION:		
Model Size: ZF 1200LS		
BURNER:		
ELECTRIC:		
SUPPLY PSI:		
Drawn By:	RIZ BAKAZA	Date: 05AUG09
Checked By:	DWID RAMSON	Date: 05AUG09
Drawing No.:	0800000	Scale: NTS
File No.:	JB00000	REV: 0

ZF1400LS

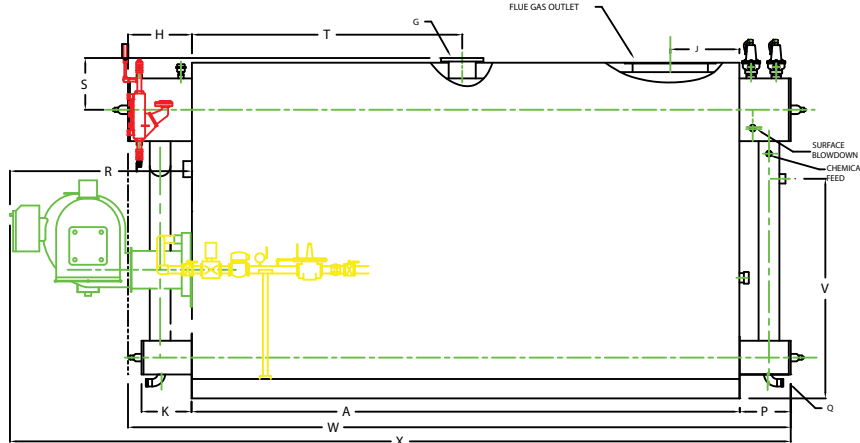


PLAN

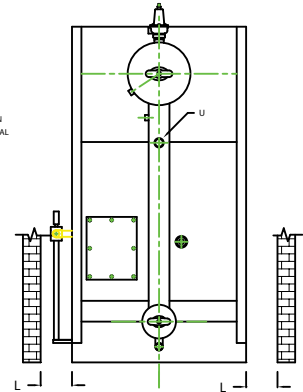
CHIMNEY FLANGE DIMS:
 O.D. = 29"
 I.D. = 24-1/4"
 B.C.D = 26-1/2"
 NO. OF HOLES = 12
 HOLE DIAMETER = 0.53"



FRONT VIEW



SIDE VIEW



REAR VIEW

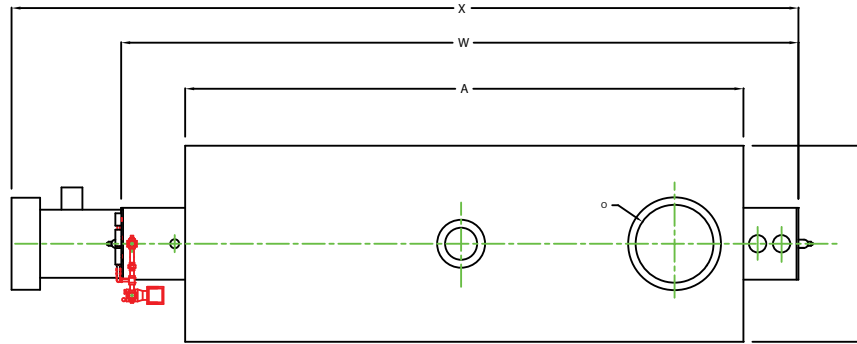
NOTE: DIMENSIONS SUBJECT TO CHANGE WITHOUT NOTICE
 CONSULT FACTORY FOR CERTIFIED DIMENSIONS.

BOILER MODEL - ZF1400LS	INCHES	METRIC
A LENGTH OF BASE	174 7/8	4442
A1 LENGTH OF SUPPORT FROM BASE	-	-
B HEIGHT	106 13/16	2713
C WIDTH OF BASE	55 1/2	1410
D CTR. LOWER DRUM TO CTR. UPPER DRUM	79	2007
E CENTER OF LOWER DRUM TO BOTTOM	12 13/16	325
F CENTER OF BURNER OPENING TO BOTTOM	40 5/16	1024
G OUTLET FLANGE CLASS 150	8	203
H DRUM CLEARANCE FROM TOP FRONT	20 3/8	518
J CENTER OF FLUE GAS OUTLET TO REAR	22	559
K L DRUM CLEARANCE FROM BASE FRONT	15 13/16	401
L TUBE REMOVAL CLEARANCE FROM BASE	38	965
M UPPER DRUM O.D. NPS	30	508
N LOWER DRUM O.D. NPS	10 3/4	273
O FLUE GAS OUTLET I.D.	24	610
P DRUM CLEARANCE FROM BASE REAR	16 1/8	410
Q BLOWDOWN NPT	2	51
R BURNER DIMENSION	5 5/8	1423
S CENTER OF TOP DRUM TO TOP OF OUTLET	16 1/2	419
T CENTER OF OUTLET TO ENCLOSURE FRONT	86 5/16	2192
U INLET 3000 PSI AKA HALF COUPLING	2	51
V FEEDWATER INLET FROM BASE	69 13/16	1773
W OVERALL BOILER LENGTH	211 3/8	5369
X OVERALL BOILER LENGTH/W/ BURNER	249	6325

NOTE: "X" DIMENSION MAY VARY BASED ON BURNER

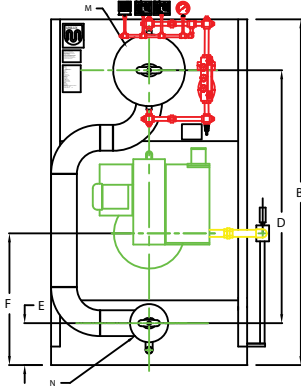
UNILUX ADVANCED MFG., LLC	
30 COMMERCE PARK DRIVE NISKAYUNA, NY 12309 Ph: (518) 344-7490 Fax: (518) 344-7495	
PROJECT: _____	
LOCATION: _____	
Model Size: ZF 1400LS	
BURNER: _____	
ELECTRIC: _____	
SUPPLY PSI: _____	
Drawn By: RZ RACAZA	Date: 08AUG09
Checked By: DAVID RAMSON	Date: 08AUG09
Checked No: Q000000	Scale: N/A
File No: JB000000	REV: 0

ZF1800LS

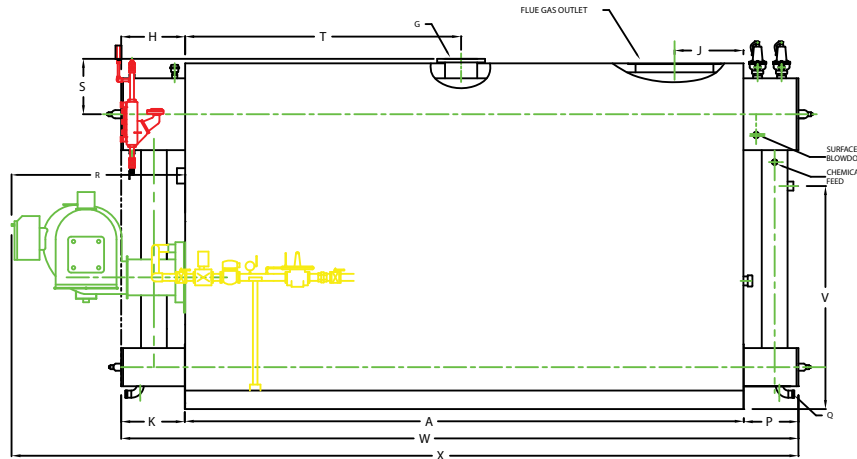


PLAN

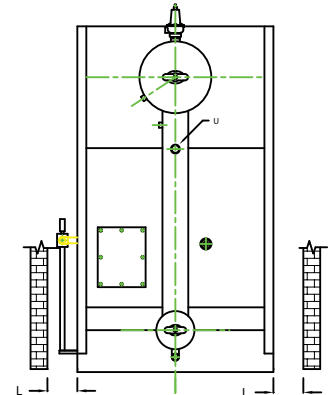
CHIMNEY FLANGE DIMS:
 O.D. = 31"
 I.D. = 26-1/4"
 B.C.D = 28-1/2"
 NO. OF HOLES = 12
 HOLE DIAMETER = 0.53"



FRONT VIEW



SIDE VIEW



REAR VIEW

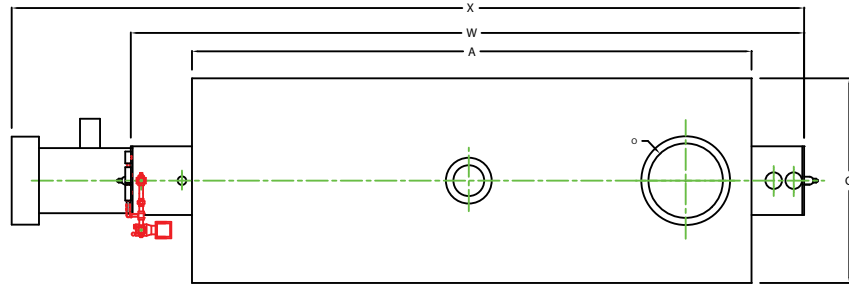
NOTE: DIMENSIONS SUBJECT TO CHANGE WITHOUT NOTICE
 CONSULT FACTORY FOR CERTIFIED DIMENSIONS.

BOILER MODEL - ZF1800LS	INCHES	METRIC
A LENGTH OF BASE	1386 7/8	4747
A1 LENGTH OF SUPPORT FROM BASE	-	-
B HEIGHT	1715 5/16	2929
C WIDTH OF BASE	65 1/2	1664
D CTR. LOWER DRUM TO CTR. UPPER DRUM	84 1/2	2146
E CENTER OF LOWER DRUM TO BOTTOM	43 13/16	351
F CENTER OF BURNER OPENING TO BOTTOM	42 5/8	1089
G OUTLET FLANGE CLASS 150	10	254
H DRUM CLEARANCE FROM TOP FRONT	21 7/8	556
J CENTER OF FLUE GAS OUTLET TO REAR	33	848
K DRUM CLEARANCE FROM BASE FRONT	21 1/8	537
L TUBE REMOVAL CLEARANCE FROM BASE	48	1219
M UPPER DRUM O.D. NPS	24	610
N LOWER DRUM O.D. NPS	12 3/4	326
O FLUE GAS OUTLET I.D.	26	660
P DRUM CLEARANCE FROM BASE REAR	18 1/8	460
Q BLOWDOWN NPT	2	51
R BURNER DIMENSION	58	1473
S CENTER OF TOP DRUM TO TOP OF OUTLET	18 1/2	470
T CENTER OF OUTLET TO ENCLOSURE FRONT	92 5/16	2345
U INLET 3000 PPS ASA HALF COUPLING	2 1/2	64
V FEEDWATER INLET FROM BASE	74 5/16	1888
W OVERALL BOILER LENGTH	226 7/8	5783
X OVERALL BOILER LENGTH W/ BURNER	363	6680

NOTE: "X" DIMENSION MAY VARY BASED ON BURNER

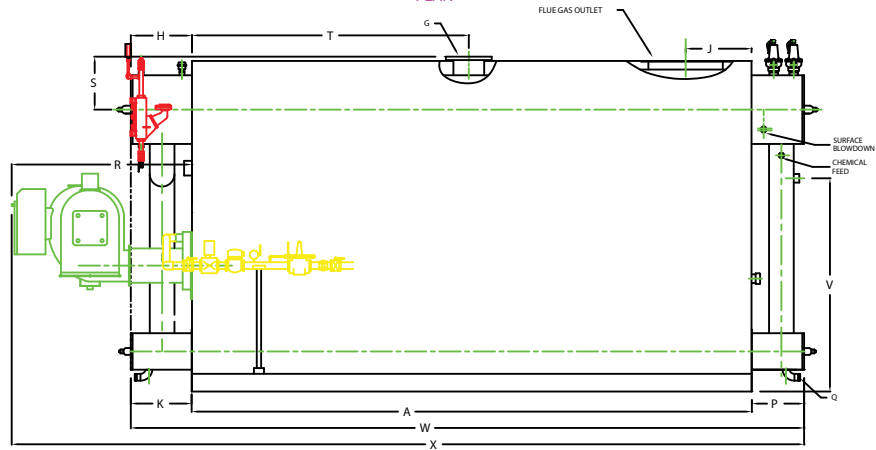
LINFLUX ADVANCED MFG., LLC. 30 COMMERCE PARK DRIVE NIKAUVANA, NY 12309 PH: (518) 344-7450 FAX: (518) 344-7495	
<small>THIS DRAWING, SPECIFICATIONS, AND DIMENSIONS ARE THE PROPERTY OF LINFLUX ADVANCED MFG., LLC. NO PARTS OF THIS DRAWING OR SPECIFICATIONS MAY BE REPRODUCED OR TRANSMITTED IN ANY FORM OR BY ANY MEANS, ELECTRONIC OR MECHANICAL, WITHOUT PERMISSION IN WRITING FROM LINFLUX ADVANCED MFG., LLC.</small>	
PROJECT:	
LOCATION:	
MOBILE STATE:	ZF1800LS
BURNER:	
ELEC TRC:	
DRAWN BY:	DS KACAZA Date: 05/ALG09
CHECKED BY:	DAVID RAMSDELL Date: 05/ALG09
DRAWING NO.:	38000000 Scale: NTS
FILE NO.:	18000000 REV: 1

ZF2000LS

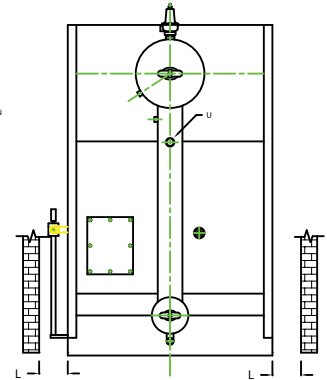


CHIMNEY FLANGE DIMS:
 O.D. = 31"
 I.D. = 26-1/4"
 B.C.D. = 28-1/2"
 NO. OF HOLES = 12
 HOLE DIAMETER = 0.53"

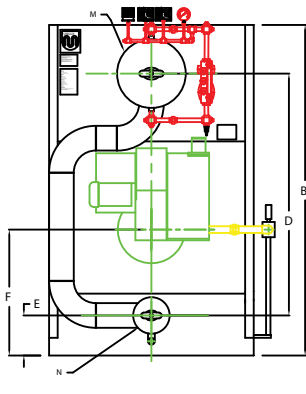
PLAN



SIDE VIEW



REAR VIEW




FRONT VIEW

NOTE: DIMENSIONS SUBJECT TO CHANGE WITHOUT NOTICE
 CONSULT FACTORY FOR CERTIFIED DIMENSIONS.

BOILER MODEL - ZF2000LS	INCHES	METRIC
A. LENGTH OF BASE	195 7/8	4975
A1. LENGTH OF SUPPORT FROM BASE	1	25.4
B. HEIGHT	115 5/16	2929
C. WIDTH OF BASE	71 1/2	1816
D. CTR. LOWER DRUM TO CTR. UPPER DRUM	64 1/2	1640
E. CENTER OF LOWER DRUM TO BOTTOM	13 13/16	351
F. CENTER OF BURNER OPENING TO BOTTOM	42 5/8	1083
G. OUTLET FLANGE CLASS 150	19	486
H. DRUM CLEARANCE FROM TOP FRONT	21 7/8	556
I. CENTER OF FLUE GAS OUTLET TO REAR	22	560
J. DRUM CLEARANCE FROM BASE FRONT	23 1/8	593
K. TUBE REMOVAL CLEARANCE FROM BASE	54	1372
M. UPPER DRUM O.D. NPS	24	610
N. LOWER DRUM O.D. NPS	12 3/4	324
O. FLUE GAS OUTLET I.D.	26	660
P. DRUM CLEARANCE FROM BASE REAR	18 1/8	460
Q. BLOWDOWN NPT	2	51
R. BURNER DIMENSION	63	1168
S. CENTER OF TOP DRUM TO TOP OF OUTLET	16 3/4	420
T. CENTER OF OUTLET TO ENCLOSURE FRONT	95 7/8	2440
U. INLET, 3000 PSI ASA HALF COUPLING	2 1/2	64
V. HEATER/WATER INLET FROM BASE	74 5/16	1890
W. OVERALL BOILER LENGTH	235 7/8	5991
X. OVERALL BOILER LENGTH W/ BURNER	277	7036

NOTE: "X" DIMENSION MAY VARY BASED ON BURNER

 UNILUX ADVANCED MFG., LLC. 30 COMMERCE PARK DRIVE NEWAYAMA, NJ 12309 PH: (518) 344-7490 FAX: (518) 344-7495	
PROJECT #:	
LOCATION:	
Model Name:	ZF-2000LS
BURNER:	
ITEM NO.:	
Drawn By:	107.646.422 Date: 05/01/2020
Checked By:	05/01/2020 Date: 05/01/2020
Drawing No.:	08000000 Date: 07/20
File No.:	08000000 REV: 0