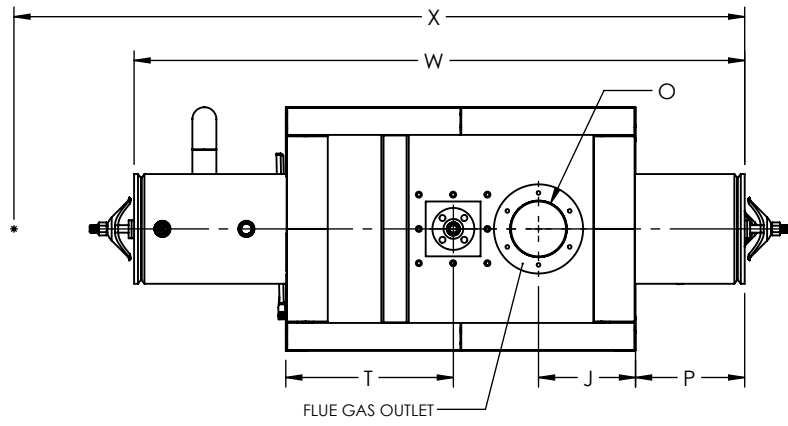


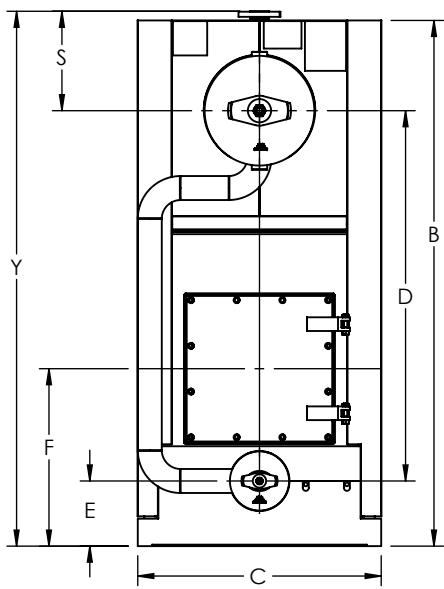
FLUE GAS OUTLET CONNECTION		
FLANGE DIMENSIONS	in	mm
O.D.	13.00	330
I.D.	8.25	210
B.C.D	10.50	267
HOLE DIAMETER	0.53	13
No. OF HOLES	6	



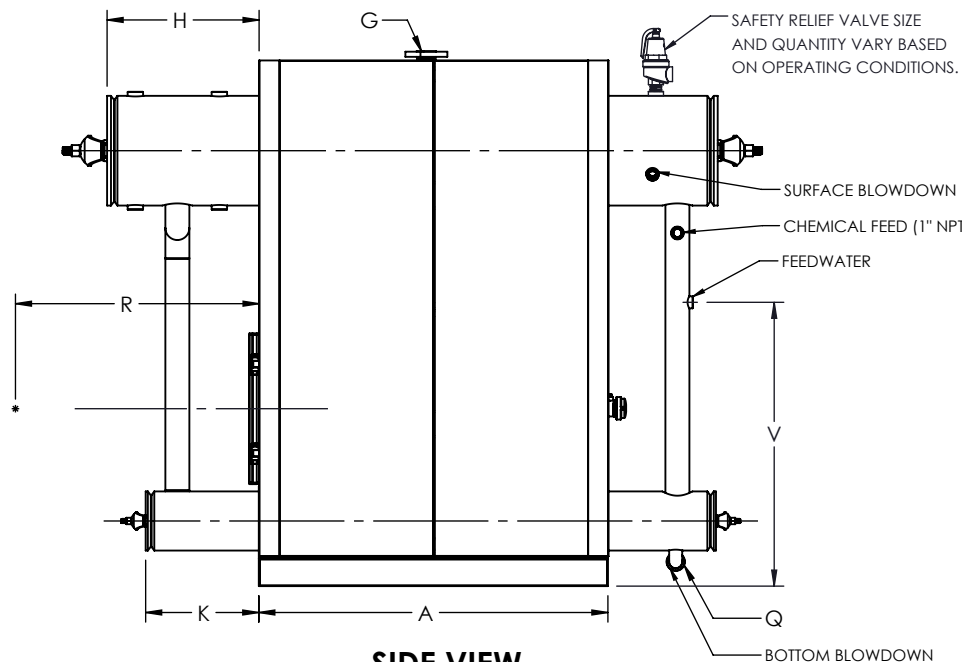
TOP VIEW

GENERAL DIMENSIONS		
	in	mm
A	BOILER BASE LENGTH	50.91 1293
B	BOILER HOUSING HEIGHT	76.66 1947
C	BOILER BASE WIDTH	35.50 902
D	CENTER OF BOTTOM DRUM TO CENTER OF TOP DRUM	54.00 1372
E	CENTER OF BOTTOM DRUM TO BOTTOM	9.50 241
F	CENTER OF BURNER OPENING TO BOTTOM	25.88 657
G	STEAM OUTLET, FLANGE, CLASS 300 (NPS)	1.50 38
H	TOP DRUM CLEARANCE FROM FRONT	22.17 563
J	CENTER OF FLUE GAS OUTLET TO REAR	14.15 359
K	BOTTOM DRUM CLEARANCE FROM FRONT	16.50 419
L	TUBE REMOVAL CLEARANCE FROM BASE	19.00 483
M	UPPER DRUM, O.D.	16.00 406
N	LOWER DRUM, O.D.	8.63 219
O	FLUE GAS OUTLET, I.D.	8.00 203
P	TOP DRUM CLEARANCE FROM REAR	15.92 404
Q	BOTTOM BLOWDOWN (NPT)	1.50 38
R	BURNER LENGTH	0.00
S	CENTER OF TOP DRUM TO TOP OF STEAM OUTLET	14.50 368
T	CENTER OF STEAM OUTLET TO FRONT	24.39 620
U	FEEDWATER INLET, COUPLING (NPT)	1.00 25
V	FEEDWATER ELEVATION FROM BOTTOM	41.50 1054
W	OVERALL BOILER LENGTH	89.05 2262
X	OVERALL BOILER LENGTH WITH BURNER	0.00
Y	OVERALL BOILER HEIGHT	78.00 1981

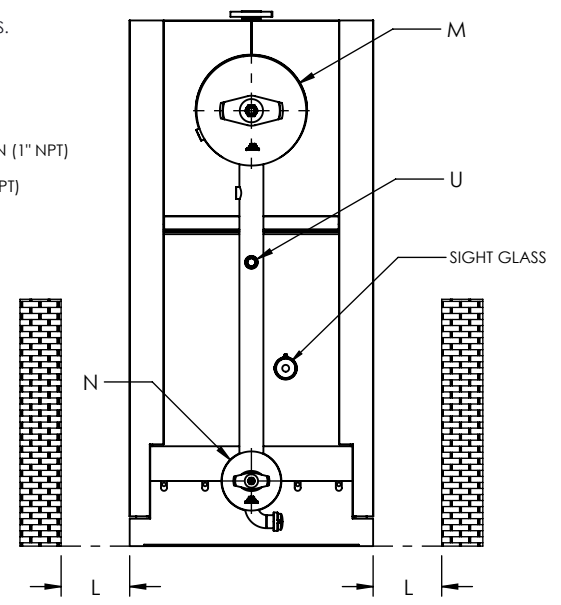
NOTE: DIMENSIONS SUBJECT TO CHANGE WITHOUT NOTICE. CONSULT FACTORY FOR CERTIFIED DIMENSIONS.



FRONT VIEW



SIDE VIEW



REAR VIEW

UNILUX ADVANCED MFG., LLC.
 30 COMMERCE PARK DRIVE
 NISKAYUNA, NY 12309
 Ph: (518) 344-7490



THIS DRAWING EMBODIES A CONFIDENTIAL PROPRIETARY DESIGN. ALL RIGHTS FOR REPRODUCTION, MANUFACTURING OR PATENTS ARE RESERVED BY UNILUX ADVANCED MANUFACTURING, LLC.			
Drawn By:	-	Date:	-
Checked By:	-	Date:	-
Drawing No.:	ZF 100HS-SUBMITTAL		
File No.:	QBXXX	REV.:	00

PROJECT:	-
LOCATION:	-
MODEL:	ZF 100HS
BURNER:	-
ELECTRIC:	-
SUPPLY PSI:	-

ZONE	REV.	DESCRIPTION	DATE
		REVISIONS	