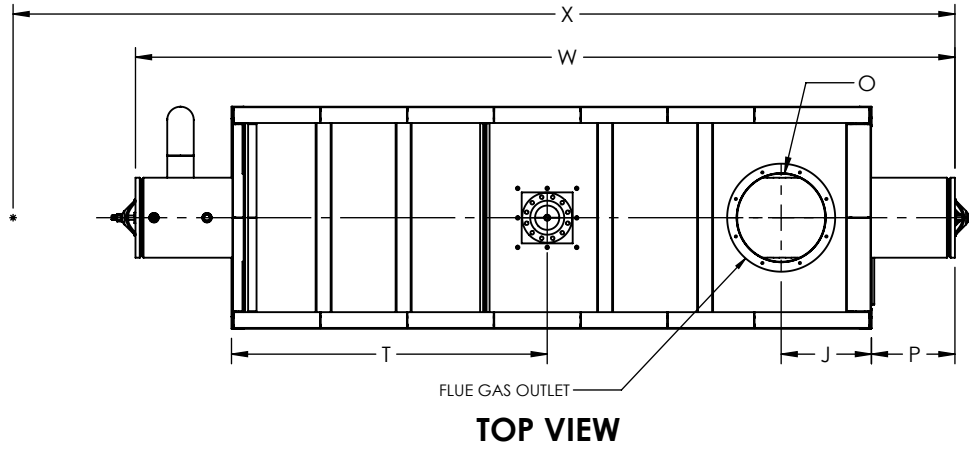
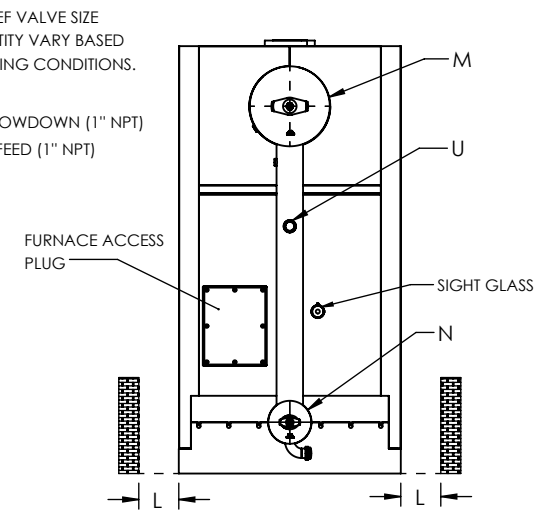
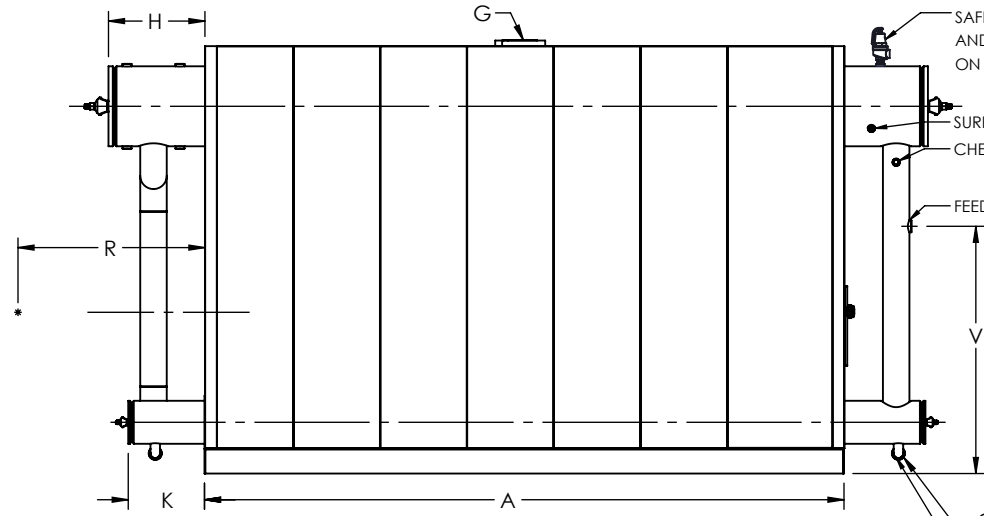
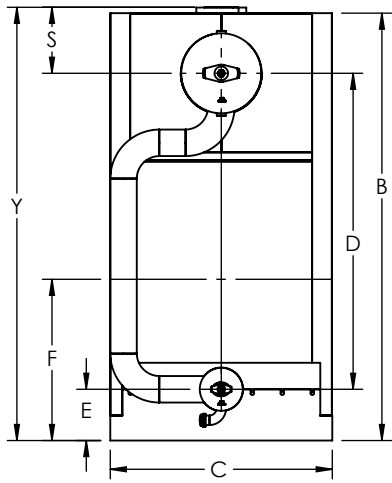


FLUE GAS OUTLET CONNECTION		
FLANGE DIMENSIONS	in	mm
O.D.	27.00	686
I.D.	22.25	565
B.C.D	24.50	622
HOLE DIAMETER	0.53	13
No. OF HOLES	8	



GENERAL DIMENSIONS		
	in	mm
A	159.88	4061
B	106.85	2714
C	55.50	1410
D	79.00	2007
E	12.81	325
F	40.31	1024
G	6.00	152
H	24.11	612
J	22.57	573
K	19.06	484
L	39.00	991
M	20.00	508
N	10.75	273
O	22.00	559
P	20.87	530
Q	2.00	51
R	0.00	
S	16.50	419
T	78.82	2002
U	2.00	51
V	61.81	1570
W	204.86	5203
X	0.00	
Y	108.31	2751

NOTE: DIMENSIONS SUBJECT TO CHANGE WITHOUT NOTICE. CONSULT FACTORY FOR CERTIFIED DIMENSIONS.



**UNILUX ADVANCED MFG., LLC.**  
 30 COMMERCE PARK DRIVE  
 NISKAYUNA, NY 12309  
 Ph: (518) 344-7490

THIS DRAWING EMBODIES A CONFIDENTIAL PROPRIETARY DESIGN. ALL RIGHTS FOR REPRODUCTION, MANUFACTURING OR PATENTS ARE RESERVED BY UNILUX ADVANCED MANUFACTURING, LLC.

Drawn By: -	Date: -
Checked By: -	Date: -
Drawing No. : ZF 1200HS-SUBMITTAL	
File No. : QBXXX	REV. : 00

PROJECT:	-
LOCATION:	-
MODEL:	ZF 1200HS
BURNER:	-
ELECTRIC:	-
SUPPLY PSI:	-

ZONE	REV.	DESCRIPTION	DATE
REVISIONS			