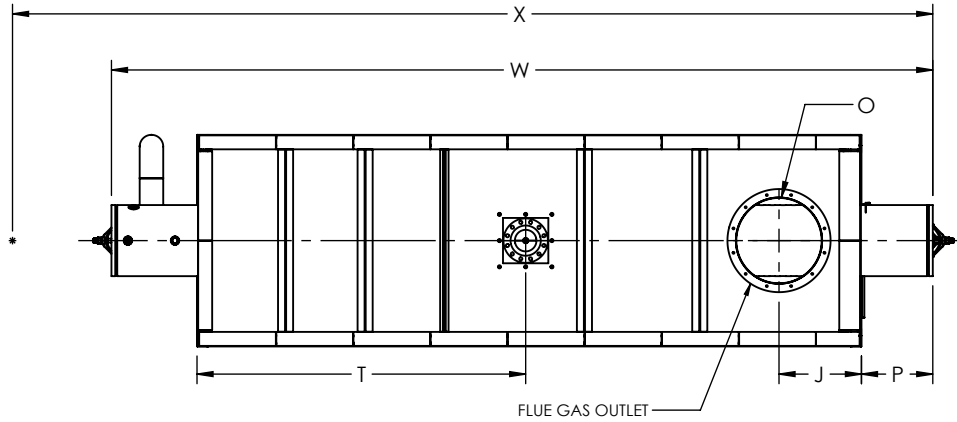


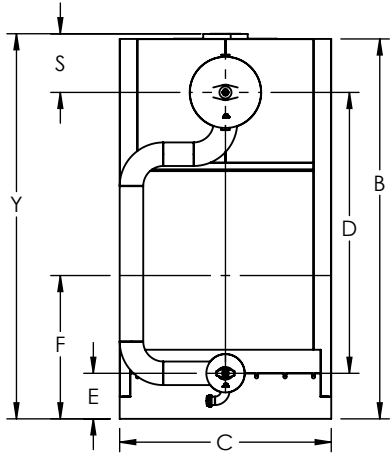
FLUE GAS OUTLET CONNECTION		
FLANGE DIMENSIONS	in	mm
O.D.	29.00	737
I.D.	24.25	616
B.C.D	26.50	673
HOLE DIAMETER	0.53	13
No. OF HOLES	12	



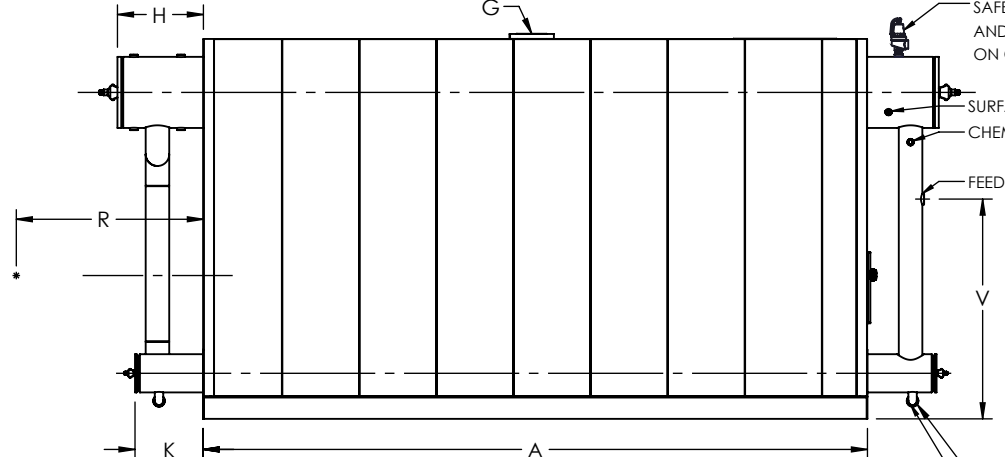
**TOP VIEW**

GENERAL DIMENSIONS		
	in	mm
A	186.88	4747
B	106.85	2714
C	59.50	1511
D	79.00	2007
E	12.81	325
F	40.31	1024
G	6.00	152
H	24.17	614
J	23.10	587
K	19.13	486
L	43.00	1092
M	20.00	508
N	10.75	273
O	24.00	610
P	20.15	512
Q	2.00	51
R	0.00	
S	16.50	419
T	92.33	2345
U	2.00	51
V	61.81	1570
W	231.00	5867
X	0.00	
Y	108.31	2751

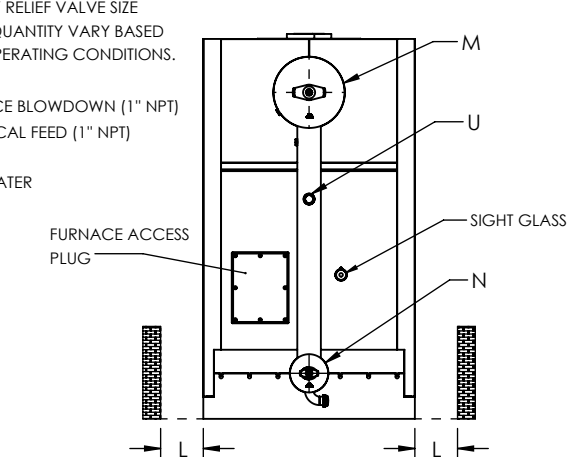
NOTE: DIMENSIONS SUBJECT TO CHANGE WITHOUT NOTICE. CONSULT FACTORY FOR CERTIFIED DIMENSIONS.



**FRONT VIEW**



**SIDE VIEW**



**REAR VIEW**

**UNILUX ADVANCED MFG., LLC.**  
 30 COMMERCE PARK DRIVE  
 NISKAYUNA, NY 12309  
 Ph: (518) 344-7490



THIS DRAWING EMBODIES A CONFIDENTIAL PROPRIETARY DESIGN. ALL RIGHTS FOR REPRODUCTION, MANUFACTURING OR PATENTS ARE RESERVED BY UNILUX ADVANCED MANUFACTURING, LLC.			
Drawn By:	-	Date:	-
Checked By:	-	Date:	-
Drawing No.:	ZF 1600HS-SUBMITTAL		
File No.:	QBXXX	REV.:	00

PROJECT:	-
LOCATION:	-
MODEL:	ZF 1600HS
BURNER:	-
ELECTRIC:	-
SUPPLY PSI:	-

ZONE	REV.	DESCRIPTION	DATE
REVISIONS			