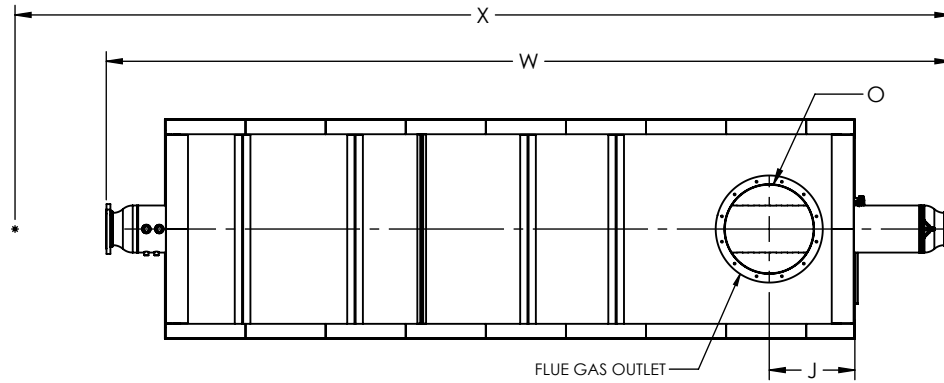


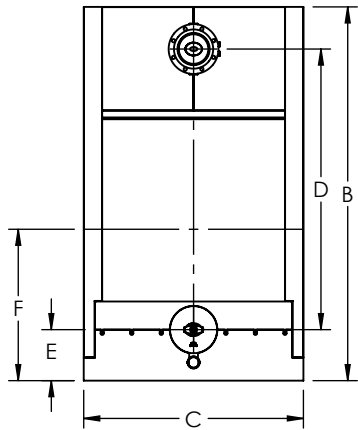
FLUE GAS OUTLET CONNECTION		
FLANGE DIMENSIONS	in	mm
O.D.	29.00	737
I.D.	24.25	616
B.C.D	26.50	673
HOLE DIAMETER	0.53	13
No. OF HOLES	12	



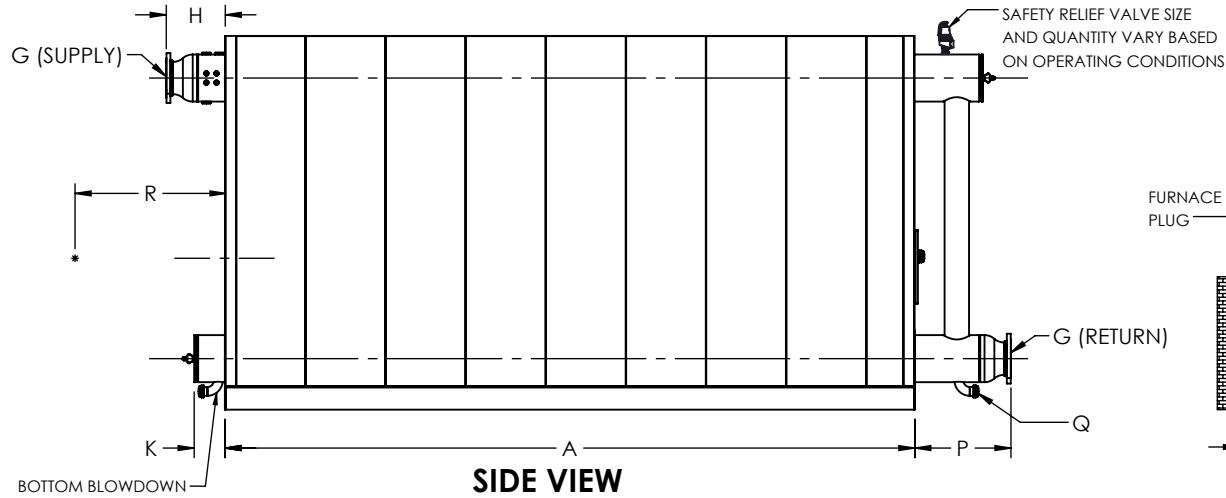
TOP VIEW

GENERAL DIMENSIONS		
	in	mm
A	186.88	4747
B	101.22	2571
C	59.50	1511
D	76.00	1930
E	13.81	351
F	41.00	1041
G	8.00	203
H	15.98	406
J	23.08	586
K	8.31	211
L	43.00	1092
M	12.75	324
N	12.75	324
O	24.00	610
P	26.03	661
Q	2.00	51
R	0.00	0
W	228.77	5811
X	0.00	0

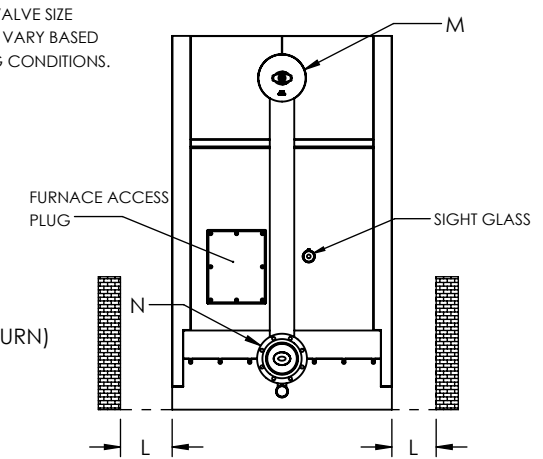
NOTE: DIMENSIONS SUBJECT TO CHANGE WITHOUT NOTICE. CONSULT FACTORY FOR CERTIFIED DIMENSIONS.



FRONT VIEW



SIDE VIEW



REAR VIEW

ZONE	REV.	DESCRIPTION	DATE
REVISIONS			

PROJECT:	-
LOCATION:	-
MODEL:	ZF 1600W
BURNER:	-
ELECTRIC:	-
SUPPLY PSI:	-

UNILUX ADVANCED MFG., LLC.

30 COMMERCE PARK DRIVE
NISKAYUNA, NY 12309
Ph: (518) 344-7490



THIS DRAWING EMBODIES A CONFIDENTIAL PROPRIETARY DESIGN. ALL RIGHTS FOR REPRODUCTION, MANUFACTURING OR PATENTS ARE RESERVED BY UNILUX ADVANCED MANUFACTURING, LLC.

Drawn By:	-	Date:	-
Checked By:	-	Date:	-
Drawing No.:	ZF 1600W-SUBMITTAL		
File No.:	QBXXX	REV.:	00