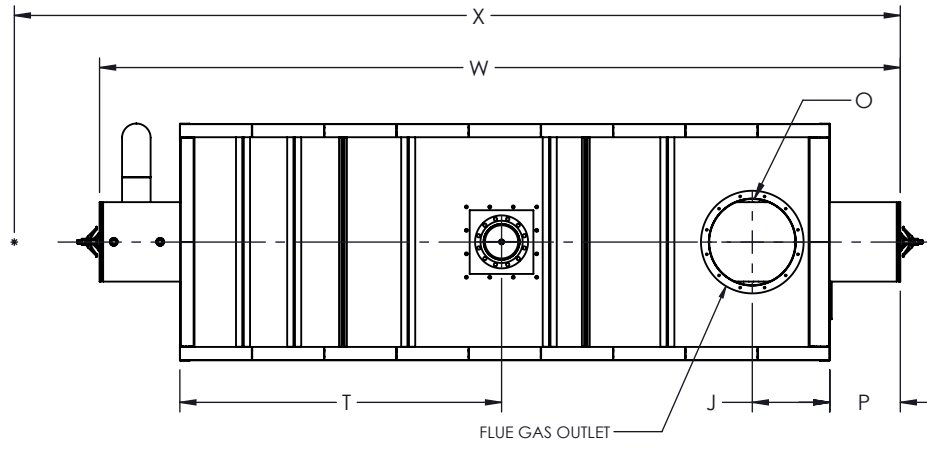


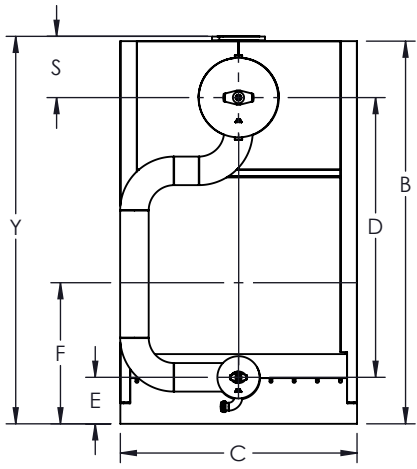
FLUE GAS OUTLET CONNECTION		
FLANGE DIMENSIONS	in	mm
O.D.	31.00	787
I.D.	26.25	667
B.C.D	28.50	724
HOLE DIAMETER	0.53	13
No. OF HOLES	12	



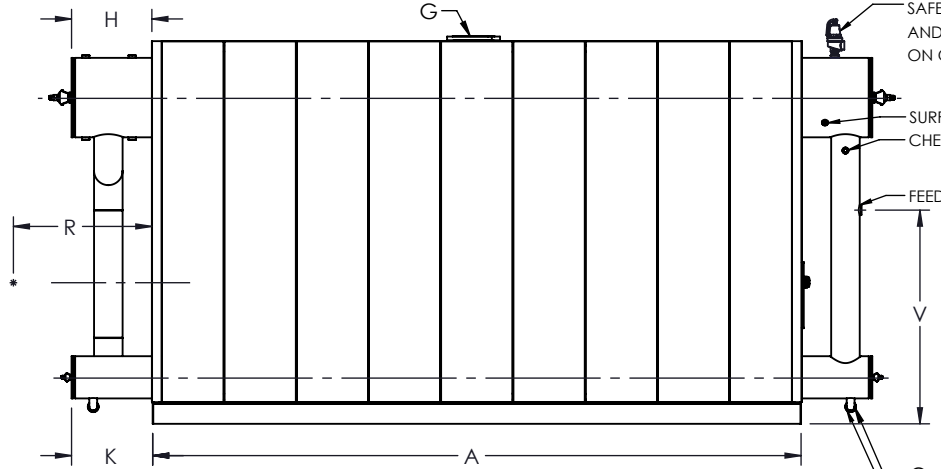
**TOP VIEW**

GENERAL DIMENSIONS		
	in	mm
A	195.88	4975
B	115.60	2936
C	71.50	1816
D	84.50	2146
E	13.81	351
F	42.63	1083
G	10.00	254
H	24.26	616
J	23.40	594
K	24.50	622
L	55.00	1397
M	24.00	610
N	12.75	324
O	26.00	660
P	21.30	541
Q	2.00	51
R	0.00	0.00
S	18.50	470
T	97.18	2468
U	2.00	51
V	64.31	1633
W	241.89	6144
X	0.00	0.00
Y	116.81	2967

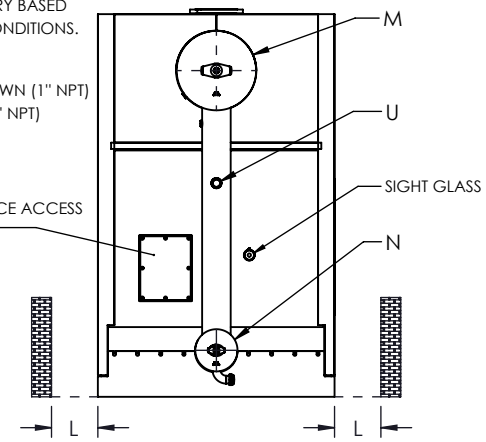
NOTE: DIMENSIONS SUBJECT TO CHANGE WITHOUT NOTICE. CONSULT FACTORY FOR CERTIFIED DIMENSIONS.



**FRONT VIEW**




**SIDE VIEW**



**REAR VIEW**

**UNILUX ADVANCED MFG., LLC.**  
 30 COMMERCE PARK DRIVE  
 NISKAYUNA, NY 12309  
 Ph: (518) 344-7490



THIS DRAWING EMBODIES A CONFIDENTIAL PROPRIETARY DESIGN. ALL RIGHTS FOR REPRODUCTION, MANUFACTURING OR PATENTS ARE RESERVED BY UNILUX ADVANCED MANUFACTURING, LLC.

Drawn By: -	Date: -
Checked By: -	Date: -
Drawing No. : ZF 2000LS-SUBMITTAL	
File No. : QBXXX	REV. : 00

PROJECT:	-
LOCATION:	-
MODEL:	ZF 2000LS
BURNER:	-
ELECTRIC:	-
SUPPLY PSI:	-

ZONE	REV.	DESCRIPTION	DATE
REVISIONS			