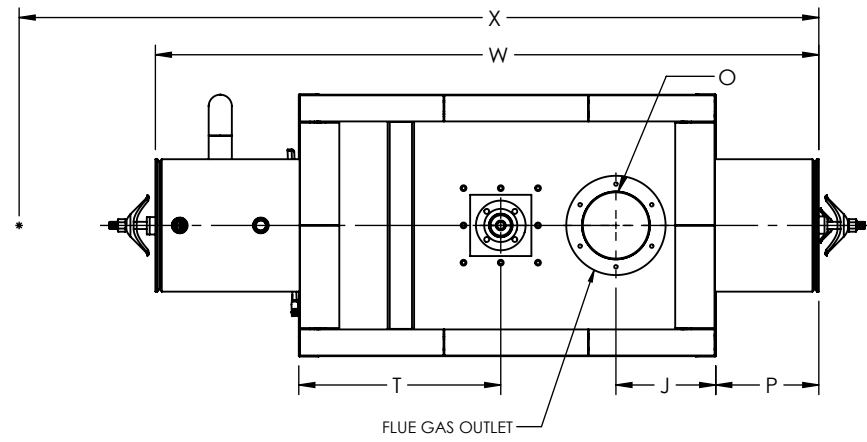


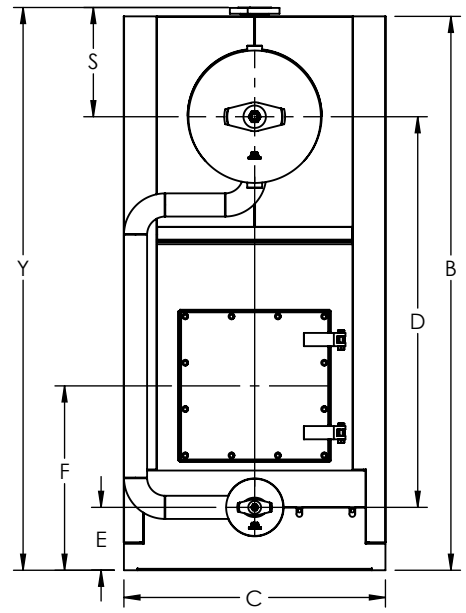
FLUE GAS OUTLET CONNECTION		
FLANGE DIMENSIONS	in	mm
O.D.	15.00	381
I.D.	10.25	260
B.C.D	12.50	318
HOLE DIAMETER	0.53	13
No. OF HOLES	6	



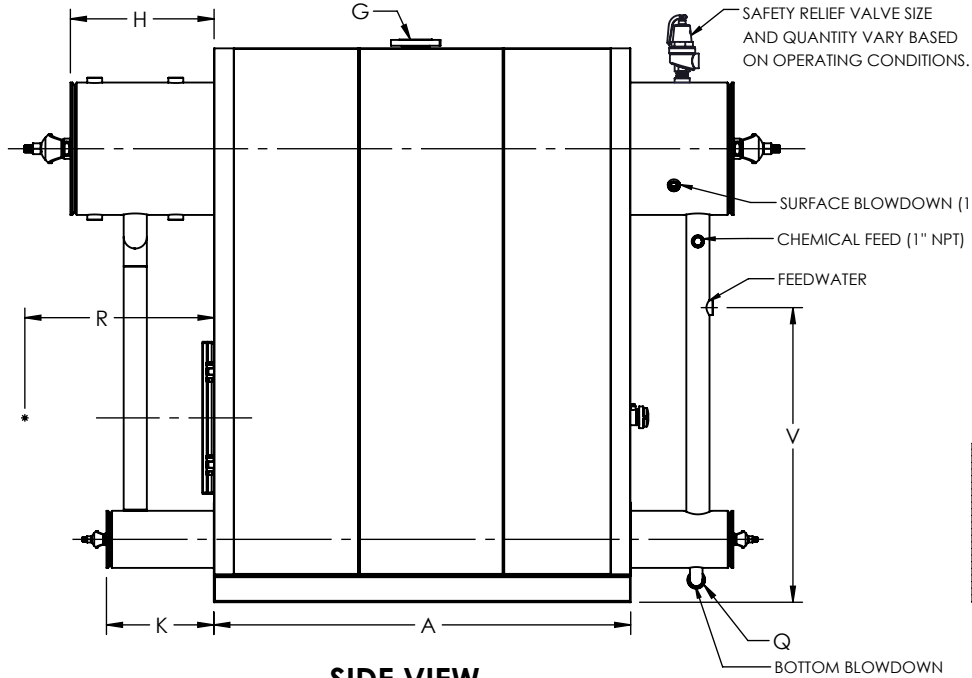
TOP VIEW

GENERAL DIMENSIONS		
	in	mm
A	62.97	1599
B	83.66	2125
C	39.50	1003
D	59.00	1499
E	9.50	241
F	27.85	707
G	3.00	76
H	21.70	551
J	15.03	382
K	16.21	412
L	23.00	584
M	20.00	508
N	8.63	219
O	10.00	254
P	15.62	397
Q	1.50	38
R	0.00	
S	16.50	419
T	30.46	774
U	1.25	32
V	44.50	1130
W	100.21	2545
X	0.00	
Y	85.00	2159

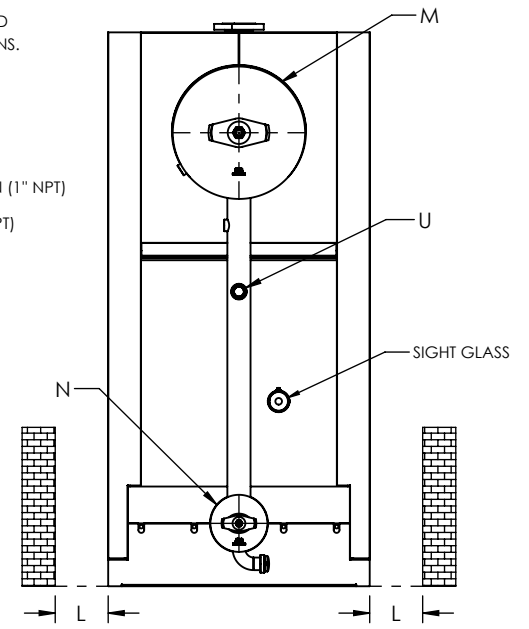
NOTE: DIMENSIONS SUBJECT TO CHANGE WITHOUT NOTICE. CONSULT FACTORY FOR CERTIFIED DIMENSIONS.



FRONT VIEW




SIDE VIEW



REAR VIEW

UNILUX ADVANCED MFG., LLC.
 30 COMMERCE PARK DRIVE
 NISKAYUNA, NY 12309
 Ph: (518) 344-7490



THIS DRAWING EMBODIES A CONFIDENTIAL PROPRIETARY DESIGN. ALL RIGHTS FOR REPRODUCTION, MANUFACTURING OR PATENTS ARE RESERVED BY UNILUX ADVANCED MANUFACTURING, LLC.

Drawn By: -	Date: -
Checked By: -	Date: -
Drawing No. : ZF 200LS-SUBMITTAL	
File No. : QBXXX	REV. : 00

PROJECT:	-
LOCATION:	-
MODEL:	ZF 200LS
BURNER:	-
ELECTRIC:	-
SUPPLY PSI:	-

ZONE	REV.	DESCRIPTION	DATE
		REVISIONS	