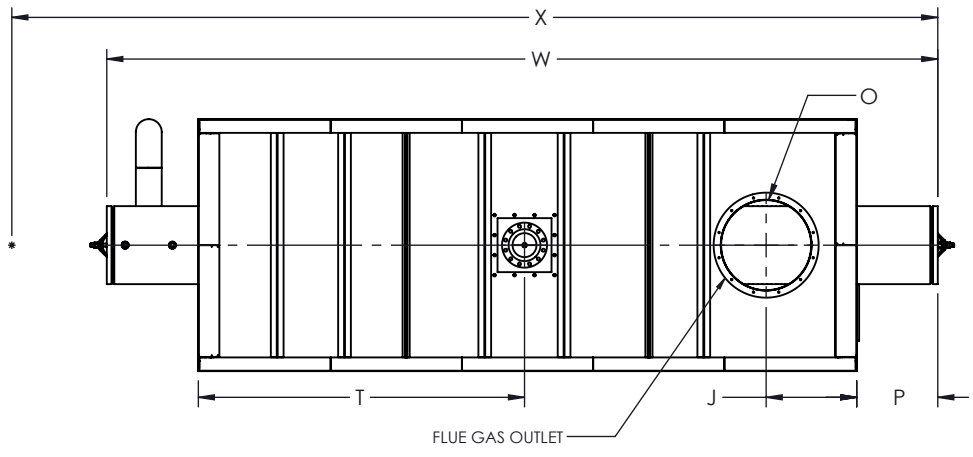


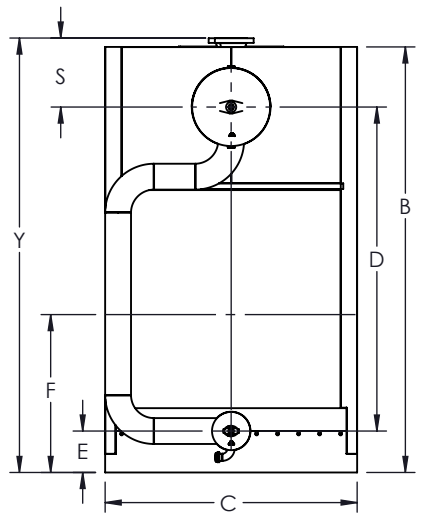
FLUE GAS OUTLET CONNECTION		
FLANGE DIMENSIONS	in	mm
O.D.	35.00	889
I.D.	30.25	768
B.C.D	32.50	826
HOLE DIAMETER	0.53	13
No. OF HOLES	12	



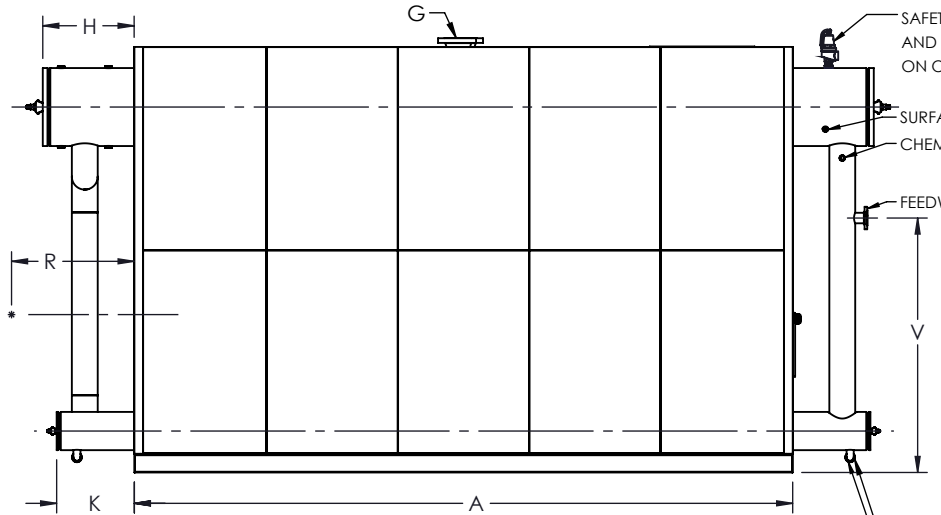
TOP VIEW

GENERAL DIMENSIONS		
	in	mm
A	219.44	5574
B	141.85	3603
C	84.00	2134
D	108.00	2743
E	13.81	351
F	52.38	1330
G	8.00	203
H	30.45	773
J	30.26	769
K	25.90	658
L	66.00	1676
M	26.00	660
N	12.75	324
O	30.00	762
P	26.95	685
Q	2.00	51
R	0.00	0.00
S	23.00	584
T	108.80	2763
U	3.00	76
V	84.81	2154
W	277.00	7036
X	0.00	0.00
Y	144.81	3678

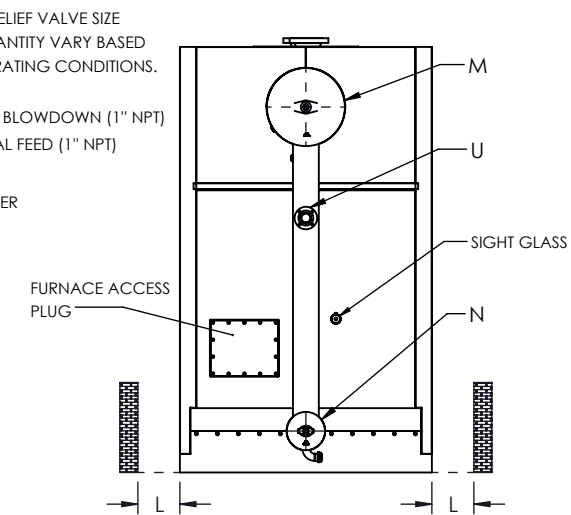
NOTE: DIMENSIONS SUBJECT TO CHANGE WITHOUT NOTICE. CONSULT FACTORY FOR CERTIFIED DIMENSIONS.



FRONT VIEW




SIDE VIEW



REAR VIEW

UNILUX ADVANCED MFG., LLC.
 30 COMMERCE PARK DRIVE
 NISKAYUNA, NY 12309
 Ph: (518) 344-7490



THIS DRAWING EMBODIES A CONFIDENTIAL PROPRIETARY DESIGN. ALL RIGHTS FOR REPRODUCTION, MANUFACTURING OR PATENTS ARE RESERVED BY UNILUX ADVANCED MANUFACTURING, LLC.

Drawn By:	-	Date:	-
Checked By:	-	Date:	-
Drawing No.:	ZF 2900HS-SUBMITTAL		
File No.:	QBXXX	REV.:	00

PROJECT:	-
LOCATION:	-
MODEL:	ZF 2900HS
BURNER:	-
ELECTRIC:	-
SUPPLY PSI:	-

ZONE	REV.	DESCRIPTION	DATE
REVISIONS			