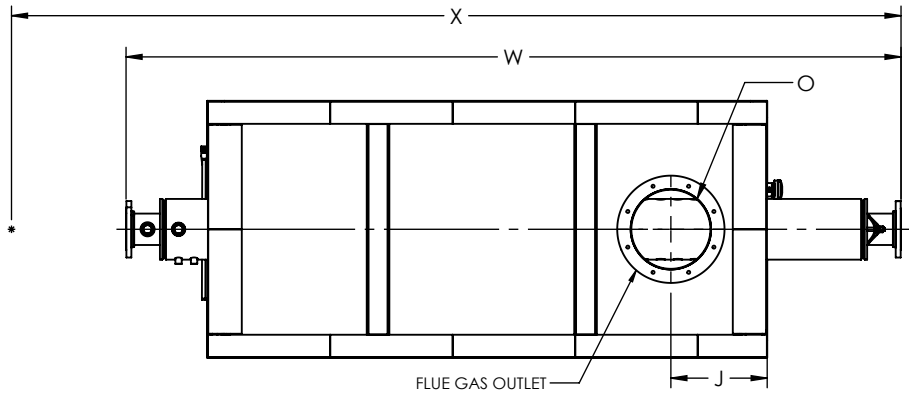


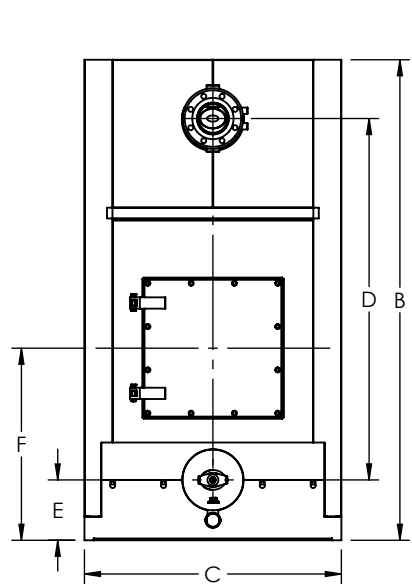
FLUE GAS OUTLET CONNECTION		
FLANGE DIMENSIONS	in	mm
O.D.	19.00	483
I.D.	14.25	362
B.C.D	16.50	419
HOLE DIAMETER	0.53	13
No. OF HOLES	8	



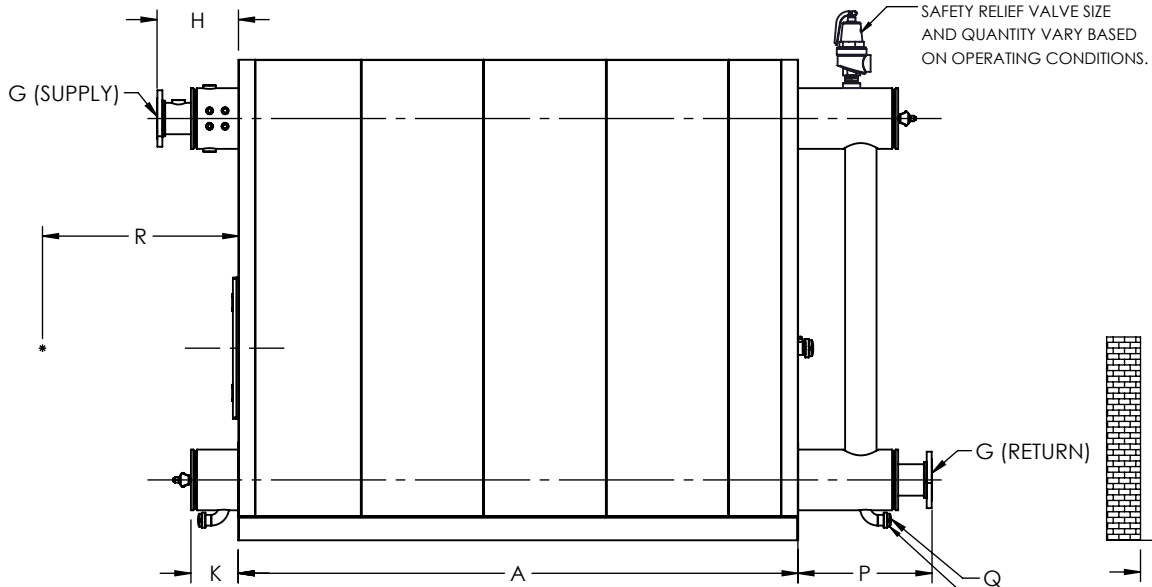
TOP VIEW

GENERAL DIMENSIONS		
	in	mm
A	BOILER BASE LENGTH	99.16 2519
B	OVERALL BOILER HEIGHT	85.09 2161
C	BOILER BASE WIDTH	45.50 1156
D	CENTER OF BOTTOM DRUM TO CENTER OF TOP DRUM	64.00 1626
E	CENTER OF BOTTOM DRUM TO BOTTOM	10.69 271
F	CENTER OF BURNER OPENING TO BOTTOM	34.02 864
G	SUPPLY/RETURN NOZZLE, FLANGE, CLASS 150 (NPS)	5.00 127
H	SUPPLY NOZZLE CLEARANCE FROM FRONT	14.42 366
J	CENTER OF FLUE GAS OUTLET TO REAR	17.04 433
K	BOTTOM DRUM CLEARANCE FROM FRONT	8.38 213
L	TUBE REMOVAL CLEARANCE FROM BASE	29.00 737
M	UPPER DRUM, O.D.	10.75 273
N	LOWER DRUM, O.D.	10.75 273
O	FLUE GAS OUTLET, I.D.	14.00 356
P	RETURN NOZZLE CLEARANCE FROM REAR	23.70 602
Q	BOTTOM BLOWDOWN (NPT)	1.50 38
R	BURNER LENGTH	0.00 0
W	OVERALL BOILER LENGTH	137.24 3486
X	OVERALL BOILER LENGTH WITH BURNER	0.00 0

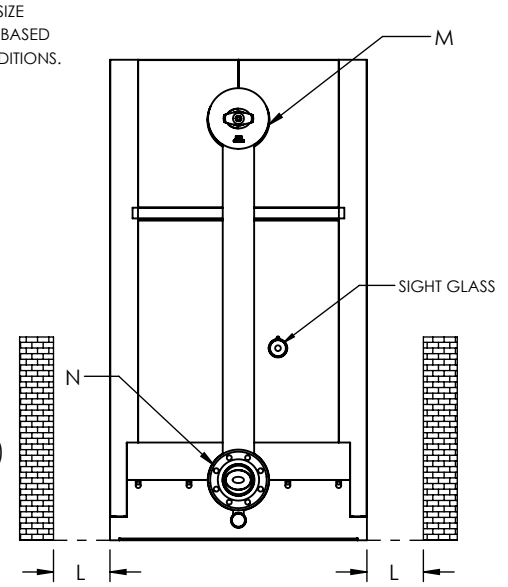
NOTE: DIMENSIONS SUBJECT TO CHANGE WITHOUT NOTICE. CONSULT FACTORY FOR CERTIFIED DIMENSIONS.



FRONT VIEW



SIDE VIEW




REAR VIEW

ZONE	REV.	DESCRIPTION	DATE
REVISIONS			

PROJECT:	-
LOCATION:	-
MODEL:	ZF 500W
BURNER:	-
ELECTRIC:	-
SUPPLY PSI:	-

UNILUX ADVANCED MFG., LLC.
 30 COMMERCE PARK DRIVE
 NISKAYUNA, NY 12309
 Ph: (518) 344-7490



THIS DRAWING EMBODIES A CONFIDENTIAL PROPRIETARY DESIGN. ALL RIGHTS FOR REPRODUCTION, MANUFACTURING OR PATENTS ARE RESERVED BY UNILUX ADVANCED MANUFACTURING, LLC.

Drawn By:	-	Date:	-
Checked By:	-	Date:	-
Drawing No.:	ZF 500W-SUBMITTAL		
File No.:	QBXXX	REV.:	00