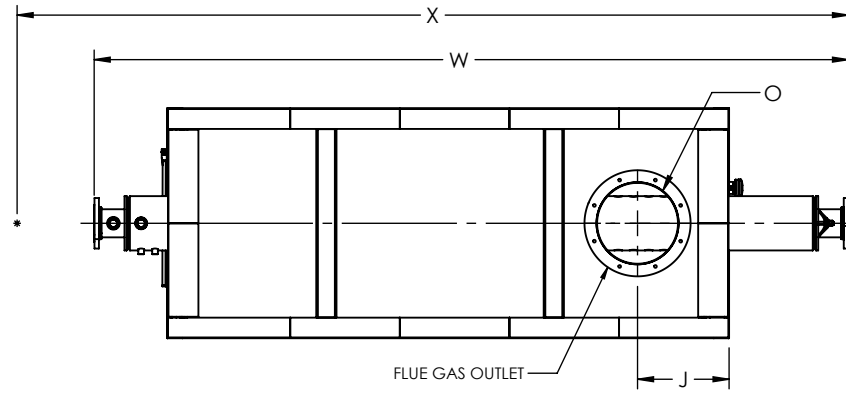


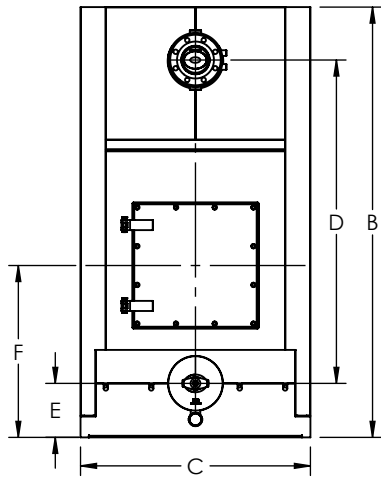
FLUE GAS OUTLET CONNECTION		
FLANGE DIMENSIONS	in	mm
O.D.	21.00	533
I.D.	16.25	413
B.C.D	18.50	470
HOLE DIAMETER	0.53	13
No. OF HOLES	8	



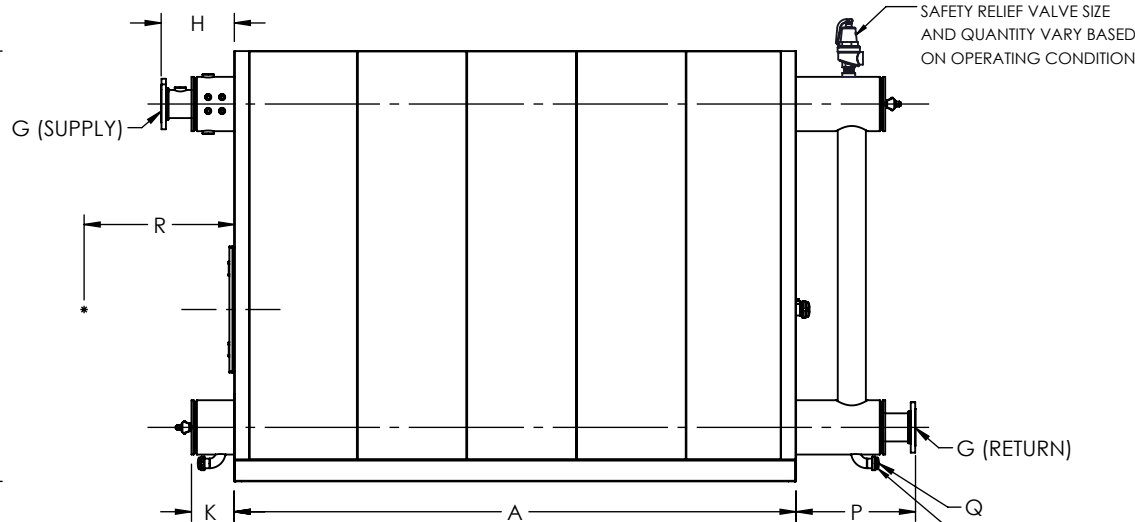
TOP VIEW

GENERAL DIMENSIONS		
	in	mm
A	111.22	2825
B	85.16	2163
C	45.50	1156
D	64.00	1626
E	10.69	271
F	34.02	864
G	5.00	127
H	14.48	368
J	18.08	459
K	8.44	214
L	29.00	737
M	10.75	273
N	10.75	273
O	16.00	406
P	23.64	600
Q	1.50	38
R	0.00	0
W	149.30	3792
X	0.00	0

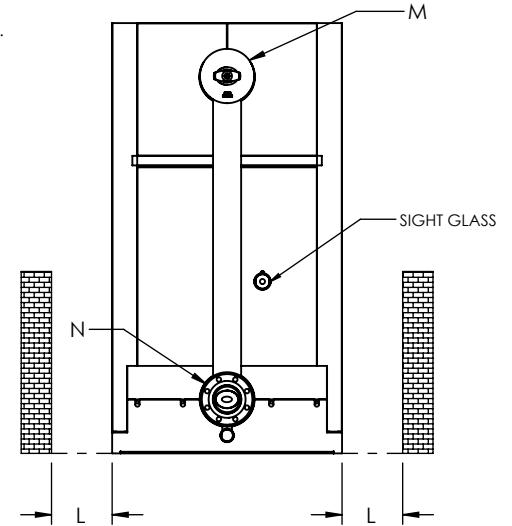
NOTE: DIMENSIONS SUBJECT TO CHANGE WITHOUT NOTICE. CONSULT FACTORY FOR CERTIFIED DIMENSIONS.



FRONT VIEW



SIDE VIEW



REAR VIEW

UNILUX ADVANCED MFG., LLC.

30 COMMERCE PARK DRIVE
NISKAYUNA, NY 12309
Ph: (518) 344-7490



THIS DRAWING EMBODIES A CONFIDENTIAL PROPRIETARY DESIGN. ALL RIGHTS FOR REPRODUCTION, MANUFACTURING OR PATENTS ARE RESERVED BY UNILUX ADVANCED MANUFACTURING, LLC.

Drawn By:	-	Date:	-
Checked By:	-	Date:	-
Drawing No.:	ZF 600W-SUBMITTAL		
File No.:	QBXXX	REV.:	00

PROJECT:	-
LOCATION:	-
MODEL:	ZF 600W
BURNER:	-
ELECTRIC:	-
SUPPLY PSI:	-

ZONE	REV.	DESCRIPTION	DATE
REVISIONS			