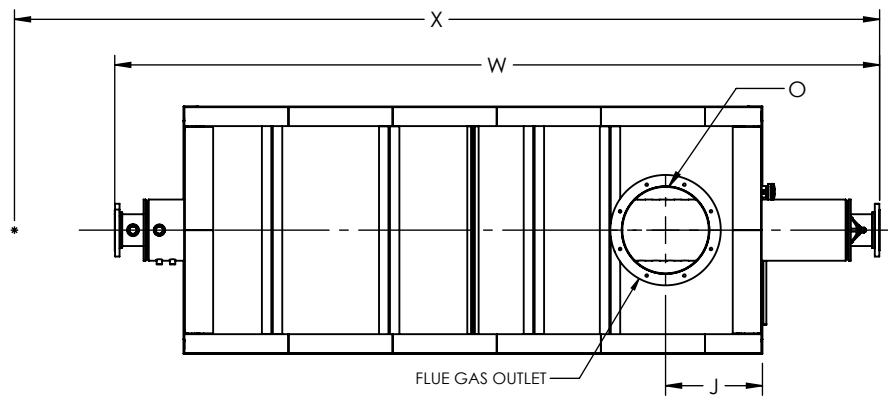


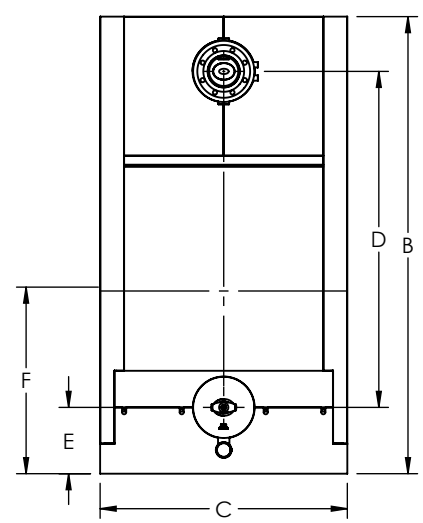
FLUE GAS OUTLET CONNECTION		
FLANGE DIMENSIONS	in	mm
O.D.	23.00	584
I.D.	18.25	464
B.C.D	20.50	521
HOLE DIAMETER	0.53	13
No. OF HOLES	8	



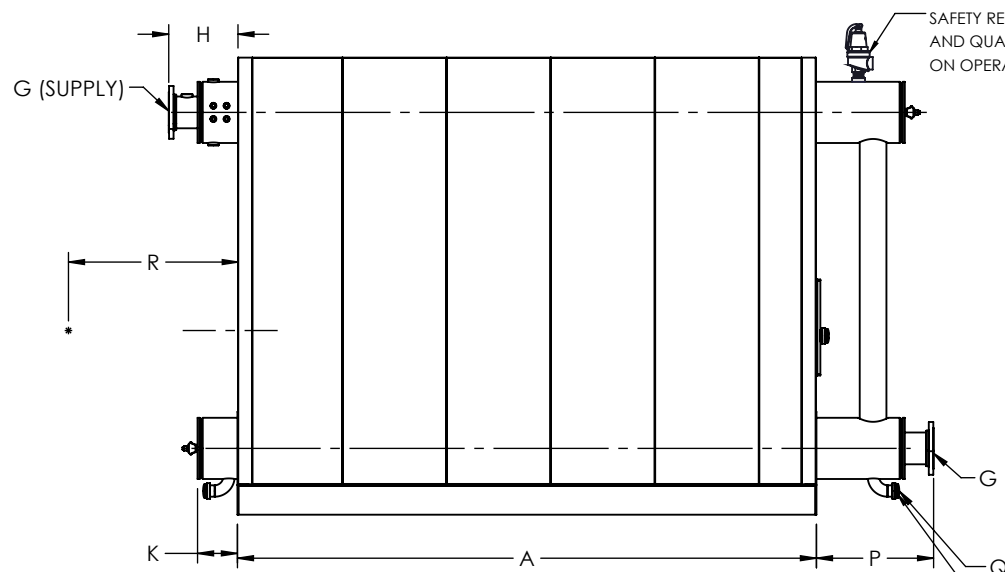
**TOP VIEW**

GENERAL DIMENSIONS		
	in	mm
A	120.63	3064
B	95.22	2419
C	51.50	1308
D	70.00	1778
E	13.81	351
F	39.50	1003
G	6.00	152
H	14.42	366
J	20.07	510
K	8.31	211
L	35.00	889
M	12.75	324
N	12.75	324
O	18.00	457
P	24.41	620
Q	2.00	51
R	0.00	0
W	159.35	4047
X	0.00	0

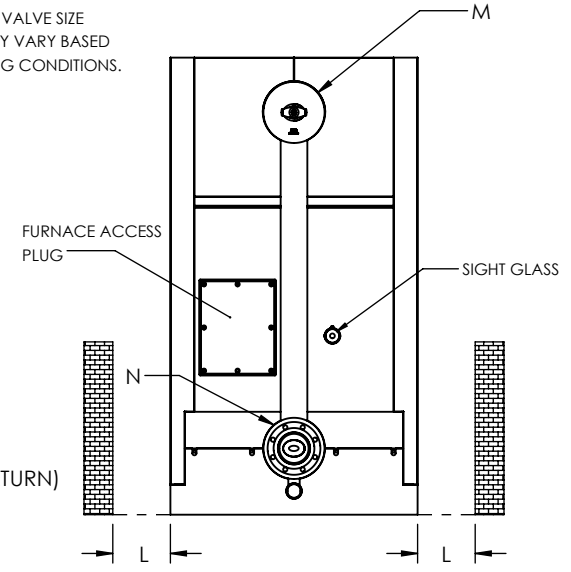
NOTE: DIMENSIONS SUBJECT TO CHANGE WITHOUT NOTICE. CONSULT FACTORY FOR CERTIFIED DIMENSIONS.



**FRONT VIEW**



**SIDE VIEW**



**REAR VIEW**

**UNILUX ADVANCED MFG., LLC.**  
 30 COMMERCE PARK DRIVE  
 NISKAYUNA, NY 12309  
 Ph: (518) 344-7490



THIS DRAWING EMBODIES A CONFIDENTIAL PROPRIETARY DESIGN. ALL RIGHTS FOR REPRODUCTION, MANUFACTURING OR PATENTS ARE RESERVED BY UNILUX ADVANCED MANUFACTURING, LLC.

PROJECT:	-
LOCATION:	-
MODEL:	ZF 800W
BURNER:	-
ELECTRIC:	-
SUPPLY PSI:	-

Drawn By:	-	Date:	-
Checked By:	-	Date:	-
Drawing No.:	ZF 800W-SUBMITTAL		
File No.:	QBXXX	REV.:	00

ZONE	REV.	DESCRIPTION	DATE
REVISIONS			